



## Rabbit Anti-SPECC1L antibody

SL7773R

<b>Product Name:</b>	SPECC1L
<b>Chinese Name:</b>	细胞质和纺锤体机化蛋白A抗体
<b>Alias:</b>	Cytokinesis and spindle organization A; Cytospin-A; CYTSA; CYTSA_HUMAN; Renal carcinoma antigen NY-REN-22; SPECC1-like protein; specc1l; Sperm antigen with calponin homology and coiled-coil domains 1-like.
<b>Organism Species:</b>	Rabbit
<b>Clonality:</b>	Polyclonal
<b>React Species:</b>	Human,Mouse,Rat,Chicken,Dog,Pig,Cow,Horse,Rabbit,Sheep,
<b>Applications:</b>	WB=1:500-2000ELISA=1:500-1000IHC-P=1:400-800IHC-F=1:400-800IF=1:100-500 (Paraffin sections need antigen repair) not yet tested in other applications. optimal dilutions/concentrations should be determined by the end user.
<b>Molecular weight:</b>	125kDa
<b>Cellular localization:</b>	cytoplasmicThe cell membrane
<b>Form:</b>	Lyophilized or Liquid
<b>Concentration:</b>	1mg/ml
<b>immunogen:</b>	KLH conjugated synthetic peptide derived from human SPECC1L:161-260/1117
<b>Lsotype:</b>	IgG
<b>Purification:</b>	affinity purified by Protein A
<b>Storage Buffer:</b>	0.01M TBS(pH7.4) with 1% BSA, 0.03% Proclin300 and 50% Glycerol.
<b>Storage:</b>	Store at -20 °C for one year. Avoid repeated freeze/thaw cycles. The lyophilized antibody is stable at room temperature for at least one month and for greater than a year when kept at -20°C. When reconstituted in sterile pH 7.4 0.01M PBS or diluent of antibody the antibody is stable for at least two weeks at 2-4 °C.
<b>PubMed:</b>	<a href="#">PubMed</a>
<b>Product Detail:</b>	This gene encodes a coiled-coil domain containing protein. The encoded protein may play a critical role in actin-cytoskeletal reorganization during facial morphogenesis. Mutations in this gene are a cause of oblique facial clefting-1. Alternatively spliced transcript variants encoding multiple isoforms have been observed for this gene. A read-through transcript composed of SPECC1L (sperm antigen with calponin homology and

coiled-coil domains 1-like) and the downstream ADORA2A (adenosine A2a receptor) gene sequence has been identified, but it is thought to be non-coding. [provided by RefSeq, Jun 2013]

**Function:**

Involved in cytokinesis and spindle organization. May play a role in actin cytoskeleton organization and microtubule stabilization and hence required for proper cell adhesion and migration.

**Subunit:**

May interact with both microtubules and actin cytoskeleton.

**Subcellular Location:**

Cytoplasm, cytoskeleton. Cytoplasm, cytoskeleton, spindle. Cell junction, gap junction. Note=Colocalizes with acetylated alpha-tubulin, gamma-tubulin and F-actin. Also observed in a ring around gamma-tubulin containing centrioles possibly in the microtubule organizing center.

**DISEASE:**

Defects in SPECC1L are the cause of facial clefting oblique type 1 (OBLFC1) [MIM:600251]. A rare form of facial clefting. A facial cleft is any of the fissures between the embryonic prominences that normally unite to form the face.

**Similarity:**

Belongs to the cytospin-A family.  
Contains 1 CH (calponin-homology) domain.

**SWISS:**

Q69YQ0

**Gene ID:**

23384

**Database links:**

[Entrez Gene: 23384](#) Human

[Entrez Gene: 74392](#) Mouse

[SwissProt: Q69YQ0](#) Human

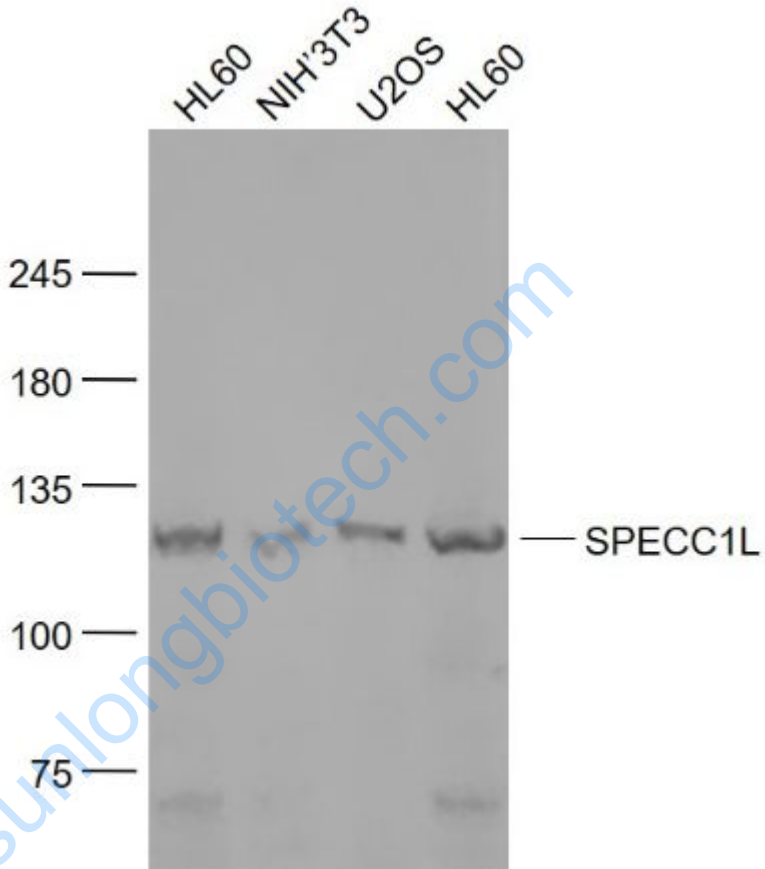
[SwissProt: Q2KN98](#) Mouse

[Unigene: 474384](#) Human

**Important Note:**

This product as supplied is intended for research use only, not for use in human, therapeutic or diagnostic applications.

**Picture:**



**Sample:**

HL60(Human) Cell Lysate at 30 ug

NIH/3T3(Mouse) Cell Lysate at 30 ug

U2OS(Human) Cell Lysate at 30 ug

HL60 (Human) Cell Lysate at 30 ug

Primary: Anti- SPECC1L (SL7773R) at 1/1000 dilution

Secondary: IRDye800CW Goat Anti-Rabbit IgG at 1/20000 dilution

Predicted band size: 125 kD

	Observed band size: 125 kD
--	----------------------------

[www.sunlongbiotech.com](http://www.sunlongbiotech.com)