



Rabbit Anti-CDC20B antibody

SL7783R

| | |
|-------------------------------|---|
| Product Name: | CDC20B |
| Chinese Name: | 细胞分裂周期蛋白20B抗体 |
| Alias: | CDC20 cell division cycle 20 homolog B; CDC20 like protein; CDC20B protein; cell division cycle 20 homolog B (S cerevisiae); G6VTS76519; CD20B_HUMAN. |
| Organism Species: | Rabbit |
| Clonality: | Polyclonal |
| React Species: | Human,Mouse,Rat,Pig,Horse, |
| Applications: | ELISA=1:500-1000IHC-P=1:400-800IHC-F=1:400-800IF=1:100-500 (Paraffin sections need antigen repair) not yet tested in other applications. optimal dilutions/concentrations should be determined by the end user. |
| Molecular weight: | 57kDa |
| Cellular localization: | The nucleuscytoplasmicThe cell membraneExtracellular matrixSecretory protein |
| Form: | Lyophilized or Liquid |
| Concentration: | 1mg/ml |
| immunogen: | KLH conjugated synthetic peptide derived from human CDC20B:441-519/519 |
| Lsotype: | IgG |
| Purification: | affinity purified by Protein A |
| Storage Buffer: | 0.01M TBS(pH7.4) with 1% BSA, 0.03% Proclin300 and 50% Glycerol. |
| Storage: | Store at -20 °C for one year. Avoid repeated freeze/thaw cycles. The lyophilized antibody is stable at room temperature for at least one month and for greater than a year when kept at -20°C. When reconstituted in sterile pH 7.4 0.01M PBS or diluent of antibody the antibody is stable for at least two weeks at 2-4 °C. |
| PubMed: | PubMed |
| Product Detail: | The timely destruction of key regulators through ubiquitin-mediated proteolysis ensures the orderly progression of the cell cycle. The APC (anaphase-promoting complex) is a major component of this degradation machinery and its activation is required for the execution of critical events. CDC20B has been implicated as a meiosis specific activator of APC and is required for sporulation in budding yeast. |

Similarity:

Belongs to the WD repeat CDC20/Fizzy family.
Contains 7 WD repeats.

SWISS:

Q86Y33

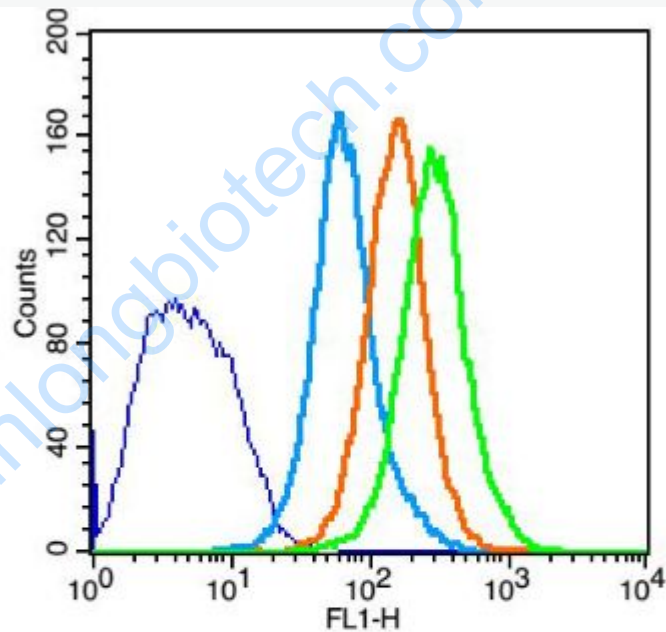
Gene ID:

166979

Important Note:

This product as supplied is intended for research use only, not for use in human, therapeutic or diagnostic applications.

Picture:



| Key | Name | Parameter |
|-----|---------------------------------|-----------|
| — | Raji-blank.043 | FL1-H |
| — | bs-0295G-FITC(B)-Raji-2.044 | FL1-H |
| — | bs-0295P(B)-(FITC)(B#1FADA2.051 | FL1-H |
| — | bs-7783R-(FITC)(B)-Raji-5.055 | FL1-H |

Positive control: Raji

Isotype Control Antibody: Rabbit IgG ; Secondary Antibody: Goat anti-rabbit IgG-

FITC, Dilution: 1:100 in 1 X PBS containing 0.5% BSA ; Primary Antibody

| | |
|--|--|
| | Dilution: 5 μ g in 100 μ L 1X PBS containing 0.5% BSA. |
|--|--|

www.sunlongbiotech.com