



Rabbit Anti-CDC45L antibody

SL7785R

Product Name:	CDC45L
Chinese Name:	细胞分裂周期调控蛋白45抗体
Alias:	CDC 45; CDC45; CDC 45L; CDC45 (cell division cycle 45, S.cerevisiae homolog) like; CDC45 cell division cycle 45 like; CDC45 like; CDC45 related protein; CDC45_HUMAN; CDC45L2; Cell division control protein 45 homolog; Cell division cycle 45 like 2; Cell division cycle 45 like; PORC PI 1; PORC-PI-1.
Organism Species:	Rabbit
Clonality:	Polyclonal
React Species:	Human,Mouse,Rat,Pig,Horse,
Applications:	ELISA=1:500-1000IHC-P=1:400-800IHC-F=1:400-800IF=1:100-500 (Paraffin sections need antigen repair) not yet tested in other applications. optimal dilutions/concentrations should be determined by the end user.
Molecular weight:	66kDa
Cellular localization:	The nucleuscytoplasmic
Form:	Lyophilized or Liquid
Concentration:	1mg/ml
immunogen:	KLH conjugated synthetic peptide derived from human CDC45L:485-566/566
Lsotype:	IgG
Purification:	affinity purified by Protein A
Storage Buffer:	0.01M TBS(pH7.4) with 1% BSA, 0.03% Proclin300 and 50% Glycerol.
Storage:	Store at -20 °C for one year. Avoid repeated freeze/thaw cycles. The lyophilized antibody is stable at room temperature for at least one month and for greater than a year when kept at -20°C. When reconstituted in sterile pH 7.4 0.01M PBS or diluent of antibody the antibody is stable for at least two weeks at 2-4 °C.
PubMed:	PubMed
Product Detail:	The protein encoded by this gene was identified by its strong similarity with Saccharomyces cerevisiae Cdc45, an essential protein required to the initiation of DNA replication. Cdc45 is a member of the highly conserved multiprotein complex including Cdc6/Cdc18, the minichromosome maintenance proteins (MCMs) and DNA

polymerase, which is important for early steps of DNA replication in eukaryotes. This protein has been shown to interact with MCM7 and DNA polymerase alpha. Studies of the similar gene in *Xenopus* suggested that this protein play a pivotal role in the loading of DNA polymerase alpha onto chromatin. Multiple alternatively spliced transcript variants encoding different isoforms have been found for this gene.

Function:

Required for initiation of chromosomal DNA replication.<

Subunit:

Associated with ORC2.

Subcellular Location:

Cytoplasm. Nucleus.

Tissue Specificity:

Widely expressed, highest levels are found in adult testis and thymus and in fetal liver.

Similarity:

Belongs to the CDC45 family.

SWISS:

O75419

Gene ID:

8318

Database links:

[Entrez Gene: 8318](#)Human

[Entrez Gene: 12544](#)Mouse

[Entrez Gene: 287961](#)Rat

[Omim: 603465](#)Human

[SwissProt: O75419](#)Human

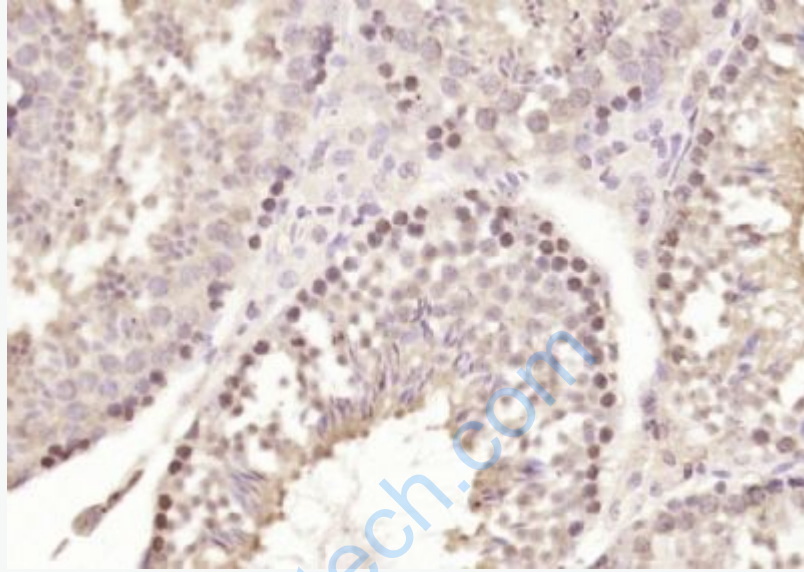
[SwissProt: Q9Z1X9](#)Mouse

[Unigene: 474217](#)Human

[Unigene: 1248](#)Mouse

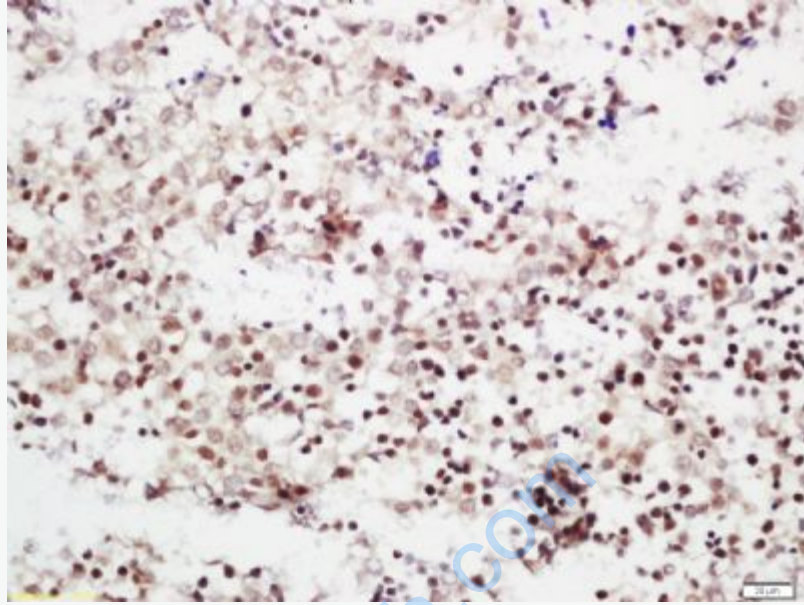
Important Note:

This product as supplied is intended for research use only, not for use in human, therapeutic or diagnostic applications.



Picture:

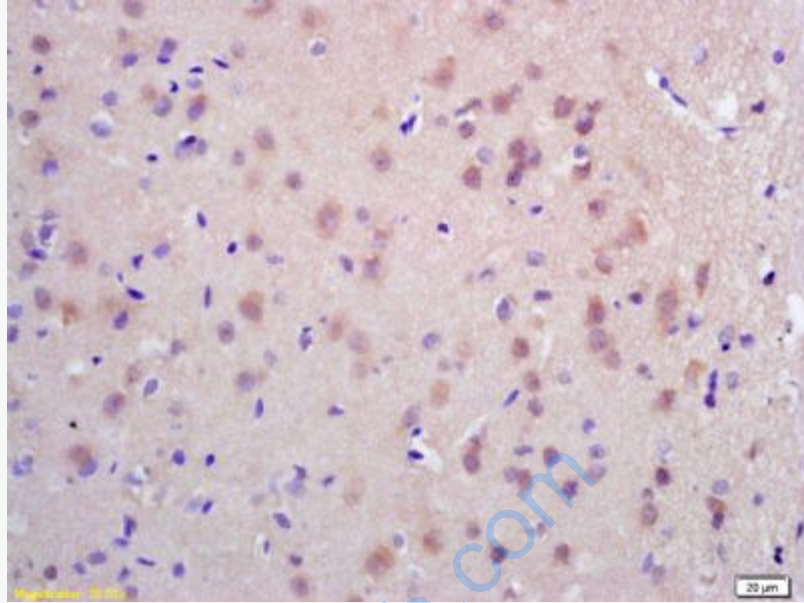
Paraformaldehyde-fixed, paraffin embedded (mouse testis); Antigen retrieval by boiling in sodium citrate buffer (pH6.0) for 15min; Block endogenous peroxidase by 3% hydrogen peroxide for 20 minutes; Blocking buffer (normal goat serum) at 37°C for 30min; Antibody incubation with (CDC45L) Polyclonal Antibody, Unconjugated (SL7785R) at 1:200 overnight at 4°C, followed by operating according to SP Kit(Rabbit) (sp-0023) instructions and DAB staining.



Tissue/cell: mouse embryo tissue; 4% Paraformaldehyde-fixed and paraffin-embedded;

Antigen retrieval: citrate buffer (0.01M, pH 6.0), Boiling bathing for 15min; Block endogenous peroxidase by 3% Hydrogen peroxide for 30min; Blocking buffer (normal goat serum,C-0005) at 37°C for 20 min;

Incubation: Anti-CDC45L Polyclonal Antibody, Unconjugated(SL7785R) 1:200, overnight at 4°C, followed by conjugation to the secondary antibody(SP-0023) and DAB(C-0010) staining



Tissue/cell: Rat brain; 4% Paraformaldehyde-fixed and paraffin-embedded;

Antigen retrieval: citrate buffer (0.01M, pH 6.0), Boiling bathing for 15min; Block endogenous peroxidase by 3% Hydrogen peroxide for 30min; Blocking buffer (normal goat serum,C-0005) at 37°C for 20 min;

Incubation:Anti-CDC45L Polyclonal Antibody, Unconjugated(SL7785R) 1:200, overnight at 4°C, followed by conjugation to the secondary antibody(SP-0023) and DAB(C-0010) staining