



## Rabbit Anti-FAM3C antibody

SL7862R

<b>Product Name:</b>	FAM3C
<b>Chinese Name:</b>	上皮分泌型FAM3C蛋白抗体
<b>Alias:</b>	Fam3c; FAM3C_HUMAN; family with sequence similarity 3, member C; GS3786; ILEI; Interleukin-like EMT inducer; Predicted osteoblast protein; Protein FAM3C.
<b>Organism Species:</b>	Rabbit
<b>Clonality:</b>	Polyclonal
<b>React Species:</b>	Human,Mouse,Rat,Chicken,Dog,Pig,Cow,Horse,
<b>Applications:</b>	WB=1:500-2000ELISA=1:500-1000IHC-P=1:400-800IHC-F=1:400-800IF=1:100-500 (Paraffin sections need antigen repair) not yet tested in other applications. optimal dilutions/concentrations should be determined by the end user.
<b>Molecular weight:</b>	22kDa
<b>Cellular localization:</b>	cytoplasmicSecretory protein
<b>Form:</b>	Lyophilized or Liquid
<b>Concentration:</b>	1mg/ml
<b>immunogen:</b>	KLH conjugated synthetic peptide derived from human FAM3C:151-227/227
<b>Lsotype:</b>	IgG
<b>Purification:</b>	affinity purified by Protein A
<b>Storage Buffer:</b>	0.01M TBS(pH7.4) with 1% BSA, 0.03% Proclin300 and 50% Glycerol.
<b>Storage:</b>	Store at -20 °C for one year. Avoid repeated freeze/thaw cycles. The lyophilized antibody is stable at room temperature for at least one month and for greater than a year when kept at -20°C. When reconstituted in sterile pH 7.4 0.01M PBS or diluent of antibody the antibody is stable for at least two weeks at 2-4 °C.
<b>PubMed:</b>	<a href="#">PubMed</a>
<b>Product Detail:</b>	ILEI is a 227 amino acid, ubiquitously expressed protein containing an amino-terminal signal peptide. Elevated levels of ILEI translation are observed in oncogenic, Ras-transformed mammary epithelial cells and epithelial to mesenchymal transition (Emt) as well as tumor growth and metastasis. Also, overexpression of ILEI results in loss of ZO-1, a protein involved in tight junctions, and expression of cytoplasmic E-cadherin, which has been shown to influence loss of polarity and invasiveness. Due to this evidence, it is

suspected that ILEI cooperates with oncogenic Ras to cause TGF $\beta$ -independent Emt and its overexpression is correlated with the invasion, metastasis and survival in a variety of cancers.

**Function:**

May be involved in retinal laminar formation. Promotes epithelial to mesenchymal transition.

**Subcellular Location:**

Secreted. Cytoplasmic vesicle. Note=Cytoplasmic in some cancer cells.

**Tissue Specificity:**

Present in most secretory epithelia (at protein level).

**Similarity:**

Belongs to the FAM3 family.

**SWISS:**

Q92520

**Gene ID:**

10447

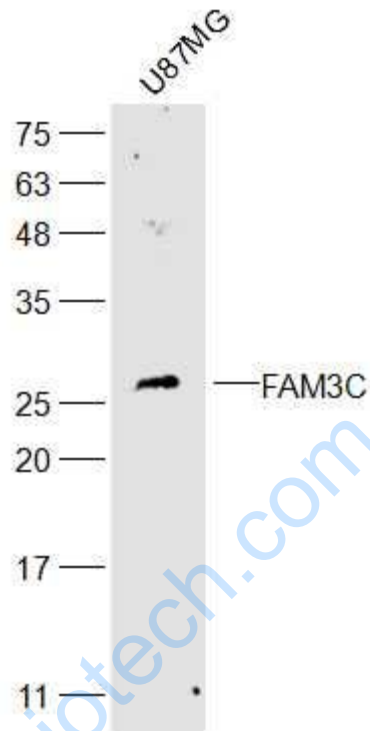
**Database links:**

UniProtKB/Swiss-Prot: Q92520.1

**Important Note:**

This product as supplied is intended for research use only, not for use in human, therapeutic or diagnostic applications.

Picture:



Sample:

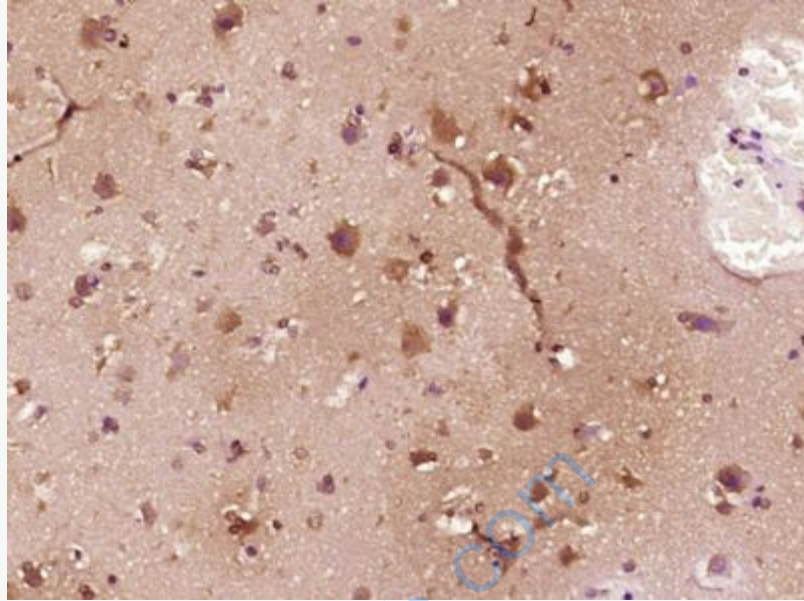
U87MG(Human) Cell Lysate at 30 ug

Primary: Anti-FAM3C (SL7862R) at 1/300 dilution

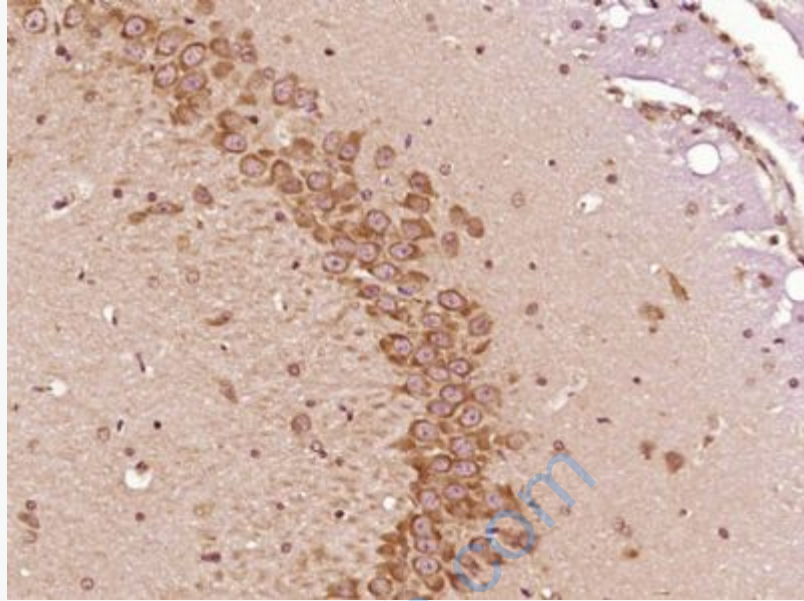
Secondary: IRDye800CW Goat Anti-Rabbit IgG at 1/20000 dilution

Predicted band size: 22 kD

Observed band size: 22 kD



Paraformaldehyde-fixed, paraffin embedded (Human brain glioma); Antigen retrieval by boiling in sodium citrate buffer (pH6.0) for 15min; Block endogenous peroxidase by 3% hydrogen peroxide for 20 minutes; Blocking buffer (normal goat serum) at 37°C for 30min; Antibody incubation with (FAM3C) Polyclonal Antibody, Unconjugated (SL7862R) at 1:400 overnight at 4°C, followed by operating according to SP Kit(Rabbit) (sp-0023) instructions and DAB staining.



Paraformaldehyde-fixed, paraffin embedded (Rat brain); Antigen retrieval by boiling in sodium citrate buffer (pH6.0) for 15min; Block endogenous peroxidase by 3% hydrogen peroxide for 20 minutes; Blocking buffer (normal goat serum) at 37°C for 30min; Antibody incubation with (FAM3C) Polyclonal Antibody, Unconjugated (SL7862R) at 1:400 overnight at 4°C, followed by operating according to SP Kit(Rabbit) (sp-0023) instructions and DAB staining.