



Rabbit Anti-BRSK1 antibody

SL7905R

Product Name:	BRSK1
Chinese Name:	丝氨酸/苏氨酸蛋白激酶SAD-B抗体
Alias:	BR serine/threonine kinase 1; BR serine/threonine protein kinase 1; BR serine/threonine-protein kinase 1; Brain-specific serine/threonine-protein kinase 1; BRSK 1; Brsk1; BRSK1_HUMAN; Protein kinase SAD1A; SAD 1; SAD1; SAD1 kinase; SAD1A; SADB; SadB kinase short isoform; Serine/threonine kinase SAD B; Serine/threonine-protein kinase SAD-B; Synapses of Amphids Defective homolog; FLJ43009; KIAA1811.
Organism Species:	Rabbit
Clonality:	Polyclonal
React Species:	Human,Mouse,Rat,Pig,Cow,Horse,
Applications:	ELISA=1:500-1000IHC-P=1:400-800IHC-F=1:400-800IF=1:100-500 (Paraffin sections need antigen repair) not yet tested in other applications. optimal dilutions/concentrations should be determined by the end user.
Molecular weight:	86kDa
Cellular localization:	The nucleuscytoplasmicThe cell membrane
Form:	Lyophilized or Liquid
Concentration:	1mg/ml
immunogen:	KLH conjugated synthetic peptide derived from human BRSK1:101-200/778
Lsotype:	IgG
Purification:	affinity purified by Protein A
Storage Buffer:	0.01M TBS(pH7.4) with 1% BSA, 0.03% Proclin300 and 50% Glycerol.
Storage:	Store at -20 °C for one year. Avoid repeated freeze/thaw cycles. The lyophilized antibody is stable at room temperature for at least one month and for greater than a year when kept at -20°C. When reconstituted in sterile pH 7.4 0.01M PBS or diluent of antibody the antibody is stable for at least two weeks at 2-4 °C.
PubMed:	PubMed
Product Detail:	Required for the polarization of forebrain neurons which endows axons and dendrites with distinct properties, possibly by locally regulating phosphorylation of microtubule-

associated proteins (By similarity). May be involved in the regulation of G2/M arrest in response to UV- or methyl methane sulfonate (MMS)-induced, but not IR-induced, DNA damage. Phosphorylates WEE1 and CDC25B in vitro and CDC25C in vitro and in vivo.

Tissue specificity: Widely expressed, with highest levels in brain and testis. Protein levels remain constant throughout the cell cycle.

Subcellular Location:

Cytoplasm. Nucleus. Cytoplasm, cytoskeleton, centrosome. Cell junction, synapse. Note=Localizes to synaptic vesicles in neurons. Nuclear in the absence of DNA damage. Translocated to the nucleus in response to UV- or MMS-induced DNA damage.

Tissue Specificity:

Widely expressed, with highest levels in brain and testis. Protein levels remain constant throughout the cell cycle.

Similarity:

Belongs to the protein kinase superfamily. CAMK Ser/Thr protein kinase family. SNF1 subfamily.

Contains 1 protein kinase domain.

Contains 1 UBA domain.

SWISS:

Q8TDC3

Gene ID:

84446

Database links:

[Entrez Gene: 84446](#)Human

[Entrez Gene: 381979](#)Mouse

[Entrez Gene: 499073](#)Rat

[Omim: 609235](#)Human

[SwissProt: Q8TDC3](#)Human

[SwissProt: Q5RJI5](#)Mouse

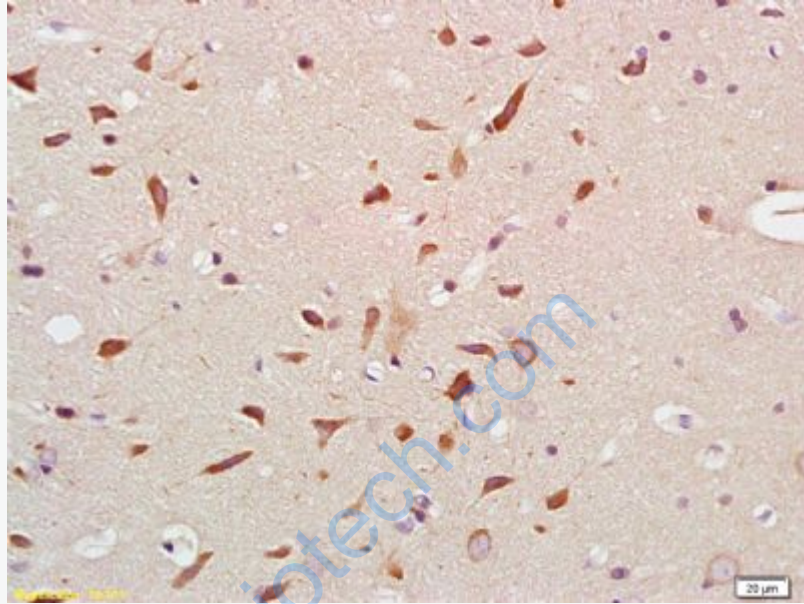
[SwissProt: B2DD29](#)Rat

[Unigene: 182081](#)Human

[Unigene: 297064](#)Mouse

Important Note:

This product as supplied is intended for research use only, not for use in human, therapeutic or diagnostic applications.



Picture:

Tissue/cell: rat brain tissue; 4% Paraformaldehyde-fixed and paraffin-embedded;
Antigen retrieval: citrate buffer (0.01M, pH 6.0), Boiling bathing for 15min; Block endogenous peroxidase by 3% Hydrogen peroxide for 30min; Blocking buffer (normal goat serum,C-0005) at 37°C for 20 min;
Incubation: Anti-BRSK1 Polyclonal Antibody, Unconjugated(SL7905R) 1:200, overnight at 4°C, followed by conjugation to the secondary antibody(SP-0023) and DAB(C-0010) staining