



Rabbit Anti-PLK5 antibody

SL7918R

Product Name:	PLK5
Chinese Name:	丝氨酸/苏氨酸蛋白激酶5抗体
Alias:	PLK5; PLK 5; PLK-5; polo like kinase 5, pseudogene; SgK384ps; PLK5_HUMAN.
Organism Species:	Rabbit
Clonality:	Polyclonal
React Species:	Human,Mouse,Rat,Dog,Pig,Sheep,
Applications:	WB=1:500-2000ELISA=1:500-1000IHC-P=1:400-800IHC-F=1:400-800IF=1:100-500 (Paraffin sections need antigen repair) not yet tested in other applications. optimal dilutions/concentrations should be determined by the end user.
Molecular weight:	36kDa
Cellular localization:	The nucleuscytoplasmic
Form:	Lyophilized or Liquid
Concentration:	1mg/ml
immunogen:	KLH conjugated synthetic peptide derived from human PLK5:191-280/336
Lsotype:	IgG
Purification:	affinity purified by Protein A
Storage Buffer:	0.01M TBS(pH7.4) with 1% BSA, 0.03% Proclin300 and 50% Glycerol.
Storage:	Store at -20 °C for one year. Avoid repeated freeze/thaw cycles. The lyophilized antibody is stable at room temperature for at least one month and for greater than a year when kept at -20°C. When reconstituted in sterile pH 7.4 0.01M PBS or diluent of antibody the antibody is stable for at least two weeks at 2-4 °C.
PubMed:	PubMed
Product Detail:	<p>PLK5 (Serine/threonine-protein kinase PLK5) belongs to the protein kinase superfamily and Ser/Thr protein kinase family and CDC5/Polo subfamily. PLK5P contains 1 POLO box domain and 1 Serine/Threonine protein kinase catalytic domain.</p> <p>Function: Inactive serine/threonine-protein kinase that plays a role in cell cycle progression and neuronal differentiation.</p>

Subcellular Location:

Nucleus, nucleolus (By similarity). Cytoplasm.

Tissue Specificity:

Expressed in the brain, neurons and glial cells. Also expressed in highly differentiated cells, such as the serous acini in the parotid gland, distal and proximal tubules of the kidney, tubules of the seminal gland, Kupffer cells and some hepatocytes in the liver, and some cells in the germinal center of lymph nodes (at protein level).

Similarity:

Belongs to the protein kinase superfamily. Ser/Thr protein kinase family. CDC5/Polo subfamily.

Contains 1 POLO box domain.

Contains 1 protein kinase domain.

SWISS:

Q496M5

Gene ID:

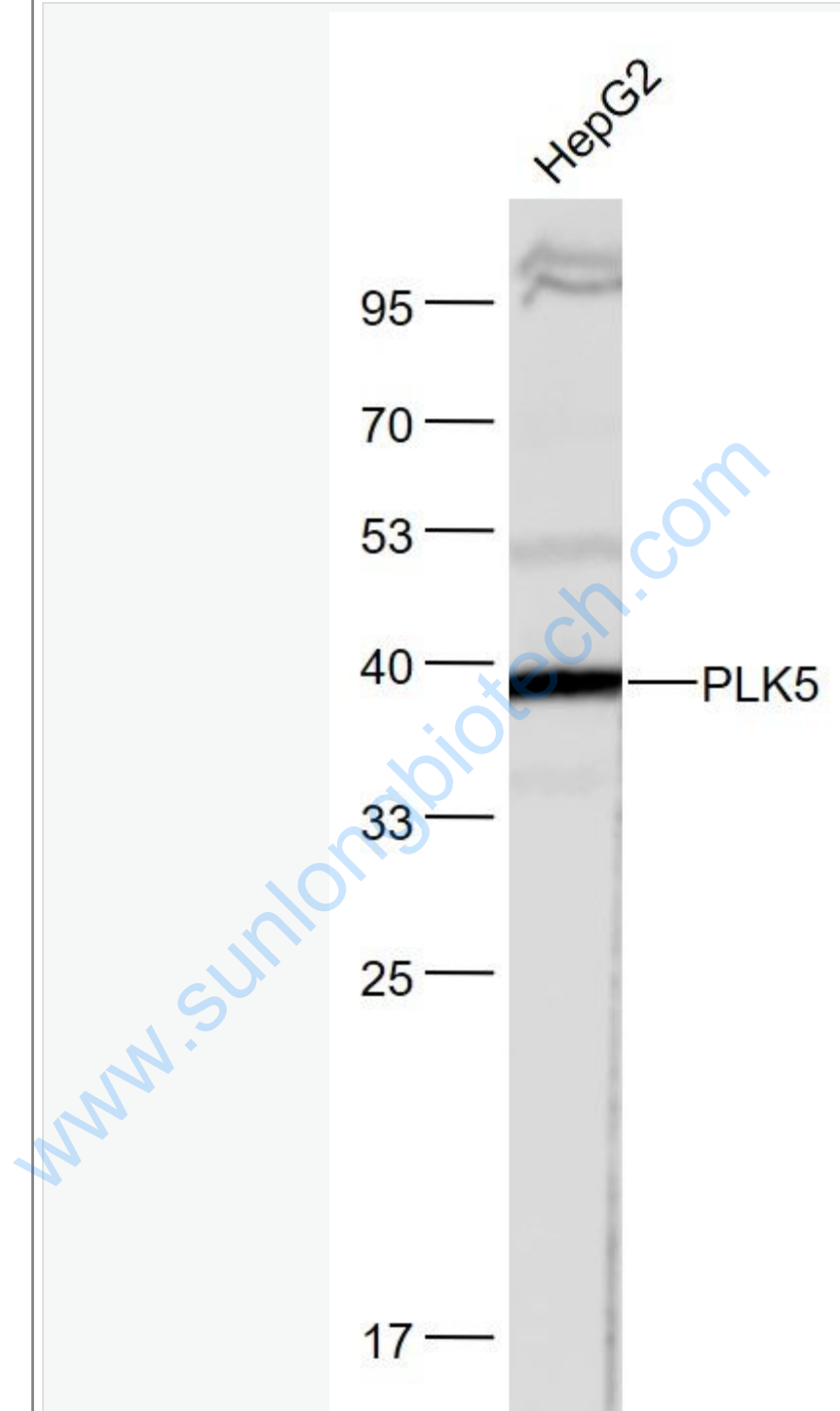
126520

Important Note:

This product as supplied is intended for research use only, not for use in human, therapeutic or diagnostic applications.

www.sunbio.com

Picture:



Sample:

HepG2(Human) Cell Lysate at 30 ug

Primary: Anti-PLK5 (SL7918R) at 1/1000 dilution

Secondary: IRDye800CW Goat Anti-Rabbit IgG at 1/20000 dilution

Predicted band size: 36 kD

Observed band size: 38 kD

www.sunlongbiotech.com