

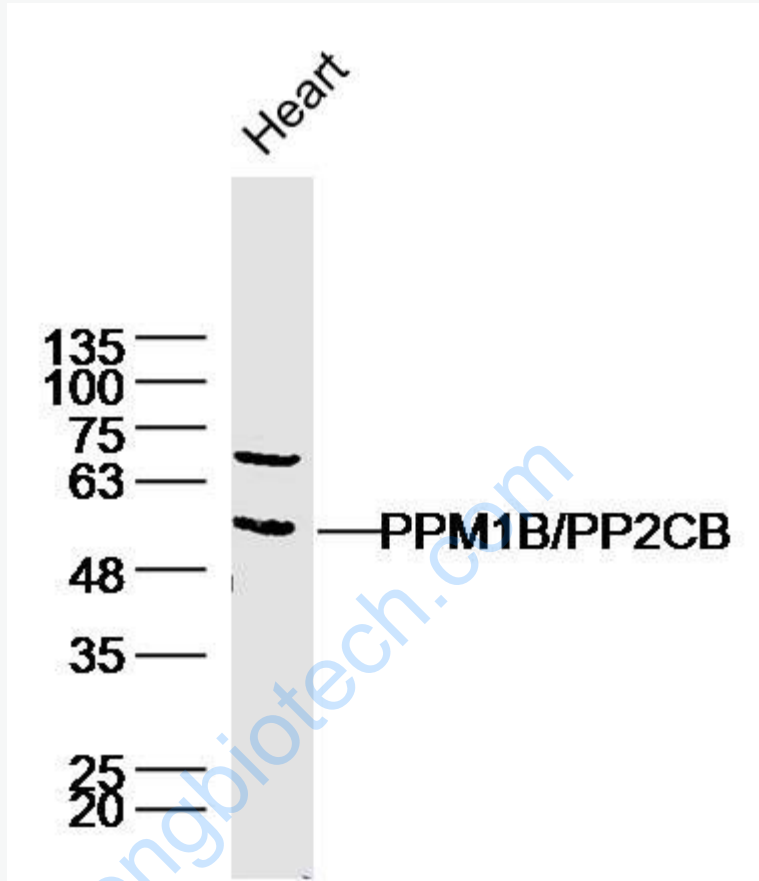


## Rabbit Anti-PPM1B/PP2CB antibody

SL7929R

<b>Product Name:</b>	PPM1B/PP2CB
<b>Chinese Name:</b>	蛋白质磷酸酶1B抗体(PP2C $\beta$ )
<b>Alias:</b>	PP2C beta; PP2C beta X; PP2C-beta; PP2CB; PP2Cbeta; PPC2BETAX; PPM 1B; Ppm1b; PPM1B_HUMAN; Protein phosphatase 1B (formerly 2C) magnesium dependent beta isoform; Protein phosphatase 1B; Protein phosphatase 1B magnesium dependent beta isoform; Protein phosphatase 2C beta isoform; Protein phosphatase 2C isoform beta; Protein phosphatase 2C like protein; Protein phosphatase, Mg <sup>2+</sup> /Mn <sup>2+</sup> dependent, 1B; MGC21657.
<b>Organism Species:</b>	Rabbit
<b>Clonality:</b>	Polyclonal
<b>React Species:</b>	Human,Mouse,Rat,Chicken,Dog,Cow,Horse,Rabbit,Sheep,
<b>Applications:</b>	WB=1:500-2000ELISA=1:500-1000 not yet tested in other applications. optimal dilutions/concentrations should be determined by the end user.
<b>Molecular weight:</b>	53kDa
<b>Cellular localization:</b>	cytoplasmicThe cell membrane
<b>Form:</b>	Lyophilized or Liquid
<b>Concentration:</b>	1mg/ml
<b>immunogen:</b>	KLH conjugated synthetic peptide derived from human PPM1B:1-80/479
<b>Lsotype:</b>	IgG
<b>Purification:</b>	affinity purified by Protein A
<b>Storage Buffer:</b>	0.01M TBS(pH7.4) with 1% BSA, 0.03% Proclin300 and 50% Glycerol.
<b>Storage:</b>	Store at -20 °C for one year. Avoid repeated freeze/thaw cycles. The lyophilized antibody is stable at room temperature for at least one month and for greater than a year when kept at -20°C. When reconstituted in sterile pH 7.4 0.01M PBS or diluent of antibody the antibody is stable for at least two weeks at 2-4 °C.
<b>PubMed:</b>	<a href="#">PubMed</a>
<b>Product Detail:</b>	

Picture:



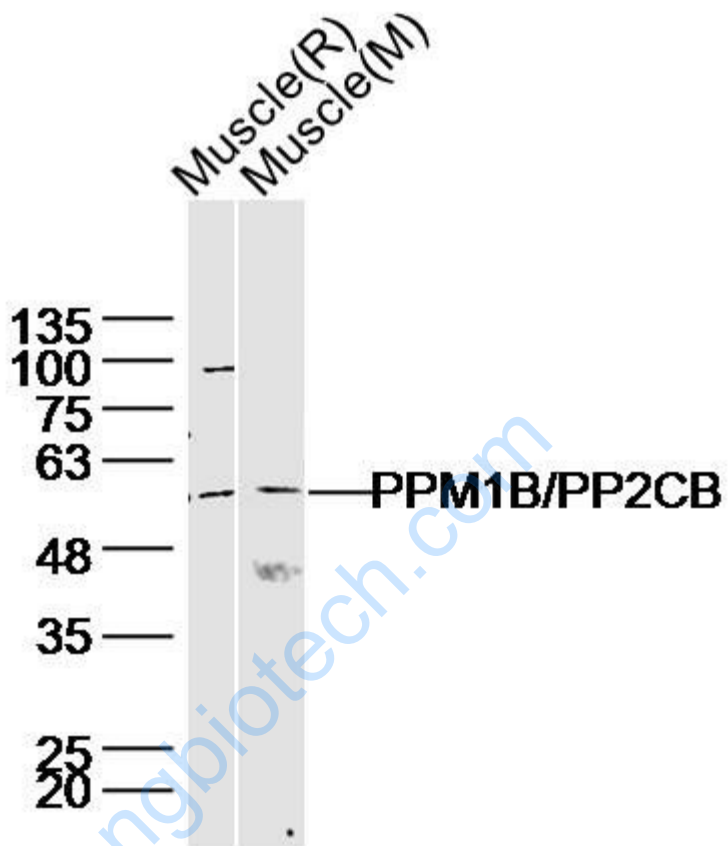
Sample: Heart(Rat) Lysate at 40 ug

Primary: Anti-PPM1B/PP2CB(SL7929R) at 1/300 dilution

Secondary: IRDye800CW Goat Anti-Rabbit IgG at 1/20000 dilution

Predicted band size: 53 kD

Observed band size: 53 kD



Sample:

Muscle (Rat) Lysate at 40 ug

Muscle (Mouse) Lysate at 40 ug

Primary: Anti-PPM1B/PP2CB(SL7929R) at 1/300 dilution

Secondary: IRDye800CW Goat Anti-Rabbit IgG at 1/20000 dilution

Predicted band size: 53 kD

Observed band size: 53 kD