



Rabbit Anti-PPP2R1A antibody

SL7931R

Product Name:	PPP2R1A
Chinese Name:	蛋白质磷酸酶2调节亚基1A抗体
Alias:	PP2A; PP2A subunit A PR65-alpha isoform; PP2A subunit A R1 alpha isoform; PP2A, subunit A, PR65-alpha isoform; PP2A, subunit A, R1-alpha isoform; PPP2R1A; ppp2r1a-b; PR65; PR65A; Protein phosphatase 2 (formerly 2A), regulatory subunit A (PR 65), alpha isoform; Protein phosphatase 2 (Formerly 2A), regulatory subunit A (PR 65), alpha isoform, isoform CRA_a ; Protein phosphatase 2 (formerly 2A), regulatory subunit A,; Protein phosphatase 2 regulatory subunit A alpha isoform; Protein phosphatase 2, 65-KD regulatory subunit A, alpha; Protein phosphatase 2, regulatory subunit A, alpha isoform; Protein phosphatase 2, structural/regulatory subunit A, alpha; PPP2R1A; Serine threonine protein phosphatase 65 kDa; Serine/threonine protein phosphatase 2A 65 KDA regulatory subunit A alpha isoform; Serine/threonine-protein phosphatase 2A 65 kDa regulatory subunit A alpha isoform; Alpha isoform of regulatory subunit A, protein phosphatase; DKFZp470L0914; Medium tumor antigen-associated 61 kDa protein; 2AAA HUMAN.
Organism Species:	Rabbit
Clonality:	Polyclonal
React Species:	Human,Mouse,Rat,Dog,Pig,Cow,Horse,
Applications:	WB=1:500-2000ELISA=1:500-1000IHC-P=1:400-800IHC-F=1:400-800IF=1:100-500 (Paraffin sections need antigen repair) not yet tested in other applications. optimal dilutions/concentrations should be determined by the end user.
Molecular weight:	65kDa
Cellular localization:	The nucleuscytoplasmic
Form:	Lyophilized or Liquid
Concentration:	1mg/ml
immunogen:	KLH conjugated synthetic peptide derived from human PPP2R1A:166-255/589
Lsotype:	IgG
Purification:	affinity purified by Protein A
Storage Buffer:	0.01M TBS(pH7.4) with 1% BSA, 0.03% Proclin300 and 50% Glycerol.

Storage:	Store at -20 °C for one year. Avoid repeated freeze/thaw cycles. The lyophilized antibody is stable at room temperature for at least one month and for greater than a year when kept at -20°C. When reconstituted in sterile pH 7.4 0.01M PBS or diluent of antibody the antibody is stable for at least two weeks at 2-4 °C.
PubMed:	PubMed
Product Detail:	<p>Protein phosphatase 2A (PP2A) is the most abundant phosphatase specific for serine and threonine phosphorylation in mammalian cells. It consists of a common heteromeric core enzyme, which is composed of a catalytic subunit and a constant regulatory subunit, that associates with a variety of regulatory subunits. The constant regulatory subunit alpha (PPP2R1A) serves as a scaffolding molecule to coordinate the assembly of the catalytic subunit and a variable regulatory beta subunit.</p> <p>Function: The PR65 subunit of protein phosphatase 2A serves as a scaffolding molecule to coordinate the assembly of the catalytic subunit and a variable regulatory B subunit. Required for proper chromosome segregation and for centromeric localization of SGOL1 in mitosis.</p> <p>Subunit: Found in a complex with at least ARL2, PPP2CB, PPP2R1A, PPP2R2A, PPP2R5E and TBCD (By similarity). PP2A consists of a common heterodimeric core enzyme, composed of PPP2CA a 36 kDa catalytic subunit (subunit C) and PPP2R1A a 65 kDa constant regulatory subunit (PR65 or subunit A), that associates with a variety of regulatory subunits. Proteins that associate with the core dimer include three families of regulatory subunits B (the R2/B/PR55/B55, R3/B"/PR72/PR130/PR59 and R5/B'/B56 families), the 48 kDa variable regulatory subunit, viral proteins, and cell signaling molecules. Interacts with IPO9. Interacts with TP53 and SGOL1. Interacts with PLA2G16; this interaction might decrease PP2A activity.</p> <p>Subcellular Location: Cytoplasm. Chromosome, centromere.</p> <p>Similarity: Belongs to the phosphatase 2A regulatory subunit A family. Contains 15 HEAT repeats.</p> <p>SWISS: P30153</p> <p>Gene ID: 5518</p> <p>Database links: ntrez Gene: 5518Human</p>

[Entrez Gene: 51792](#)Mouse

[Entrez Gene: 397088](#)Pig

[Entrez Gene: 117281](#)Rat

[Omim: 605983](#)Human

[SwissProt: Q32P15](#)Cow

[SwissProt: P30153](#)Human

[SwissProt: Q76MZ3](#)Mouse

[SwissProt: P54612](#)Pig

[Unigene: 467192](#)Human

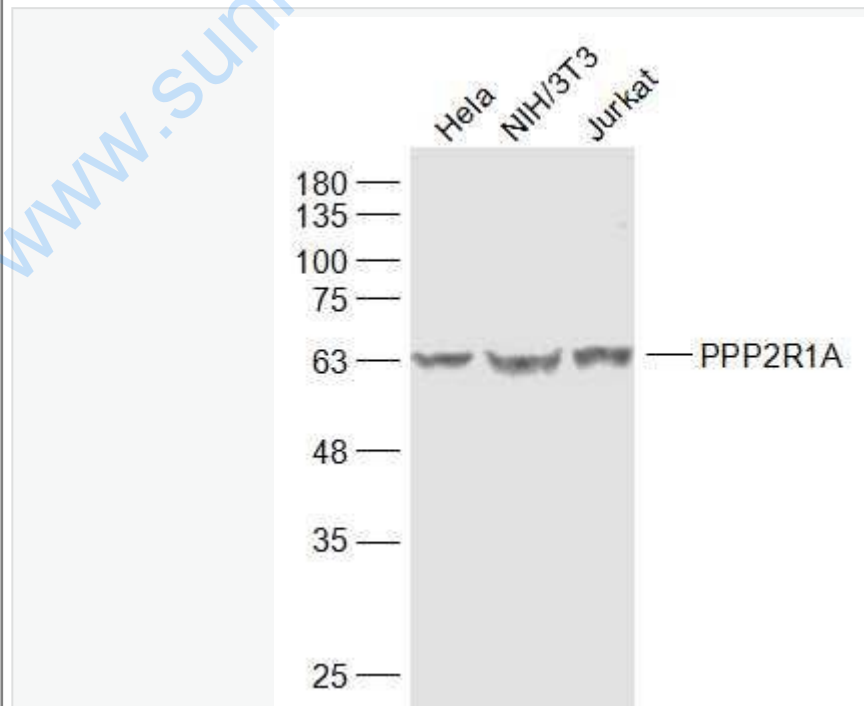
[Unigene: 294138](#)Mouse

[Unigene: 4108](#)Rat

Important Note:

This product as supplied is intended for research use only, not for use in human, therapeutic or diagnostic applications.

Picture:



Sample:

Hela(Human) Cell Lysate at 30 ug

NIH/3T3(Mouse) Cell Lysate at 30 ug

Jurkat(Human) Cell Lysate at 30 ug

Primary: Anti-PPP2R1A (SL7931R) at 1/1000 dilution

Secondary: IRDye800CW Goat Anti-Rabbit IgG at 1/20000 dilution

Predicted band size: 65 kD

Observed band size: 65 kD

www.sunlongbiotech.com