



Rabbit Anti-PPP2R1B antibody

SL7932R

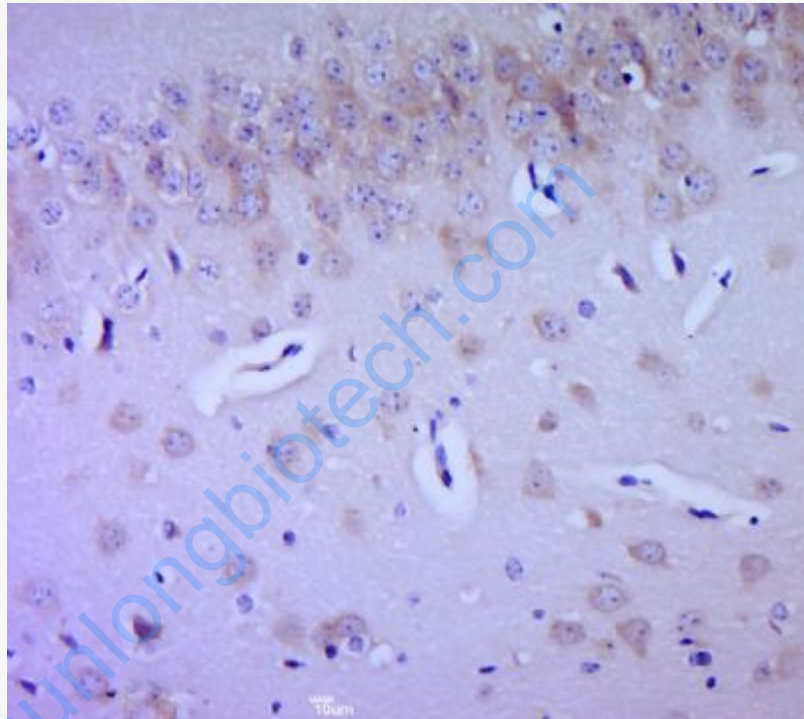
Product Name:	PPP2R1B
Chinese Name:	蛋白质磷酸酶2调节亚基1B抗体
Alias:	2AAB_HUMAN; beta isoform of regulatory subunit A, protein phosphatase 2; PP2A A beta; PP2A subunit A isoform PR65-beta; PP2A subunit A isoform R1-beta; PP2A, subunit A, PR65 beta isoform; PP2A, subunit A, R1 beta isoform; PPP2R1B; PR65B; protein phosphatase 2 (formerly 2A), regulatory subunit A (PR 65), beta isoform; protein phosphatase 2 (formerly 2A), regulatory subunit A, beta isoform; Protein phosphatase 2 regulatory subunit A alpha isoform; protein phosphatase 2, structural/regulatory subunit A, beta isoform; Serine threonine protein phosphatase 65 kDa; serine/threonine protein phosphatase 2A 65 kDa regulatory subunit A, beta isoform; serine/threonine protein phosphatase 2A, 65 kDa regulatory subunit A, beta isoform; Serine/threonine-protein phosphatase 2A 65 kDa regulatory subunit A beta isoform.
Organism Species:	Rabbit
Clonality:	Polyclonal
React Species:	Human, Mouse, Rat, Dog, Pig, Cow, Horse, Sheep,
Applications:	IHC-P=1:400-800 IHC-F=1:400-800 IF=1:100-500 (Paraffin sections need antigen repair) not yet tested in other applications. optimal dilutions/concentrations should be determined by the end user.
Molecular weight:	65kDa
Cellular localization:	Extracellular matrix Secretory protein
Form:	Lyophilized or Liquid
Concentration:	1mg/ml
immunogen:	KLH conjugated synthetic peptide derived from human PPP2R1B:21-120/601
Lsotype:	IgG
Purification:	affinity purified by Protein A
Storage Buffer:	0.01M TBS(pH7.4) with 1% BSA, 0.03% Proclin300 and 50% Glycerol.
Storage:	Store at -20 °C for one year. Avoid repeated freeze/thaw cycles. The lyophilized antibody is stable at room temperature for at least one month and for greater than a year when kept at -20°C. When reconstituted in sterile pH 7.4 0.01M PBS or diluent of

	antibody the antibody is stable for at least two weeks at 2-4 °C.
PubMed:	PubMed
Product Detail:	<p>The PR65 subunit of protein phosphatase 2A serves as a scaffolding molecule to coordinate the assembly of the catalytic subunit and a variable regulatory B subunit.</p> <p>Function: The PR65 subunit of protein phosphatase 2A serves as a scaffolding molecule to coordinate the assembly of the catalytic subunit and a variable regulatory B subunit.</p> <p>Subunit: PP2A consists of a common heterodimeric core enzyme, composed of a 36 kDa catalytic subunit (subunit C) and a 65 kDa constant regulatory subunit (PR65 or subunit A), that associates with a variety of regulatory subunits. Proteins that associate with the core dimer include three families of regulatory subunits B (the R2/B/PR55/B55, R3/B''/PR72/PR130/PR59 and R5/B'/B56 families), the 48 kDa variable regulatory subunit, viral proteins, and cell signaling molecules. Interacts with IPO9. Interacts with SGOL1. Interacts with RAF1.</p> <p>Similarity: Belongs to the phosphatase 2A regulatory subunit A family. Contains 15 HEAT repeats.</p> <p>SWISS: P30154</p> <p>Gene ID: 5519</p> <p>Database links:</p> <p>Entrez Gene: 5519Human Entrez Gene: 73699Mouse Entrez Gene: 315648Rat Omim: 603113Human SwissProt: P30154Human SwissProt: Q7TNP2Mouse SwissProt: Q4QQT4Rat Unigene: 584790Human Unigene: 7726Mouse</p>

[Unigene: 163017](#)Rat

Important Note:

This product as supplied is intended for research use only, not for use in human, therapeutic or diagnostic applications.



Picture:

Paraformaldehyde-fixed, paraffin embedded (mouse brain tissue); Antigen retrieval by boiling in sodium citrate buffer (pH6.0) for 15min; Block endogenous peroxidase by 3% hydrogen peroxide for 20 minutes; Blocking buffer (normal goat serum) at 37°C for 30min; Antibody incubation with (PPP2R1B) Polyclonal Antibody, Unconjugated (SL7932R) at 1:400 overnight at 4°C, followed by a conjugated secondary (sp-0023) for 20 minutes and DAB staining.