



Rabbit Anti-ATXN7L2 antibody

SL7976R

Product Name:	ATXN7L2
Chinese Name:	共济失调蛋白7样2抗体
Alias:	Ataxin 7 like 1; Ataxin 7 like 2; Ataxin-7-like protein 2; Atxn7l2 protein; FLJ00381; MGC46534; OTTHUMP00000012702; RGD1307047; 2610528J18Rik; AT7L2 HUMAN.
Organism Species:	Rabbit
Clonality:	Polyclonal
React Species:	Human,Mouse,Rat,Dog,Pig,Cow,Horse,Sheep,
Applications:	WB=1:500-2000ELISA=1:500-1000IHC-P=1:400-800IHC-F=1:400-800IF=1:100-500 (Paraffin sections need antigen repair) not yet tested in other applications. optimal dilutions/concentrations should be determined by the end user.
Molecular weight:	77kDa
Cellular localization:	The nucleus
Form:	Lyophilized or Liquid
Concentration:	1mg/ml
immunogen:	KLH conjugated synthetic peptide derived from human ATXN7L2:255-340/722
Lsotype:	IgG
Purification:	affinity purified by Protein A
Storage Buffer:	0.01M TBS(pH7.4) with 1% BSA, 0.03% Proclin300 and 50% Glycerol.
Storage:	Store at -20 °C for one year. Avoid repeated freeze/thaw cycles. The lyophilized antibody is stable at room temperature for at least one month and for greater than a year when kept at -20°C. When reconstituted in sterile pH 7.4 0.01M PBS or diluent of antibody the antibody is stable for at least two weeks at 2-4 °C.
PubMed:	PubMed
Product Detail:	ATXN7L2 (Ataxin-7-like protein 2) is a 722 amino acid protein that contains a SCA7 domain, which is highly conserved through all members of the ATXN7 gene family. The gene encoding ATXN7L2 maps to human chromosome 1, the largest human chromosome spanning about 260 million base pairs and making up 8% of the human genome.

Subcellular Location:

Nuclear

Similarity:

Contains 1 SCA7 domain.

SWISS:

Q5T6C5

Gene ID:

127002

Database links:

[Entrez Gene: 127002](#) Human

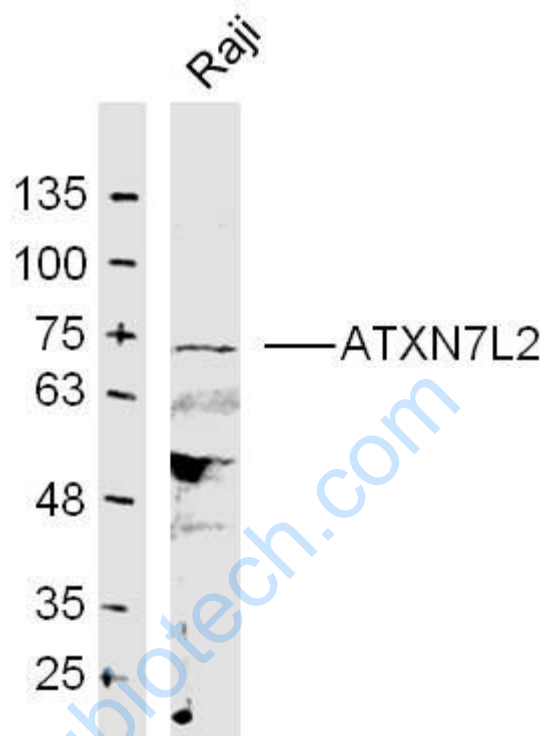
[SwissProt: Q5T6C5](#) Human

Important Note:

This product as supplied is intended for research use only, not for use in human, therapeutic or diagnostic applications.

www.sunlongbiotech.com

Picture:



Sample:

Raji Cell (Human) Lysate at 30 ug

Primary: Anti- ATXN7L2 (SL7976R) at 1/300 dilution

Secondary: IRDye800CW Goat Anti-Rabbit IgG at 1/20000 dilution

Predicted band size: 77 kD

Observed band size: 74 kD