



Rabbit Anti-CA7 antibody

SL7984R

Product Name:	CA7
Chinese Name:	碳酸酐酶7抗体
Alias:	CA 7; CA VII; CA-VII; Ca7; CAH7_HUMAN; Car7; Carbonate dehydratase VII; Carbonic anhydrase 7; Carbonic anhydrase VII; Carbonic dehydratase; CAVII.
Organism Species:	Rabbit
Clonality:	Polyclonal
React Species:	Human,Mouse,Rat,Dog,Cow,Horse,Rabbit,Sheep,
Applications:	WB=1:500-2000ELISA=1:500-1000IHC-P=1:400-800IHC-F=1:400-800IF=1:100-500 (Paraffin sections need antigen repair) not yet tested in other applications. optimal dilutions/concentrations should be determined by the end user.
Molecular weight:	30kDa
Cellular localization:	cytoplasmic
Form:	Lyophilized or Liquid
Concentration:	1mg/ml
immunogen:	KLH conjugated synthetic peptide derived from human CA7:86-150/264
Lsotype:	IgG
Purification:	affinity purified by Protein A
Storage Buffer:	0.01M TBS(pH7.4) with 1% BSA, 0.03% Proclin300 and 50% Glycerol.
Storage:	Store at -20 °C for one year. Avoid repeated freeze/thaw cycles. The lyophilized antibody is stable at room temperature for at least one month and for greater than a year when kept at -20°C. When reconstituted in sterile pH 7.4 0.01M PBS or diluent of antibody the antibody is stable for at least two weeks at 2-4 °C.
PubMed:	PubMed
Product Detail:	Carbonic anhydrases are a large family of zinc metalloenzymes that catalyze the reversible hydration of carbondioxide. They participate in a variety of biological processes,including respiration, calcification, acid-base balance, boneresorption, and the formation of aqueous humor, cerebrospinalfluid, saliva, and gastric acid. They show extensive diversity intissue distribution and in their subcellular localization. Thecytosolic protein encoded by this gene is predominantly expressedin the salivary

glands. Alternative splicing in the coding region results in multiple transcript variants encoding different isoforms. [provided by RefSeq, Jul 2008].

Function:

Reversible hydration of carbon dioxide.

Subcellular Location:

Cytoplasm (Probable).

Similarity:

Belongs to the alpha-carbonic anhydrase family.

SWISS:

P43166

Gene ID:

766

Database links:

[Entrez Gene: 766](#)Human

[Entrez Gene: 12354](#)Mouse

[Omim: 114770](#)Human

[SwissProt: P43166](#)Human

[SwissProt: Q9ERQ8](#)Mouse

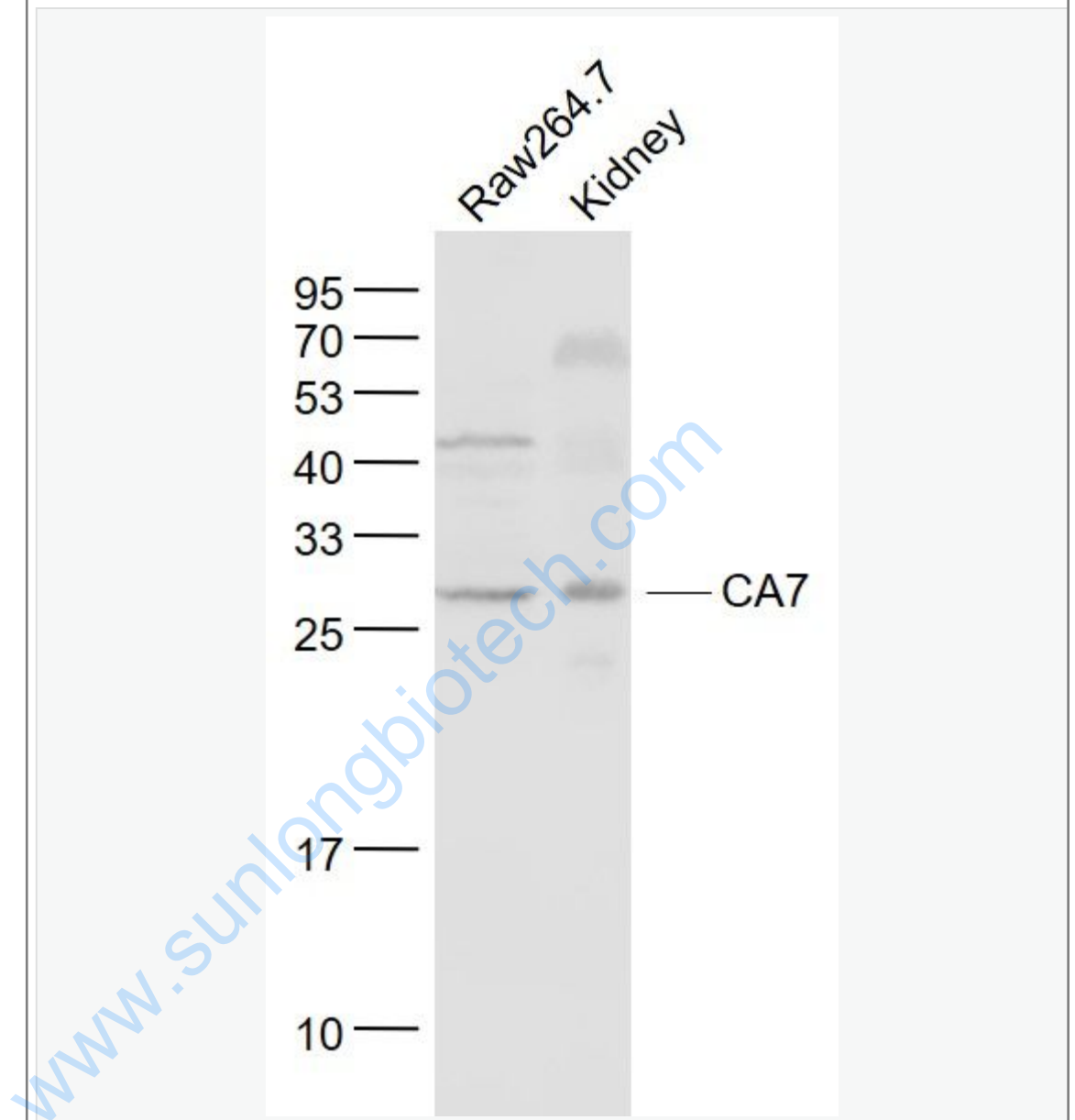
[Unigene: 37014](#)Human

[Unigene: 129265](#)Mouse

Important Note:

This product as supplied is intended for research use only, not for use in human, therapeutic or diagnostic applications.

Picture:



Sample:

Raw264.7(Mouse) Cell Lysate at 30 ug

Kidney (Mouse) Lysate at 40 ug

Primary: Anti- CA7 (SL7984R) at 1/1000 dilution

Secondary: IRDye800CW Goat Anti-Rabbit IgG at 1/20000 dilution

Predicted band size: 30 kD

	Observed band size: 30 kD
--	---------------------------

www.sunlongbiotech.com