



Rabbit Anti-CEACAM21 antibody

SL7996R

Product Name:	CEACAM21
Chinese Name:	癌胚抗原相关Cell adhesion molecule21抗体
Alias:	Carcinoembryonic antigen related cell adhesion molecule 21; Carcinoembryonic antigen-related cell adhesion molecule 21; CEA21_HUMAN; CEACAM21; CEACAM3; FLJ13540; MGC119874; OTTHUMP00000199036; R29124_1.
Organism Species:	Rabbit
Clonality:	Polyclonal
React Species:	Human,Mouse,
Applications:	WB=1:500-2000ELISA=1:500-1000IHC-P=1:400-800IHC-F=1:400-800ICC=1:100-500IF=1:100-500 (Paraffin sections need antigen repair) not yet tested in other applications. optimal dilutions/concentrations should be determined by the end user.
Molecular weight:	29kDa
Cellular localization:	The cell membrane
Form:	Lyophilized or Liquid
Concentration:	1mg/ml
immunogen:	KLH conjugated synthetic peptide derived from human CEACAM21:201-293/293<Extracellular>
Lsotype:	IgG
Purification:	affinity purified by Protein A
Storage Buffer:	0.01M TBS(pH7.4) with 1% BSA, 0.03% Proclin300 and 50% Glycerol.
Storage:	Store at -20 °C for one year. Avoid repeated freeze/thaw cycles. The lyophilized antibody is stable at room temperature for at least one month and for greater than a year when kept at -20°C. When reconstituted in sterile pH 7.4 0.01M PBS or diluent of antibody the antibody is stable for at least two weeks at 2-4 °C.
PubMed:	PubMed
Product Detail:	Carcinoembryonic antigen (CEA) is one of the most commonly used tumor markers in serum immunoassay determinations of carcinoma. Members of the CEACAM (carcinoembryonic antigen-related cell adhesion molecule) family contain a single N domain, with structural homology to the immunoglobulin variable domains, followed by

a variable number of immunoglobulin constant-like A and/or B domains. CEACAM21 (carcinoembryonic antigen-related cell adhesion molecule 21) is a 293 amino acid single-pass type I membrane protein that belongs to the CEACAM family and contains one Ig-like C2-type domain. CEACAM21 exists as three alternatively spliced isoforms that are encoded by a gene which maps to human chromosome 19.

Subcellular Location:

Membrane; Single-pass type I membrane protein (Potential).

Similarity:

Belongs to the immunoglobulin superfamily. CEA family.
Contains 1 Ig-like C2-type (immunoglobulin-like) domain.

SWISS:

Q3KPI0

Gene ID:

90273

Database links:

[Entrez Gene: 90273](#)Human

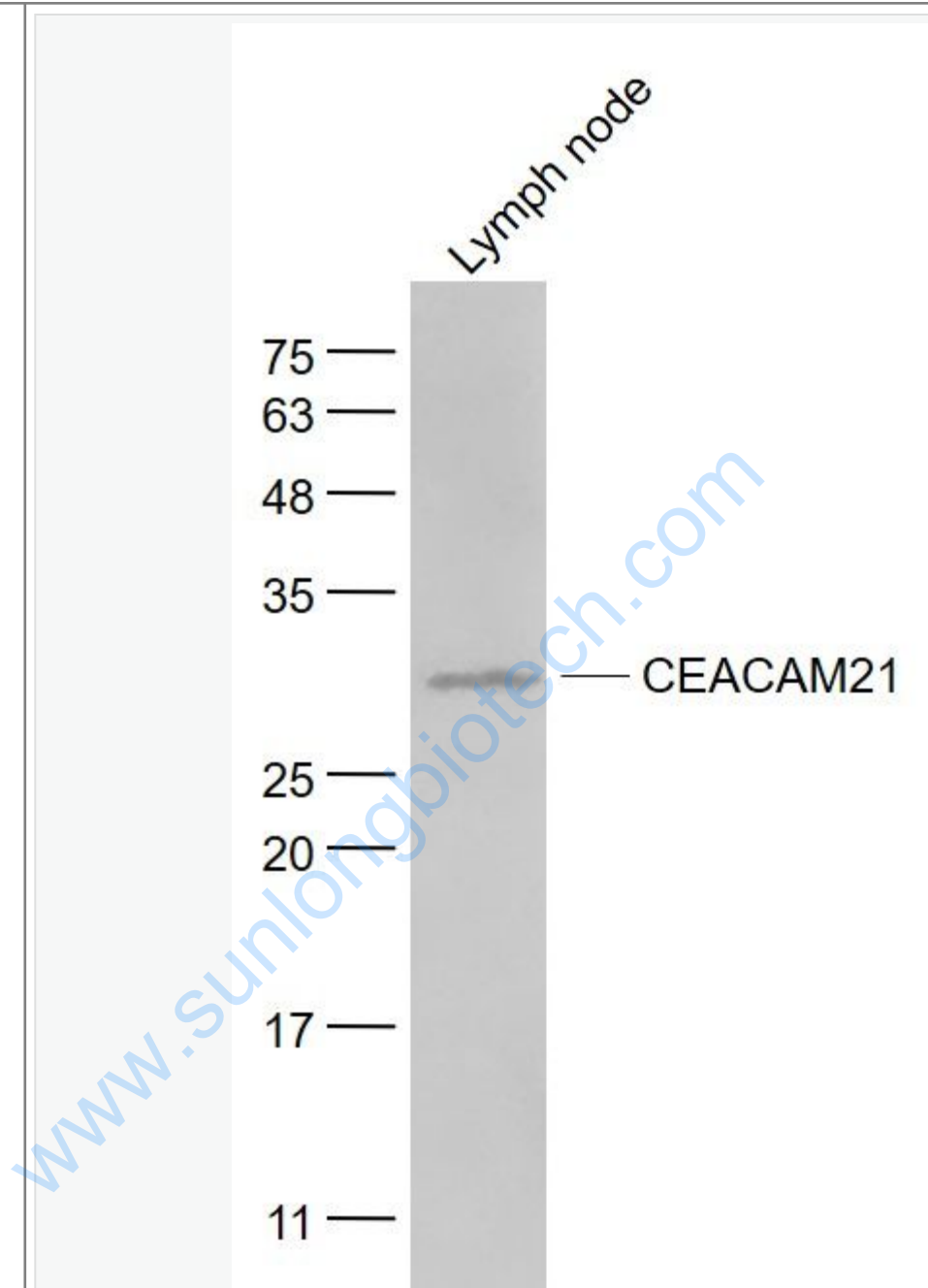
[SwissProt: Q3KPI0](#)Human

[Unigene: 655885](#)Human

Important Note:

This product as supplied is intended for research use only, not for use in human, therapeutic or diagnostic applications.

Picture:



Sample:

Lymph node (Mouse) Lysate at 40 ug

Primary: Anti- CEACAM21 (SL7996R) at 1/1000 dilution

Secondary: IRDye800CW Goat Anti-Rabbit IgG at 1/20000 dilution

Predicted band size: 29 kD

	Observed band size: 29 kD
--	---------------------------

www.sunlongbiotech.com