



## Rabbit Anti-WNT 5B antibody

SL8010R

<b>Product Name:</b>	WNT 5B
<b>Chinese Name:</b>	信号通路Wnt-5a抗体
<b>Alias:</b>	MGC2648; Wnt5b; Protein Wnt-5b; Wingless type MMTV integration site family, member 5B; WNT 5B; WNT 5B protein; Wnt5b; WNT5B protein; WNT5B HUMAN.
<b>Organism Species:</b>	Rabbit
<b>Clonality:</b>	Polyclonal
<b>React Species:</b>	Human,Mouse,Rat,
<b>Applications:</b>	WB=1:500-2000ELISA=1:500-1000IHC-P=1:400-800IHC-F=1:400-800ICC=1:100-500IF=1:100-500 (Paraffin sections need antigen repair) not yet tested in other applications. optimal dilutions/concentrations should be determined by the end user.
<b>Molecular weight:</b>	38kDa
<b>Cellular localization:</b>	Secretory protein
<b>Form:</b>	Lyophilized or Liquid
<b>Concentration:</b>	1mg/ml
<b>immunogen:</b>	KLH conjugated synthetic peptide derived from human WNT 5B:201-300/359
<b>Lsotype:</b>	IgG
<b>Purification:</b>	affinity purified by Protein A
<b>Storage Buffer:</b>	Preservative: 15mM Sodium Azide, Constituents: 1% BSA, 0.01M PBS, pH 7.4
<b>Storage:</b>	Store at -20 °C for one year. Avoid repeated freeze/thaw cycles. The lyophilized antibody is stable at room temperature for at least one month and for greater than a year when kept at -20°C. When reconstituted in sterile pH 7.4 0.01M PBS or diluent of antibody the antibody is stable for at least two weeks at 2-4 °C.
<b>PubMed:</b>	<a href="#">PubMed</a>
<b>Product Detail:</b>	The WNT gene family consists of structurally related genes which encode secreted signaling proteins. These proteins have been implicated in oncogenesis and in several developmental processes, including regulation of cell fate and patterning during embryogenesis. This gene is a member of the WNT gene family. It encodes a protein which shows 94% and 80% amino acid identity to the mouse Wnt5b protein and the human WNT5A protein, respectively. Alternative splicing of this gene generates 2

transcript variants. [provided by RefSeq, Jul 2008]

**Function:**

Ligand for members of the frizzled family of seven transmembrane receptors. Probable developmental protein. May be a signaling molecule which affects the development of discrete regions of tissues. Is likely to signal over only few cell diameters.

**Subunit:**

Interacts with PORCN.

**Subcellular Location:**

Secreted > extracellular space > extracellular matrix.

**Similarity:**

Belongs to the Wnt family.

**SWISS:**

Q9H1J7

**Gene ID:**

81029

**Database links:**

[Entrez Gene: 508008](#) Cow

[Entrez Gene: 486756](#) Dog

[Entrez Gene: 81029](#) Human

[Entrez Gene: 22419](#) Mouse

[Entrez Gene: 100349579](#) Rabbit

[Entrez Gene: 282582](#) Rat

[Entrez Gene: 30105](#) Zebrafish

[Omir: 606361](#) Human

[SwissProt: Q9H1J7](#) Human

[SwissProt: P22726](#) Mouse

[SwissProt: Q92050](#) Zebrafish

[Unigene: 306051](#) Human

[Unigene: 321818](#) Mouse

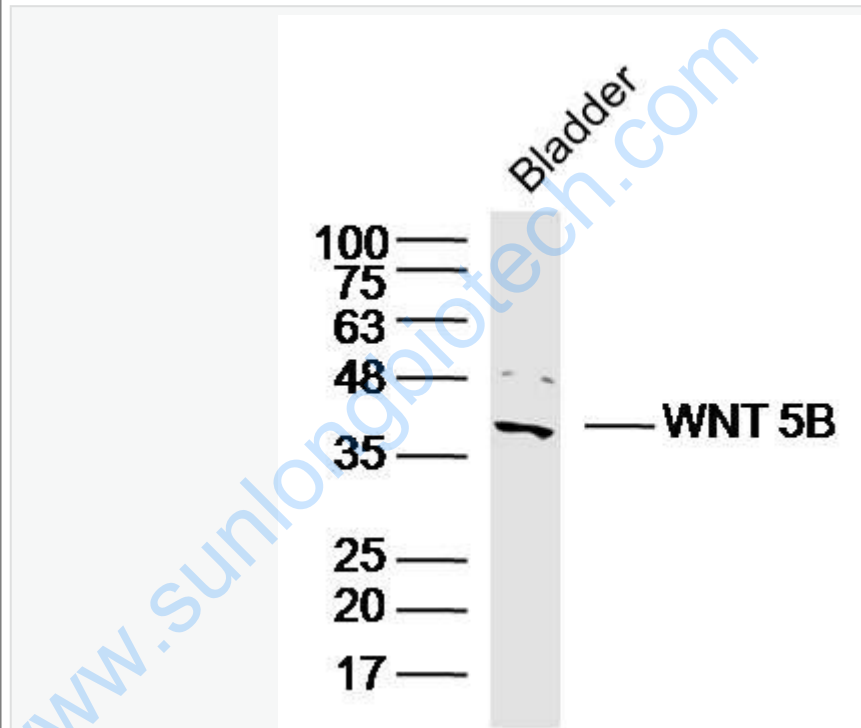
[Unigene: 58724](#) Rat

[Unigene: 389](#) Zebrafish

**Important Note:**

This product as supplied is intended for research use only, not for use in human, therapeutic or diagnostic applications.

Picture:



Sample: Bladder (Mouse) Lysate at 40 ug

Primary: Anti- WNT 5B(SL8010R) at 1/300 dilution

Secondary: IRDye800CW Goat Anti-Rabbit IgG at 1/20000 dilution

Predicted band size: 38kD

Observed band size: 38kD