



Rabbit Anti-CLDND2 antibody

SL8014R

Product Name:	CLDND2
Chinese Name:	膜蛋白CLDND2抗体
Alias:	Claudin domain containing 2; Claudin domain containing protein 2; PMP22CD.
Organism Species:	Rabbit
Clonality:	Polyclonal
React Species:	Human,Mouse,Rat,Pig,Cow,Sheep,
Applications:	WB=1:500-2000ELISA=1:500-1000IHC-P=1:400-800IHC-F=1:400-800IF=1:100-500 (Paraffin sections need antigen repair) not yet tested in other applications. optimal dilutions/concentrations should be determined by the end user.
Molecular weight:	18kDa
Cellular localization:	The cell membrane
Form:	Lyophilized or Liquid
Concentration:	1mg/ml
immunogen:	KLH conjugated synthetic peptide derived from human CLDND2:101-167/167
Lsotype:	IgG
Purification:	affinity purified by Protein A
Storage Buffer:	0.01M TBS(pH7.4) with 1% BSA, 0.03% Proclin300 and 50% Glycerol.
Storage:	Store at -20 °C for one year. Avoid repeated freeze/thaw cycles. The lyophilized antibody is stable at room temperature for at least one month and for greater than a year when kept at -20°C. When reconstituted in sterile pH 7.4 0.01M PBS or diluent of antibody the antibody is stable for at least two weeks at 2-4 °C.
PubMed:	PubMed
Product Detail:	<p>CLDND2 belongs to the PMP-22/EMP/MP20 family of proteins. At present the molecular function is unknown.</p> <p>Subcellular Location: Membrane; Multi-pass membrane protein (Potential).</p> <p>Similarity:</p>

Belongs to the PMP-22/EMP/MP20 family.

SWISS:
Q8NHS1

Gene ID:
125875

Database links:

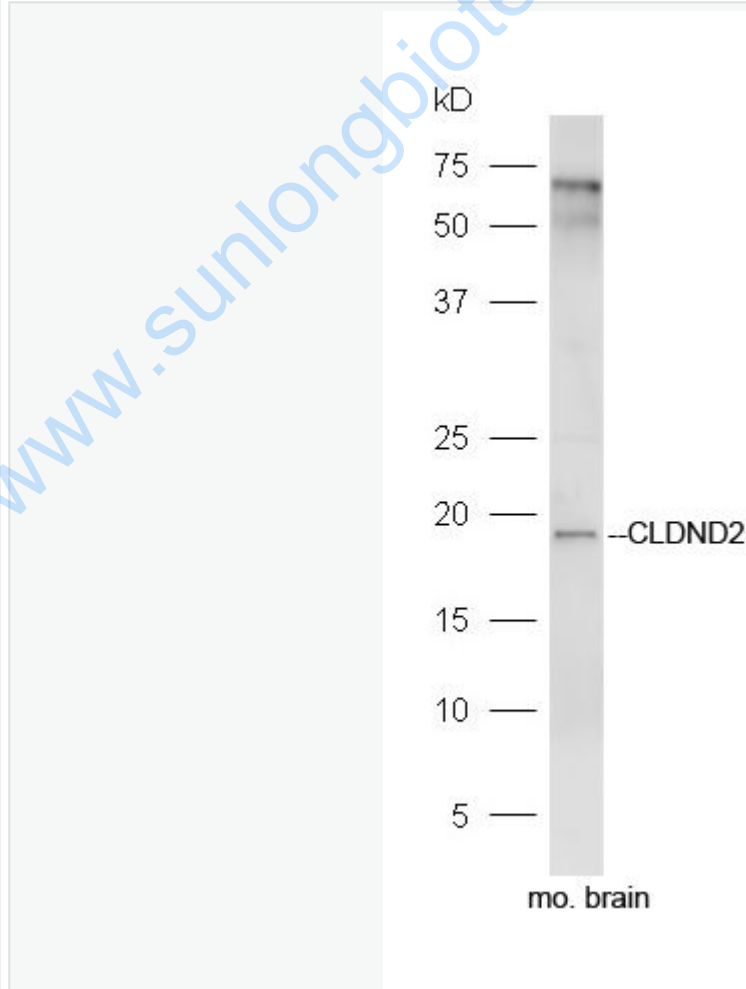
[Entrez Gene: 125875](#)Human

[SwissProt: Q8NHS1](#)Human

Important Note:

This product as supplied is intended for research use only, not for use in human, therapeutic or diagnostic applications.

Picture:



Sample:

brain (Mouse) Lysate at 40 ug

Primary: Anti-CLDND2 (SL8014R) at 1/300 dilution

Secondary: IRDye800CW Goat Anti-Rabbit IgG at 1/20000 dilution

Predicted band size: 18 kD

Observed band size: 18 kD

www.sunlongbiotech.com