



## Rabbit Anti-CLLD7 antibody

SL8015R

<b>Product Name:</b>	CLLD7
<b>Chinese Name:</b>	鸟嘌呤核苷酸交换因子CLLD7抗体
<b>Alias:</b>	RCC1 and BTB domain-containing protein 1; Chronic lymphocytic leukemia deletion region gene 7 protein; CLL deletion region gene 7 protein; Regulator of chromosome condensation and BTB domain-containing protein 1; RCBT1_HUMAN.
<b>Organism Species:</b>	Rabbit
<b>Clonality:</b>	Polyclonal
<b>React Species:</b>	Human,Mouse,Rat,Chicken,Dog,Pig,Cow,Horse,Sheep,
<b>Applications:</b>	ELISA=1:500-1000IHC-P=1:400-800IHC-F=1:400-800IF=1:100-500 (Paraffin sections need antigen repair) not yet tested in other applications. optimal dilutions/concentrations should be determined by the end user.
<b>Molecular weight:</b>	58-60kDa
<b>Cellular localization:</b>	The nucleus
<b>Form:</b>	Lyophilized or Liquid
<b>Concentration:</b>	1mg/ml
<b>immunogen:</b>	KLH conjugated synthetic peptide derived from human CLLD7:481-531/531
<b>Lsotype:</b>	IgG
<b>Purification:</b>	affinity purified by Protein A
<b>Storage Buffer:</b>	0.01M TBS(pH7.4) with 1% BSA, 0.03% Proclin300 and 50% Glycerol.
<b>Storage:</b>	Store at -20 °C for one year. Avoid repeated freeze/thaw cycles. The lyophilized antibody is stable at room temperature for at least one month and for greater than a year when kept at -20°C. When reconstituted in sterile pH 7.4 0.01M PBS or diluent of antibody the antibody is stable for at least two weeks at 2-4 °C.
<b>PubMed:</b>	<a href="#">PubMed</a>
<b>Product Detail:</b>	This gene encodes a protein with an N-terminal RCC1 domain and a C-terminal BTB (broad complex, tramtrack and bric-a-brac) domain. In rat, over-expression of this gene in vascular smooth muscle cells induced cellular hypertrophy. In rat, the C-terminus of RCBTB1 interacts with the angiotensin II receptor-1A. In humans, this gene maps to a region of chromosome 13q that is frequently deleted in B-cell chronic lymphocytic

leukemia and other lymphoid malignancies. [provided by RefSeq, Jul 2008].

**Function:**

May be involved in cell cycle regulation by chromatin remodeling.

**Subcellular Location:**

Nucleus (Potential).

**Tissue Specificity:**

Ubiquitously expressed.

**Similarity:**

Contains 2 BTB (POZ) domains.

Contains 6 RCC1 repeats.

**SWISS:**

Q8NDN9

**Gene ID:**

55213

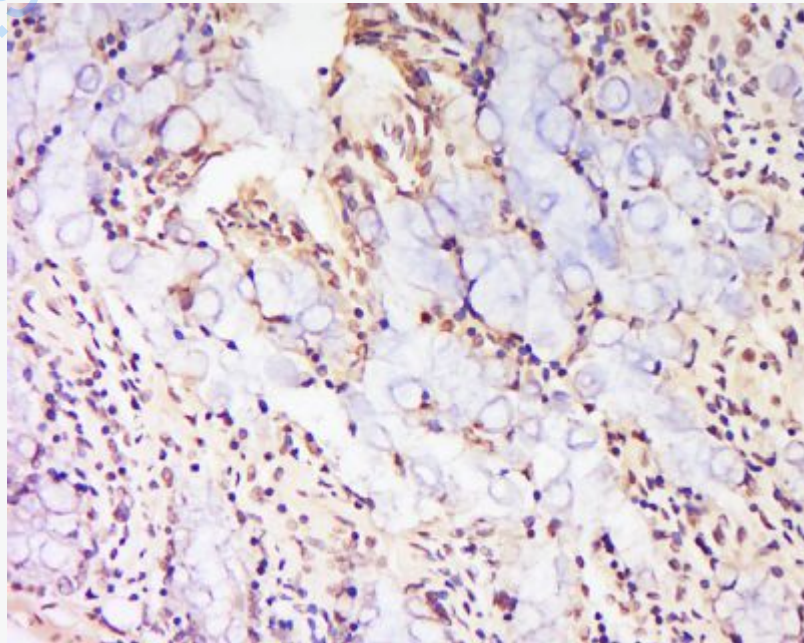
**Database links:**

UniProtKB/Swiss-Prot: Q8NDN9.1

**Important Note:**

This product as supplied is intended for research use only, not for use in human, therapeutic or diagnostic applications.

**Picture:**



Tissue/cell: Rat intestine tissue; 4% Paraformaldehyde-fixed and paraffin-embedded;  
Antigen retrieval: citrate buffer ( 0.01M, pH 6.0 ), Boiling bathing for 15min; Block  
endogenous peroxidase by 3% Hydrogen peroxide for 30min; Blocking buffer  
(normal goat serum,C-0005) at 37°C for 20 min;  
Incubation: Anti-CLLD7 Polyclonal Antibody, Unconjugated(SL8015R) 1:200,  
overnight at 4°C, followed by conjugation to the secondary antibody(SP-0023) and  
DAB(C-0010) staining

[www.sunlongbiotech.com](http://www.sunlongbiotech.com)