



Rabbit Anti-CKLFH3 antibody

SL8021R

Product Name:	CKLFH3
Chinese Name:	趋化素样因子超家族成员3抗体
Alias:	BNAS2; Chemokine like factor super family 3; Chemokine like factor superfamily member 3; CKLF like MARVEL transmembrane domain containing 3; CKLF like MARVEL transmembrane domain containing protein 3; CKLFSF3; CMTM 3; CMTM3; MGC51956; AI413895; FLJ31762; 9430096L06Rik; CKLF3_HUMAN.
Organism Species:	Rabbit
Clonality:	Polyclonal
React Species:	Human,Mouse,Rat,Dog,Cow,Sheep,
Applications:	WB=1:500-2000ELISA=1:500-1000IHC-P=1:400-800IHC-F=1:400-800IF=1:100-500 (Paraffin sections need antigen repair) not yet tested in other applications. optimal dilutions/concentrations should be determined by the end user.
Molecular weight:	20kDa
Cellular localization:	The cell membrane
Form:	Lyophilized or Liquid
Concentration:	1mg/ml
immunogen:	KLH conjugated synthetic peptide derived from human CKLFH3/CMTM3:61-150/182
Lsotype:	IgG
Purification:	affinity purified by Protein A
Storage Buffer:	0.01M TBS(pH7.4) with 1% BSA, 0.03% Proclin300 and 50% Glycerol.
Storage:	Store at -20 °C for one year. Avoid repeated freeze/thaw cycles. The lyophilized antibody is stable at room temperature for at least one month and for greater than a year when kept at -20°C. When reconstituted in sterile pH 7.4 0.01M PBS or diluent of antibody the antibody is stable for at least two weeks at 2-4 °C.
PubMed:	PubMed
Product Detail:	This gene belongs to the chemokine-like factor gene superfamily, a novel family that is similar to the chemokine and the transmembrane 4 superfamilies of signaling molecules. This gene is one of several chemokine-like factor genes located in a cluster on chromosome 16. Alternatively spliced transcript variants containing different 5' UTRs,

but encoding the same protein, have been identified. [provided by RefSeq, Jul 2008].

Subcellular Location:

Membrane; Multi-pass membrane protein.

Tissue Specificity:

Expressed in the leukocytes, placenta and testis.

Similarity:

Belongs to the chemokine-like factor family.

Contains 1 MARVEL domain.

SWISS:

Q96MX0

Gene ID:

123920

Database links:

[Entrez Gene: 123920](#)Human

[Entrez Gene: 68119](#)Mouse

[Omir: 607886](#)Human

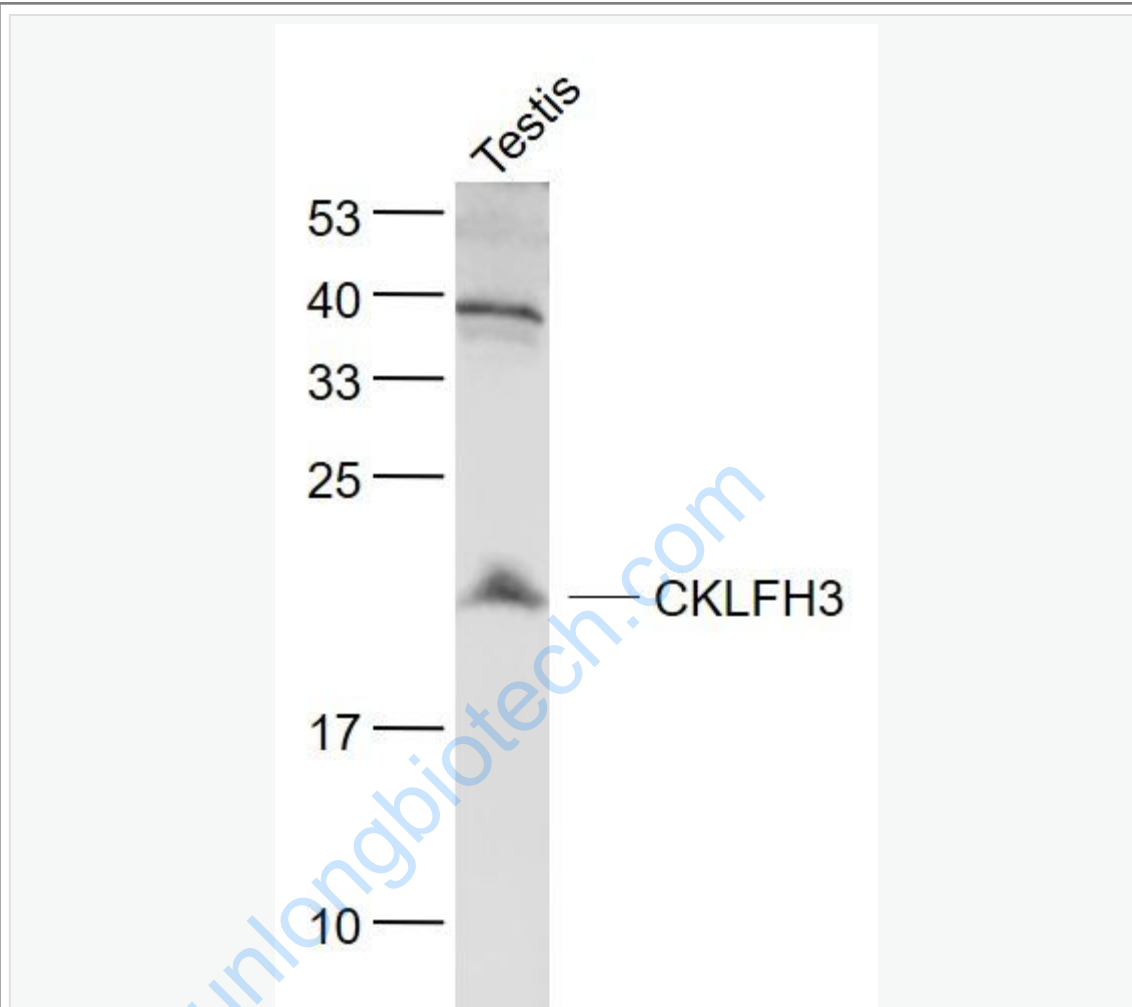
[SwissProt: Q96MX0](#)Human

[SwissProt: Q99LJ5](#)Mouse

Important Note:

This product as supplied is intended for research use only, not for use in human, therapeutic or diagnostic applications.

Picture:



Sample:

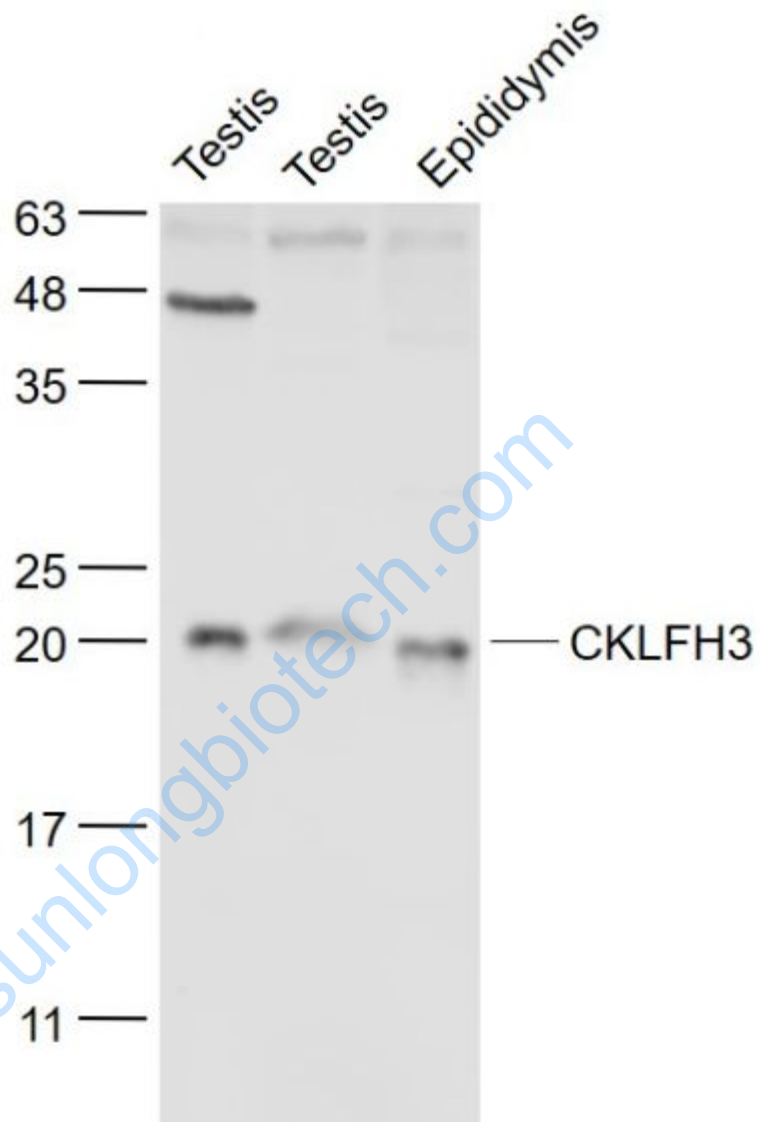
Testis (Mouse) Lysate at 40 ug

Primary: Anti- CKLFH3 (SL8021R) at 1/1000 dilution

Secondary: IRDye800CW Goat Anti-Rabbit IgG at 1/20000 dilution

Predicted band size: 20 kD

Observed band size: 20 kD



Sample:

Testis(Mouse) Lysate at 40 ug

Testis(Rat) Lysate at 40 ug

Epididymis (Mouse) Lysate at 40 ug

Primary: Anti- CKLFH3 (SL8021R) at 1/1000 dilution

Secondary: IRDye800CW Goat Anti-Rabbit IgG at 1/20000 dilution

Predicted band size: 20 kD

	Observed band size: 20 kD
--	---------------------------

www.sunlongbiotech.com