



Rabbit Anti-CKLFH8 antibody

SL8024R

Product Name:	CKLFH8
Chinese Name:	趋化素样因子超家族成员8抗体
Alias:	Cklfsf8; Chemokine like factor super family member 8; CKLF like MARVEL transmembrane domain containing 8; CKLFSF8 V2; CMTM 8; CMTM-8; CMTM8; CKLF8_HUMAN.
Organism Species:	Rabbit
Clonality:	Polyclonal
React Species:	Human,Mouse,Rat,Chicken,Dog,Cow,Horse,Rabbit,
Applications:	ELISA=1:500-1000IHC-P=1:400-800IHC-F=1:400-800IF=1:100-500 (Paraffin sections need antigen repair) not yet tested in other applications. optimal dilutions/concentrations should be determined by the end user.
Molecular weight:	20kDa
Cellular localization:	The nucleuscytoplasmicThe cell membrane
Form:	Lyophilized or Liquid
Concentration:	1mg/ml
immunogen:	KLH conjugated synthetic peptide derived from human CKLFH8:121-173/173
Lsotype:	IgG
Purification:	affinity purified by Protein A
Storage Buffer:	0.01M TBS(pH7.4) with 1% BSA, 0.03% Proclin300 and 50% Glycerol.
Storage:	Store at -20 °C for one year. Avoid repeated freeze/thaw cycles. The lyophilized antibody is stable at room temperature for at least one month and for greater than a year when kept at -20°C. When reconstituted in sterile pH 7.4 0.01M PBS or diluent of antibody the antibody is stable for at least two weeks at 2-4 °C.
PubMed:	PubMed
Product Detail:	This gene belongs to the chemokine-like factor gene superfamily, a novel family that is similar to the chemokine and the transmembrane 4 superfamilies. This gene is one of several chemokine-like factor genes located in a cluster on chromosome 3. This gene is widely expressed in many tissues, but the exact function of the encoded protein is unknown. [provided by RefSeq, Jul 2008].

Subcellular Location:

Isoform 1: Membrane; Multi-pass membrane protein.

Isoform 2: Cytoplasm. Nucleus.

Tissue Specificity:

Highly expressed in liver and pancreas.

Similarity:

Belongs to the chemokine-like factor family.

Contains 1 MARVEL domain.

SWISS:

Q8IZV2

Gene ID:

152189

Database links:

[Entrez Gene: 152189](#)Human

[Entrez Gene: 70031](#)Mouse

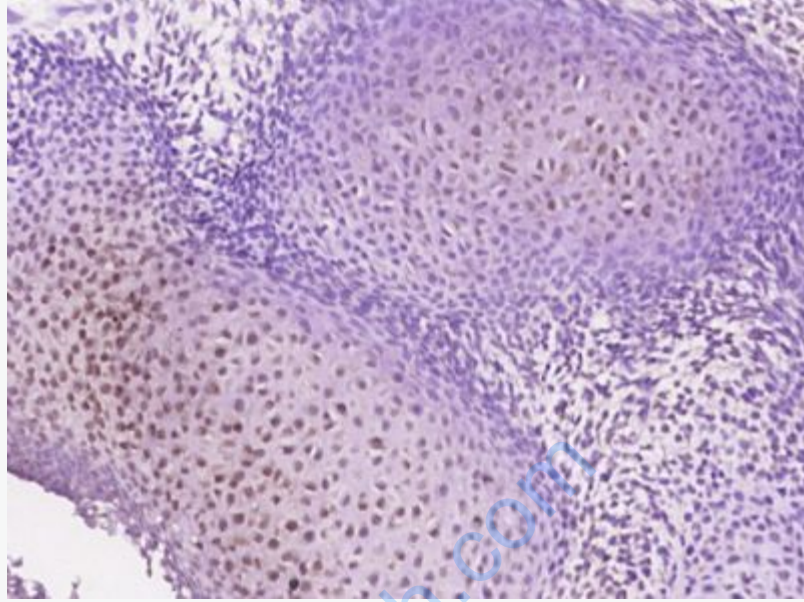
[Omir: 607891](#)Human

[SwissProt: Q8IZV2](#)Human

[SwissProt: Q9CZR4](#)Mouse

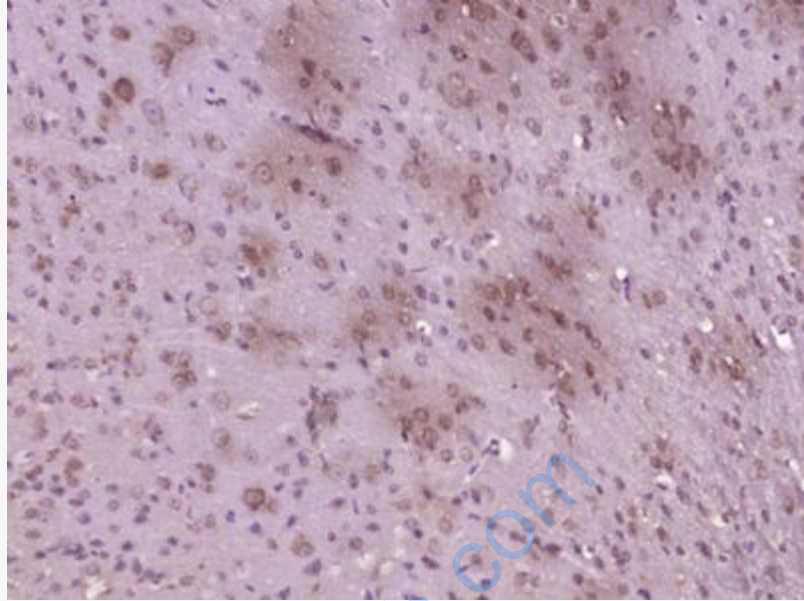
Important Note:

This product as supplied is intended for research use only, not for use in human, therapeutic or diagnostic applications.



Picture:

Paraformaldehyde-fixed, paraffin embedded (Mouse embryo); Antigen retrieval by boiling in sodium citrate buffer (pH6.0) for 15min; Block endogenous peroxidase by 3% hydrogen peroxide for 20 minutes; Blocking buffer (normal goat serum) at 37°C for 30min; Antibody incubation with (CKLFH8) Polyclonal Antibody, Unconjugated (SL8024R) at 1:400 overnight at 4°C, followed by operating according to SP Kit(Rabbit) (sp-0023) instructions and DAB staining.



Paraformaldehyde-fixed, paraffin embedded (Mouse brain); Antigen retrieval by boiling in sodium citrate buffer (pH6.0) for 15min; Block endogenous peroxidase by 3% hydrogen peroxide for 20 minutes; Blocking buffer (normal goat serum) at 37°C for 30min; Antibody incubation with (CKLFH8) Polyclonal Antibody, Unconjugated (SL8024R) at 1:400 overnight at 4°C, followed by operating according to SP Kit(Rabbit) (sp-0023) instructions and DAB staining.