



## Rabbit Anti-CKLFH6 antibody

SL8025R

<b>Product Name:</b>	CKLFH6
<b>Chinese Name:</b>	趋化素样因子超家族成员6抗体
<b>Alias:</b>	chemokine like factor super family 6; chemokine like factor superfamily 6; chemokine like factor superfamily member 6; Chemokine-like factor superfamily member 6; CKLF like MARVEL transmembrane domain containing 6; CKLF-like MARVEL transmembrane domain-containing protein 6; CKLF6_HUMAN; CKLFSF6; Cmtm6 ; Da2 17; LRRGT00102; PRO2219.
<b>Organism Species:</b>	Rabbit
<b>Clonality:</b>	Polyclonal
<b>React Species:</b>	Human,Mouse,Rat,Rabbit,Sheep,
<b>Applications:</b>	ELISA=1:500-1000IHC-P=1:400-800IHC-F=1:400-800IF=1:100-500 (Paraffin sections need antigen repair) not yet tested in other applications. optimal dilutions/concentrations should be determined by the end user.
<b>Molecular weight:</b>	20kDa
<b>Cellular localization:</b>	The cell membrane
<b>Form:</b>	Lyophilized or Liquid
<b>Concentration:</b>	1mg/ml
<b>immunogen:</b>	KLH conjugated synthetic peptide derived from human CKLFH6:101-183/183
<b>Lsotype:</b>	IgG
<b>Purification:</b>	affinity purified by Protein A
<b>Storage Buffer:</b>	0.01M TBS(pH7.4) with 1% BSA, 0.03% Proclin300 and 50% Glycerol.
<b>Storage:</b>	Store at -20 °C for one year. Avoid repeated freeze/thaw cycles. The lyophilized antibody is stable at room temperature for at least one month and for greater than a year when kept at -20°C. When reconstituted in sterile pH 7.4 0.01M PBS or diluent of antibody the antibody is stable for at least two weeks at 2-4 °C.
<b>PubMed:</b>	<a href="#">PubMed</a>
<b>Product Detail:</b>	his gene belongs to the chemokine-like factor gene superfamily, a novel family that is similar to the chemokine and transmembrane 4 superfamilies. This gene is one of several chemokine-like factor genes located in a cluster on chromosome 3. This gene is widely

expressed in many tissues, but the exact function of the encoded protein is unknown. [provided by RefSeq, Jul 2008].

**Subcellular Location:**

Membrane; Multi-pass membrane protein.

**Tissue Specificity:**

Expressed in the leukocytes, placenta and testis.

**Similarity:**

Belongs to the chemokine-like factor family.

Contains 1 MARVEL domain.

**SWISS:**

Q9NX76

**Gene ID:**

54918

**Database links:**

[Entrez Gene: 54918](#)Human

[Omid: 607889](#)Human

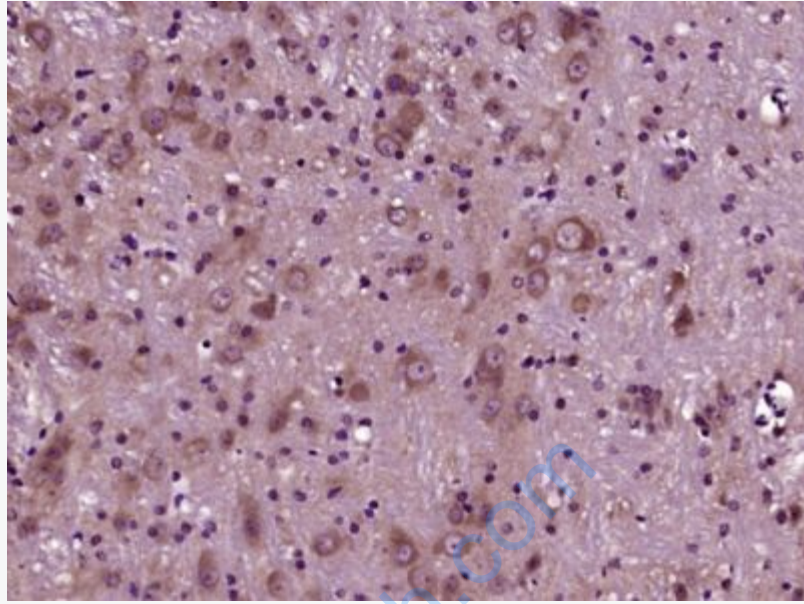
[SwissProt: Q9NX76](#)Human

[Unigene: 380627](#)Human

[Unigene: 440494](#)Human

**Important Note:**

This product as supplied is intended for research use only, not for use in human, therapeutic or diagnostic applications.



**Picture:**

Paraformaldehyde-fixed, paraffin embedded (Mouse cerebellum); Antigen retrieval by boiling in sodium citrate buffer (pH6.0) for 15min; Block endogenous peroxidase by 3% hydrogen peroxide for 20 minutes; Blocking buffer (normal goat serum) at 37°C for 30min; Antibody incubation with (CKLFH6) Polyclonal Antibody, Unconjugated (SL8025R) at 1:400 overnight at 4°C, followed by operating according to SP Kit(Rabbit) (sp-0023) instructions and DAB staining.