



Rabbit Anti-GABARAPL1 antibody

SL8035R

| | |
|-------------------------------|---|
| Product Name: | GABARAPL1 |
| Chinese Name: | γ 氨基丁酸受体相关蛋白样1抗体 |
| Alias: | APG8 like; APG8L; ATG8; ATG8L; Early estrogen regulated protein; GABA; GABA(A) receptor associated protein like 1; GABARAPL1; Gamma aminobutyric acid receptor associated protein like 1; GEC 1; GEC1; Glandular epithelial cell protein 1; GBRL1_HUMAN. |
| Organism Species: | Rabbit |
| Clonality: | Polyclonal |
| React Species: | Human,Mouse,Rat,Dog,Pig,Cow,Rabbit, |
| Applications: | ELISA=1:500-1000IHC-P=1:400-800IHC-F=1:400-800IF=1:100-500 (Paraffin sections need antigen repair) not yet tested in other applications. optimal dilutions/concentrations should be determined by the end user. |
| Molecular weight: | 14kDa |
| Cellular localization: | cytoplasmicThe cell membrane |
| Form: | Lyophilized or Liquid |
| Concentration: | 1mg/ml |
| immunogen: | KLH conjugated synthetic peptide derived from human GABARAPL1:41-117/117 |
| Lsotype: | IgG |
| Purification: | affinity purified by Protein A |
| Storage Buffer: | 0.01M TBS(pH7.4) with 1% BSA, 0.03% Proclin300 and 50% Glycerol. |
| Storage: | Store at -20 °C for one year. Avoid repeated freeze/thaw cycles. The lyophilized antibody is stable at room temperature for at least one month and for greater than a year when kept at -20°C. When reconstituted in sterile pH 7.4 0.01M PBS or diluent of antibody the antibody is stable for at least two weeks at 2-4 °C. |
| PubMed: | PubMed |
| Product Detail: | GABARAPL1 belongs to the MAP1 LC3 family. It increases cell surface expression of kappa type opioid receptor through facilitating anterograde intracellular trafficking of the receptor. |

Subunit:

Interacts with GABRG2 and beta-tubulin. Interacts with OPRK1.

Subcellular Location:

Cytoplasm, cytoskeleton. Membrane. Endoplasmic reticulum. Golgi apparatus.

Tissue Specificity:

Ubiquitous. Expressed at very high levels in the brain, heart, peripheral blood leukocytes, liver, kidney, placenta and skeletal muscle. Expressed at very low levels in thymus and small intestine.

Similarity:

Belongs to the MAP1 LC3 family.

SWISS:

Q9H0R8

Gene ID:

23710

Database links:

[Entrez Gene: 338472](#)Cow

[Entrez Gene: 612919](#)Dog

[Entrez Gene: 100135524](#)Guinea pig

[Entrez Gene: 23710](#)Human

[Entrez Gene: 57436](#)Mouse

[Entrez Gene: 100462751](#)Pig

[Entrez Gene: 689161](#)Rat

[Omim: 607420](#)Human

[SwissProt: Q8HYB6](#)Cow

[SwissProt: P60518](#)Guinea pig

[SwissProt: Q9H0R8](#)Human

[SwissProt: Q8R3R8](#)Mouse

[SwissProt: Q0VGK0](#)Rat

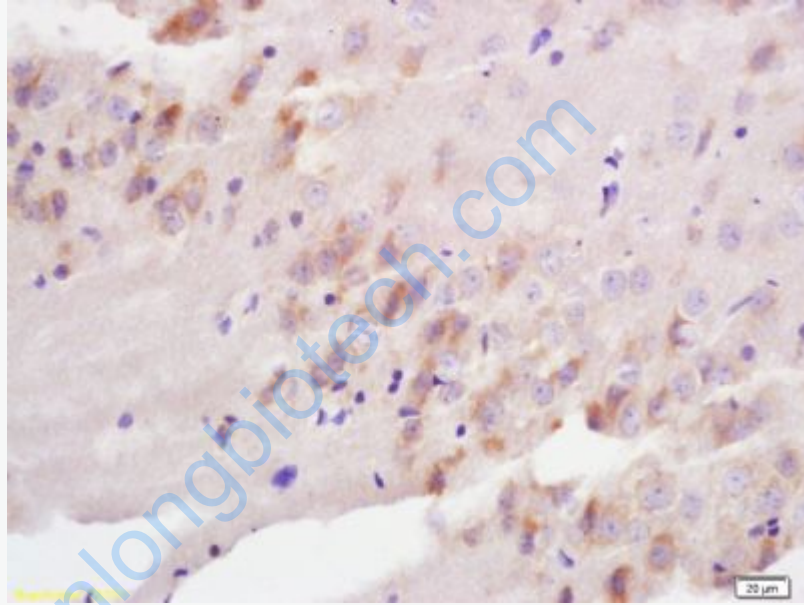
[Unigene: 524250](#)Human

[Unigene: 14638](#)Mouse

[Unigene: 118264](#)Rat

Important Note:

This product as supplied is intended for research use only, not for use in human, therapeutic or diagnostic applications.



Picture:

Tissue/cell: rat brain tissue; 4% Paraformaldehyde-fixed and paraffin-embedded;
Antigen retrieval: citrate buffer (0.01M, pH 6.0), Boiling bathing for 15min; Block endogenous peroxidase by 3% Hydrogen peroxide for 30min; Blocking buffer (normal goat serum,C-0005) at 37°C for 20 min;
Incubation: Anti-GABARAPL1 Polyclonal Antibody, Unconjugated(SL8035R) 1:200, overnight at 4°C, followed by conjugation to the secondary antibody(SP-0023) and DAB(C-0010) staining