



Rabbit Anti-GNL1 antibody

SL8040R

Product Name:	GNL1
Chinese Name:	鸟嘌呤核苷酸Binding protein1抗体
Alias:	Gnl1; GNL1_HUMAN; GTP binding protein HSR1; GTP-binding protein HSR1; Guanine nucleotide binding protein like 1; Guanine nucleotide-binding protein-like 1; HSR1; HSR1 GTP binding protein.
Organism Species:	Rabbit
Clonality:	Polyclonal
React Species:	Human,Mouse,Rat,Dog,Pig,Cow,Horse,Sheep,Monkey,y
Applications:	WB=1:500-2000ELISA=1:500-1000IHC-P=1:400-800IHC-F=1:400-800IF=1:100-500 (Paraffin sections need antigen repair) not yet tested in other applications. optimal dilutions/concentrations should be determined by the end user.
Molecular weight:	69kDa
Cellular localization:	The nucleusExtracellular matrixSecretory protein
Form:	Lyophilized or Liquid
Concentration:	1mg/ml
immunogen:	KLH conjugated synthetic peptide derived from human GNL1:301-400/607
Lsotype:	IgG
Purification:	affinity purified by Protein A
Storage Buffer:	0.01M TBS(pH7.4) with 1% BSA, 0.03% Proclin300 and 50% Glycerol.
Storage:	Store at -20 °C for one year. Avoid repeated freeze/thaw cycles. The lyophilized antibody is stable at room temperature for at least one month and for greater than a year when kept at -20°C. When reconstituted in sterile pH 7.4 0.01M PBS or diluent of antibody the antibody is stable for at least two weeks at 2-4 °C.
PubMed:	PubMed
Product Detail:	The GNL1 gene, identified in the human major histocompatibility complex class I region, shows a high degree of similarity with its mouse counterpart. The GNL1 gene is located less than 2 kb centromeric to HLA-E, in the same transcriptional orientation. GNL1 is telomeric to HLA-B and HLA-C. [provided by RefSeq, Jul 2008].

Function:

Possible regulatory or functional link with the histocompatibility cluster.

Post-translational modifications:

Phosphorylated upon DNA damage, probably by ATM or ATR.

Similarity:

Belongs to the MMR1/HSR1 GTP-binding protein family.
Contains 1 G (guanine nucleotide-binding) domain.

SWISS:

P36915

Gene ID:

2794

Database links:

[Entrez Gene: 2794](#)Human

[Entrez Gene: 309593](#)Rat

[Omim: 143024](#)Human

[SwissProt: P36915](#)Human

[SwissProt: P36916](#)Mouse

[SwissProt: Q6MG06](#)Rat

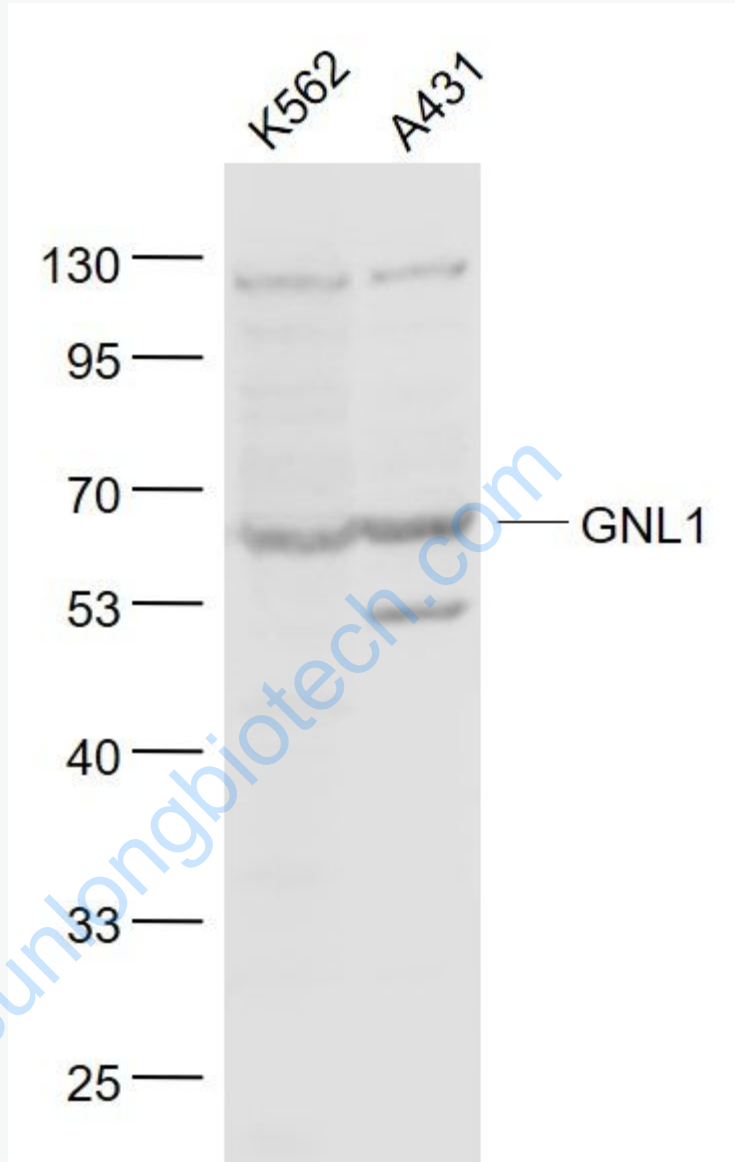
[Unigene: 118354](#)Human

[Unigene: 83147](#)Human

Important Note:

This product as supplied is intended for research use only, not for use in human, therapeutic or diagnostic applications.

Picture:



Sample:

K562(Human) Cell Lysate at 30 ug

A431(Human) Cell Lysate at 30 ug

Primary: Anti- GNL1 (SL8040R) at 1/1000 dilution

Secondary: IRDye800CW Goat Anti-Rabbit IgG at 1/20000 dilution

Predicted band size: 69 kD

	Observed band size: 69 kD
--	---------------------------

www.sunlongbiotech.com