



Rabbit Anti-ENC1 antibody

SL8043R

Product Name:	ENC1
Chinese Name:	外胚层神经皮层蛋白1/KLHL35抗体
Alias:	CCL 28; CCL28; Ectoderm neural cortex protein 1; Ectoderm-neural cortex protein 1; Ectodermal neural cortex (with BTB like domain); ENC 1; ENC-1; ENC1; ENC1_HUMAN; FLJ39259; Kelch like 35; Kelch like 37; Kelch-like protein 37; KLHL 35; KLHL35; KLHL37; NRPB; Nuclear matrix protein NRP/B; Nuclear restricted protein BTB domain like (brain); p53 induced gene 10 protein; p53-induced gene 10 protein; PIG 10; PIG10; TP53I10; Tumor protein p53 inducible protein 10.
Organism Species:	Rabbit
Clonality:	Polyclonal
React Species:	Human,Mouse,Rat,Cow,Horse,Rabbit,Sheep,
Applications:	WB=1:500-2000ELISA=1:500-1000IHC-P=1:400-800IHC-F=1:400-800Flow-Cyt=0.2ug/testIF=1:100-500 (Paraffin sections need antigen repair) not yet tested in other applications. optimal dilutions/concentrations should be determined by the end user.
Molecular weight:	66kDa
Cellular localization:	The nucleuscytoplasmic
Form:	Lyophilized or Liquid
Concentration:	1mg/ml
immunogen:	KLH conjugated synthetic peptide derived from human ENC1:241-300/589
Lsotype:	IgG
Purification:	affinity purified by Protein A
Storage Buffer:	0.01M TBS(pH7.4) with 1% BSA, 0.03% Proclin300 and 50% Glycerol.
Storage:	Store at -20 °C for one year. Avoid repeated freeze/thaw cycles. The lyophilized antibody is stable at room temperature for at least one month and for greater than a year when kept at -20°C. When reconstituted in sterile pH 7.4 0.01M PBS or diluent of antibody the antibody is stable for at least two weeks at 2-4 °C.
PubMed:	PubMed
Product Detail:	Actin-binding protein involved in the regulation of neuronal process formation and in differentiation of neural crest cells. May be down-regulated in neuroblastoma tumors.

Substrate-specific adapter of an E3 ubiquitin-protein ligase complex which mediates the ubiquitination and subsequent proteasomal degradation of target proteins.

Tissue specificity: Detected in fetal brain tissue, moderate expression in fetal heart, lung and kidney. Highly expressed in adult brain, particularly high in the hippocampus and amygdala, and spinal chord. Detectable in adult pancreas.

Function:

Actin-binding protein involved in the regulation of neuronal process formation and in differentiation of neural crest cells. May be down-regulated in neuroblastoma tumors. Substrate-specific adapter of an E3 ubiquitin-protein ligase complex which mediates the ubiquitination and subsequent proteasomal degradation of target proteins.

Subunit:

Binds to RB1. Hypophosphorylated RB1 associates with ENC1 during neuronal differentiation, while hyperphosphorylated RB1 associates with ENC1 in undifferentiating cells. Part of a complex that contains CUL3, RBX1 and ENC1.

Subcellular Location:

Nucleus matrix. Cytoplasm, cytoskeleton.

Tissue Specificity:

Detected in fetal brain tissue, moderate expression in fetal heart, lung and kidney. Highly expressed in adult brain, particularly high in the hippocampus and amygdala, and spinal chord. Detectable in adult pancreas.

Post-translational modifications:

Ubiquitinated and probably targeted for proteasome-independent degradation.

Similarity:

Contains 1 BTB (POZ) domain.
Contains 6 Kelch repeats.

SWISS:

O14682

Gene ID:

8507

Database links:

[Entrez Gene: 8507](#)Human

[Entrez Gene: 13803](#)Mouse

[Entrez Gene: 294674](#)Rat

[Omim: 605173](#)Human

[SwissProt: O14682](#)Human

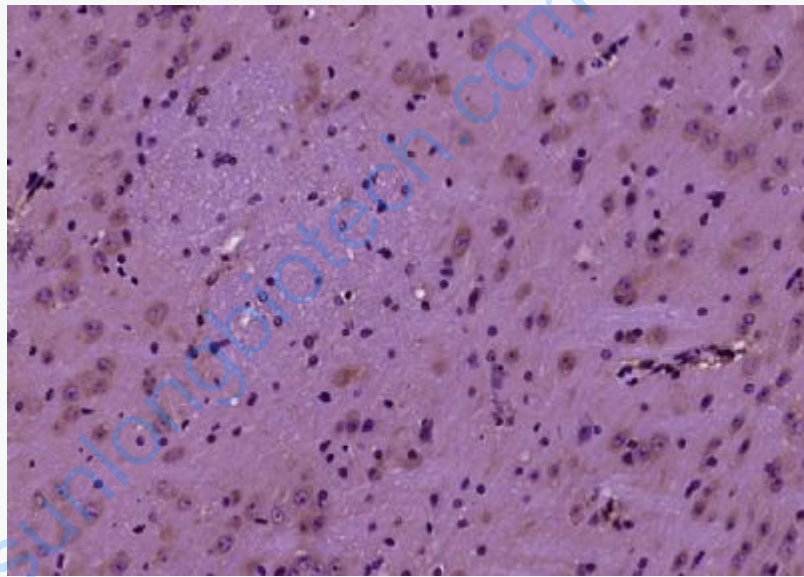
[SwissProt: O35709](#)Mouse

[Unigene: 104925](#)Human

[Unigene: 241073](#)Mouse

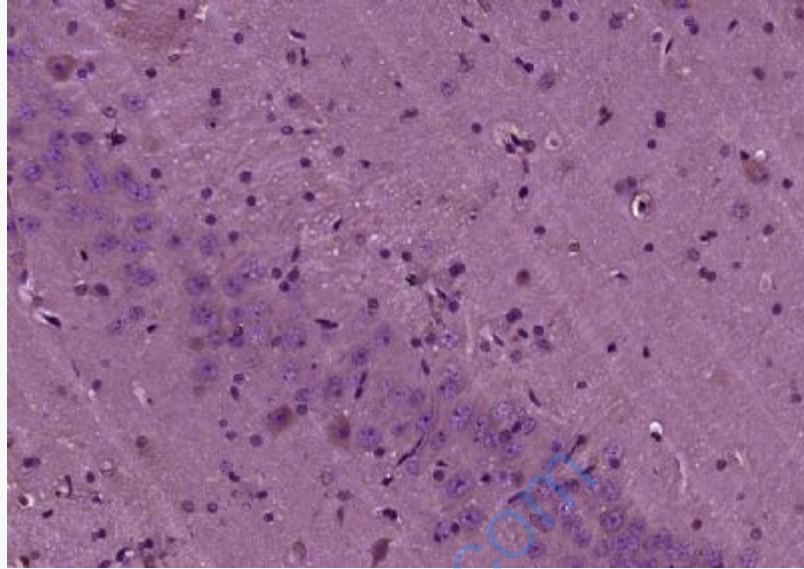
Important Note:

This product as supplied is intended for research use only, not for use in human, therapeutic or diagnostic applications.

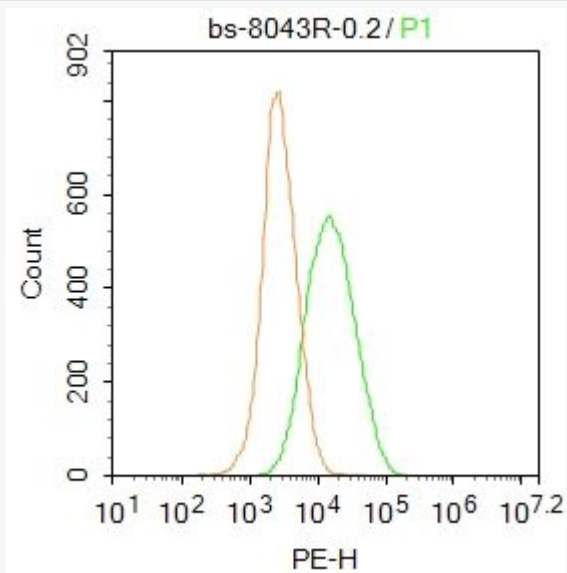


Picture:

Paraformaldehyde-fixed, paraffin embedded (Mouse brain); Antigen retrieval by boiling in sodium citrate buffer (pH6.0) for 15min; Block endogenous peroxidase by 3% hydrogen peroxide for 20 minutes; Blocking buffer (normal goat serum) at 37°C for 30min; Antibody incubation with (ENC1) Polyclonal Antibody, Unconjugated (SL8043R) at 1:400 overnight at 4°C, followed by operating according to SP Kit(Rabbit) (sp-0023) instructions and DAB staining.



Paraformaldehyde-fixed, paraffin embedded (Rat brain); Antigen retrieval by boiling in sodium citrate buffer (pH6.0) for 15min; Block endogenous peroxidase by 3% hydrogen peroxide for 20 minutes; Blocking buffer (normal goat serum) at 37°C for 30min; Antibody incubation with (ENC1) Polyclonal Antibody, Unconjugated (SL8043R) at 1:400 overnight at 4°C, followed by operating according to SP Kit(Rabbit) (sp-0023) instructions and DAB staining.



Blank control: A549.

Primary Antibody (green line): Rabbit Anti-ENC1 antibody (SL8043R)

Dilution: 0.2 μ g /10⁶ cells;

Isotype Control Antibody (orange line): Rabbit IgG .

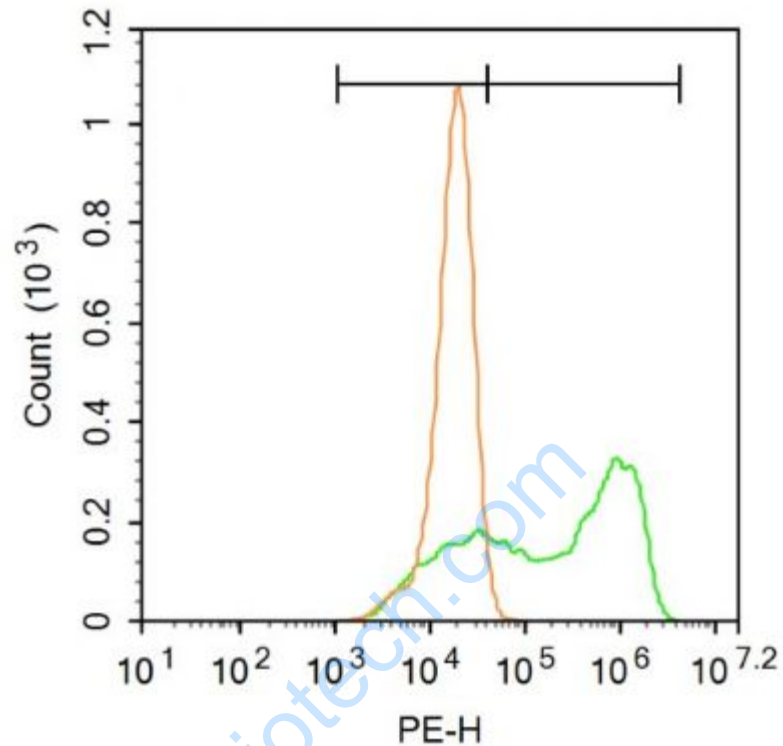
Secondary Antibody : Goat anti-rabbit IgG-PE

Dilution: 1 μ g /test.

Protocol

The cells were fixed with 4% PFA (10min at room temperature)and then permeabilized with 90% ice-cold methanol for 20 min at -20°C. The cells were then incubated in 5%BSA to block non-specific protein-protein interactions for 30 min at room temperature .Cells stained with Primary Antibody for 30 min at room temperature. The secondary antibody used for 40 min at room temperature.

Acquisition of 20,000 events was performed.



Blank control: A549.

Primary Antibody (green line): Rabbit Anti-ENC1 antibody (SL8043R)

Dilution: $1\mu\text{g} / 10^6$ cells;

Isotype Control Antibody (orange line): Rabbit IgG .

Secondary Antibody : Goat anti-rabbit IgG-PE

Dilution: $3\mu\text{g} / \text{test}$.

Protocol

The cells were fixed with 4% PFA (10min at room temperature) and then permeabilized with 90% ice-cold methanol for 20 min at -20°C . The cells were then incubated in 5% BSA to block non-specific protein-protein interactions for 30 min at room temperature. Cells stained with Primary Antibody for 30 min at room temperature. The secondary antibody used for 40 min at room temperature.

	Acquisition of 20,000 events was performed.
--	---

www.sunlongbiotech.com