

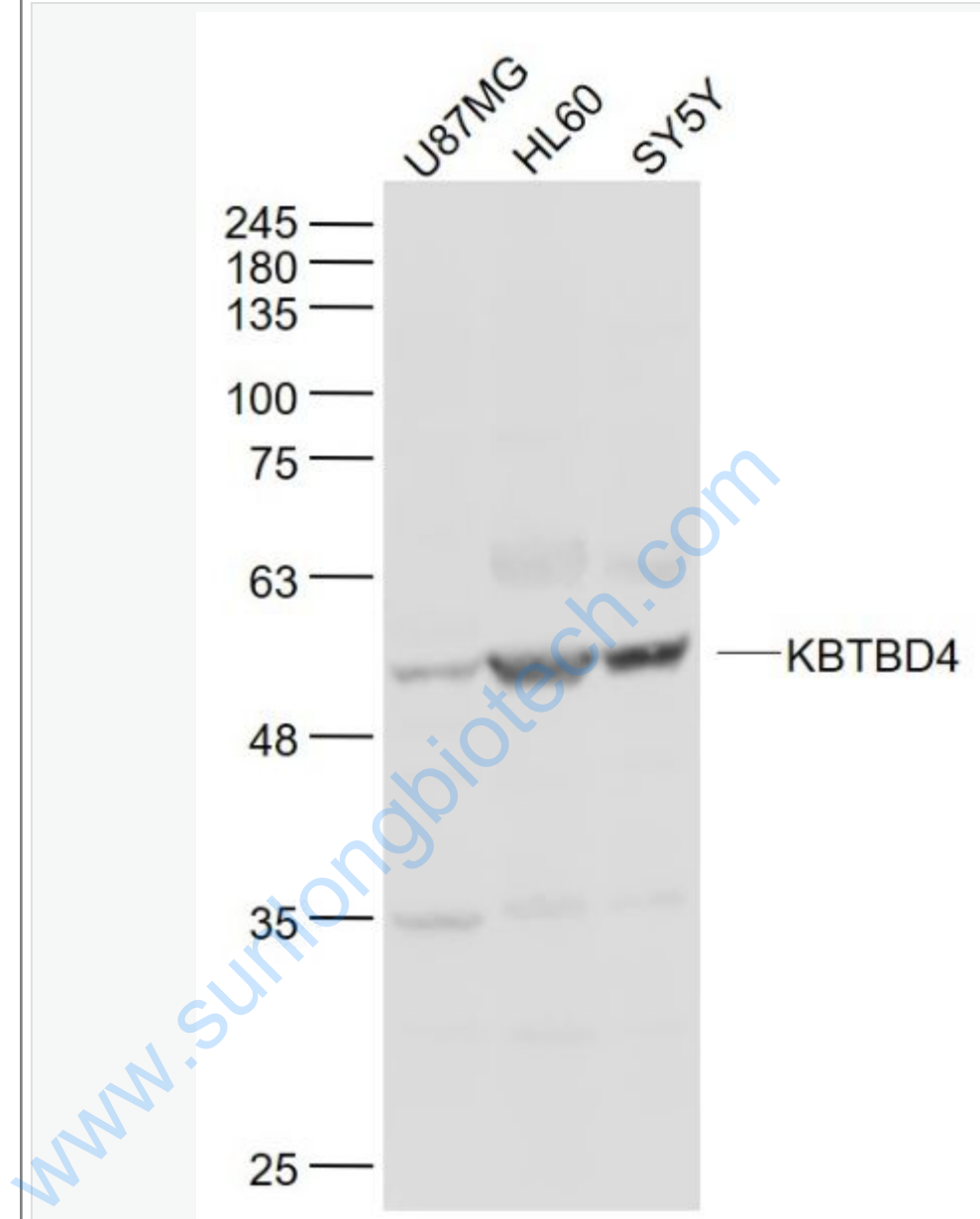


## Rabbit Anti-KBTBD4 antibody

SL8045R

<b>Product Name:</b>	KBTBD4
<b>Chinese Name:</b>	BTB-kelch蛋白家族4抗体
<b>Alias:</b>	BKLHD4; BTB and kelch domain containing 4; BTB and kelch domain-containing protein 4; FLJ10450; HSPC252; KBTB4_HUMAN; KBTBD4; Kelch repeat and BTB domain-containing protein 4.
<b>Organism Species:</b>	Rabbit
<b>Clonality:</b>	Polyclonal
<b>React Species:</b>	Human,Mouse,Rat,Dog,Pig,Cow,Horse,Rabbit,Sheep,
<b>Applications:</b>	WB=1:500-2000ELISA=1:500-1000IHC-P=1:400-800IHC-F=1:400-800IF=1:100-500 (Paraffin sections need antigen repair) not yet tested in other applications. optimal dilutions/concentrations should be determined by the end user.
<b>Molecular weight:</b>	58kDa
<b>Cellular localization:</b>	The nucleuscytoplasmic
<b>Form:</b>	Lyophilized or Liquid
<b>Concentration:</b>	1mg/ml
<b>immunogen:</b>	KLH conjugated synthetic peptide derived from human KBTBD4:201-280/518
<b>Lsotype:</b>	IgG
<b>Purification:</b>	affinity purified by Protein A
<b>Storage Buffer:</b>	0.01M TBS(pH7.4) with 1% BSA, 0.03% Proclin300 and 50% Glycerol.
<b>Storage:</b>	Store at -20 °C for one year. Avoid repeated freeze/thaw cycles. The lyophilized antibody is stable at room temperature for at least one month and for greater than a year when kept at -20°C. When reconstituted in sterile pH 7.4 0.01M PBS or diluent of antibody the antibody is stable for at least two weeks at 2-4 °C.
<b>PubMed:</b>	<a href="#">PubMed</a>
<b>Product Detail:</b>	BTB-kelch蛋白家族参与细胞多种功能,包括转录调节、Cytoskeleton形成、离子通道、蛋白Ubiquitin化、血管形成及Apoptosis等细胞生理活动.

Picture:



Sample:

U87MG(Human) Cell Lysate at 30 ug

HL60(Human) Cell Lysate at 30 ug

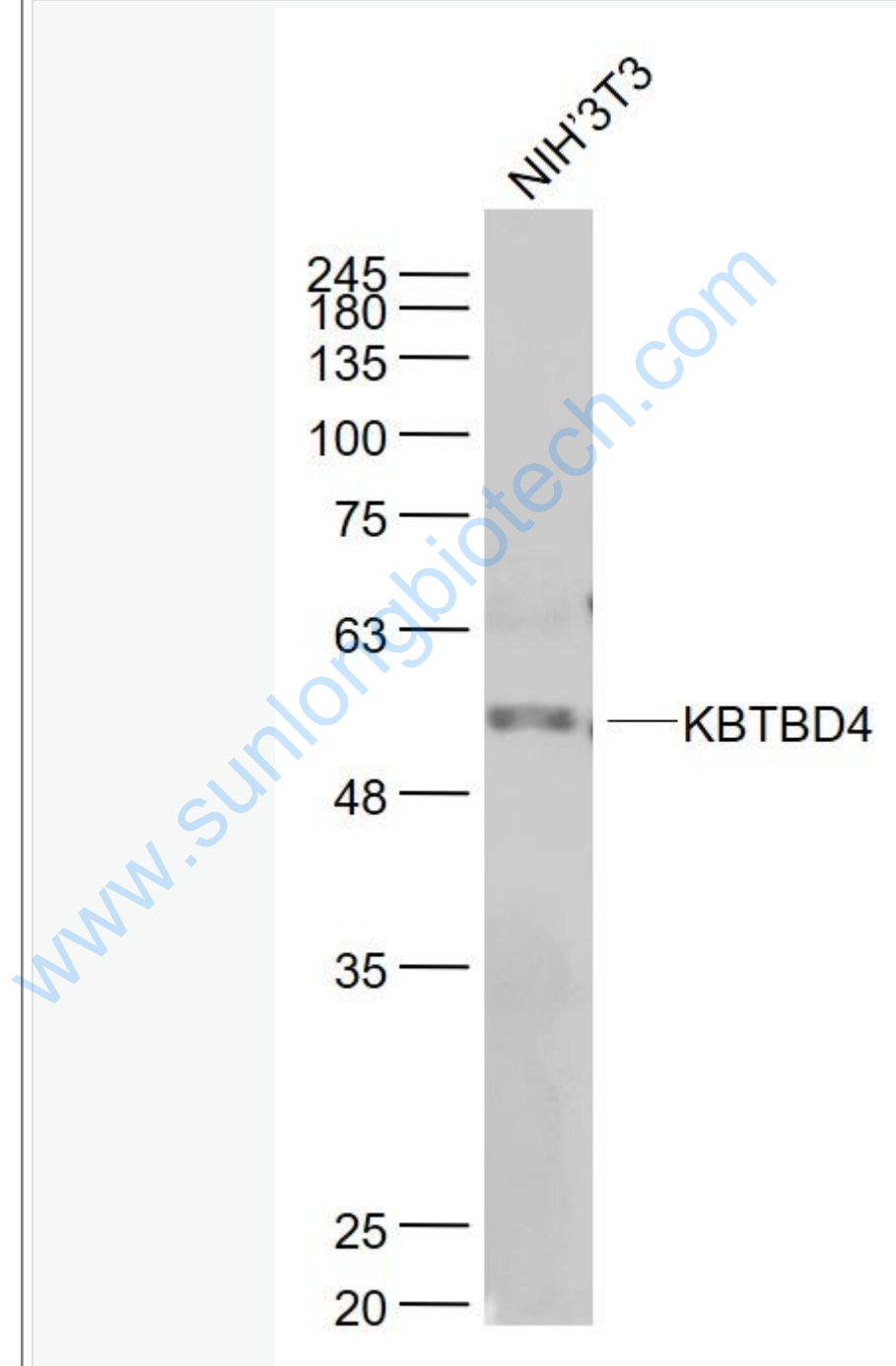
SY5Y(Human) Cell Lysate at 30 ug

Primary: Anti- KBTBD4 (SL8045R) at 1/1000 dilution

Secondary: IRDye800CW Goat Anti-Rabbit IgG at 1/20000 dilution

Predicted band size: 58 kD

Observed band size: 58 kD



Sample:

NIH/3T3(Mouse) Cell Lysate at 30 ug

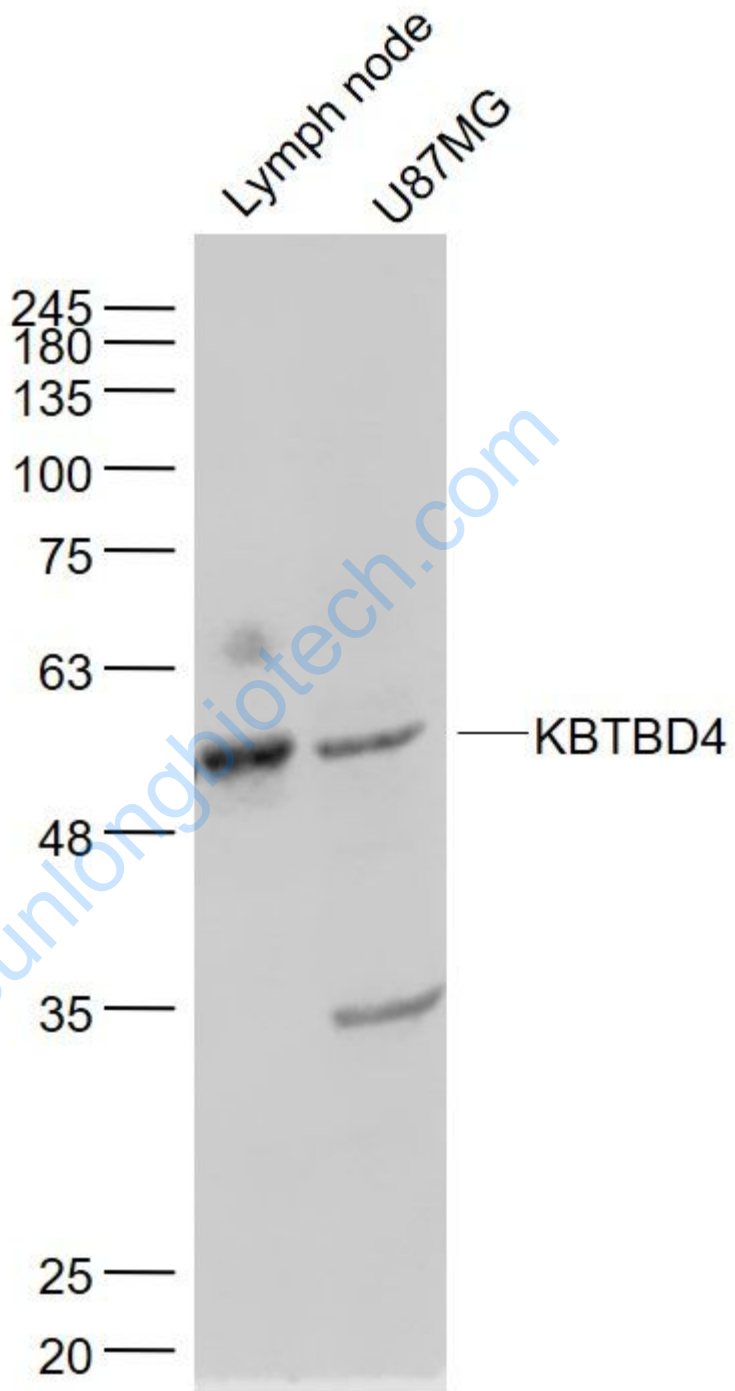
Primary: Anti- KBTBD4 (SL8045R) at 1/1000 dilution

Secondary: IRDye800CW Goat Anti-Rabbit IgG at 1/20000 dilution

Predicted band size: 58 kD

Observed band size: 58 kD

[www.sunlongbiotech.com](http://www.sunlongbiotech.com)



Sample:

Lymph node (Mouse) Lysate at 40 ug

U87MG(Human) Cell Lysate at 30 ug

Primary: Anti- KBTBD4 (SL8045R) at 1/1000 dilution

Secondary: IRDye800CW Goat Anti-Rabbit IgG at 1/20000 dilution

Predicted band size: 58 kD

Observed band size: 58 kD

[www.sunlongbiotech.com](http://www.sunlongbiotech.com)