



Rabbit Anti-KLHL24 antibody

SL8050R

Product Name:	KLHL24
Chinese Name:	Kelch样蛋白24抗体
Alias:	DRE1; FLJ20059; FLJ25796; Kainate receptor interacting protein for GluR6; Kelch like 24 (Drosophila); Kelch like protein 24; KRIP6; OTTHUMP00000211002; OTTHUMP00000212605; Protein DRE1; KLH24_HUMAN.
Organism Species:	Rabbit
Clonality:	Polyclonal
React Species:	Human,Mouse,Rat,Dog,Rabbit,
Applications:	WB=1:500-2000ELISA=1:500-1000IHC-P=1:400-800IHC-F=1:400-800IF=1:100-500 (Paraffin sections need antigen repair) not yet tested in other applications. optimal dilutions/concentrations should be determined by the end user.
Molecular weight:	68kDa
Cellular localization:	The nucleuscytoplasmic
Form:	Lyophilized or Liquid
Concentration:	1mg/ml
immunogen:	KLH conjugated synthetic peptide derived from human KLHL24:1-100/600
Lsotype:	IgG
Purification:	affinity purified by Protein A
Storage Buffer:	0.01M TBS(pH7.4) with 1% BSA, 0.03% Proclin300 and 50% Glycerol.
Storage:	Store at -20 °C for one year. Avoid repeated freeze/thaw cycles. The lyophilized antibody is stable at room temperature for at least one month and for greater than a year when kept at -20°C. When reconstituted in sterile pH 7.4 0.01M PBS or diluent of antibody the antibody is stable for at least two weeks at 2-4 °C.
PubMed:	PubMed
Product Detail:	KLHL24 specifically reduces kainate receptor-mediated currents in hippocampal neurons, most probably by modulating channel properties. Function: Specifically reduces kainate receptor-mediated currents in hippocampal neurons, most

probably by modulating channel properties.

Subunit:

Forms homodimers. Interacts with GRIK2.

Subcellular Location:

Perikaryon. Cell projection, axon. Cytoplasm.

Similarity:

Contains 1 BACK (BTB/Kelch associated) domain.

Contains 1 BTB (POZ) domain.

Contains 6 Kelch repeats.

SWISS:

Q6TFL4

Gene ID:

54800

Database links:

[Entrez Gene: 54800](#)Human

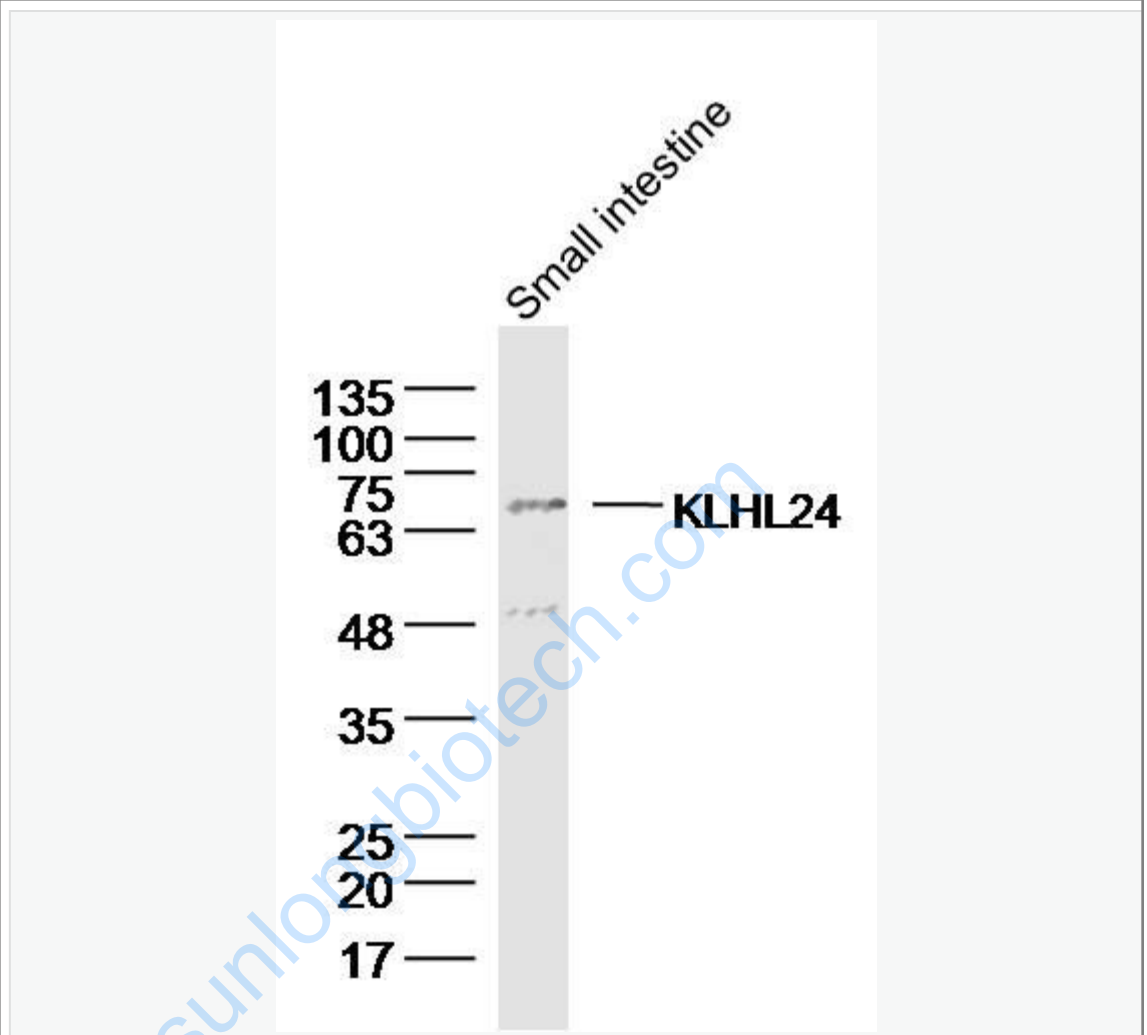
[Oimim: 611295](#)Human

[SwissProt: Q6TFL4](#)Human

Important Note:

This product as supplied is intended for research use only, not for use in human, therapeutic or diagnostic applications.

Picture:



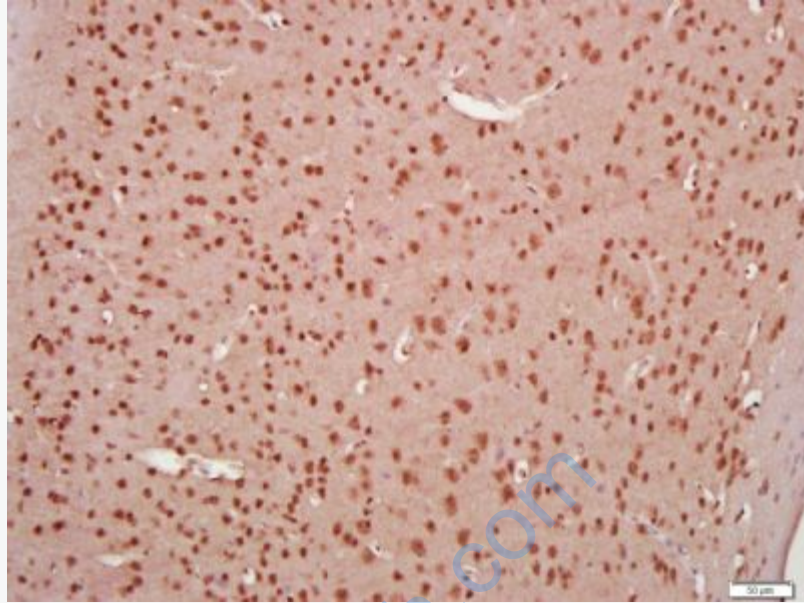
Sample: Small intestine (mouse) Lysate at 40 ug

Primary: Anti- KLHL24(SL8050R) at 1/300 dilution

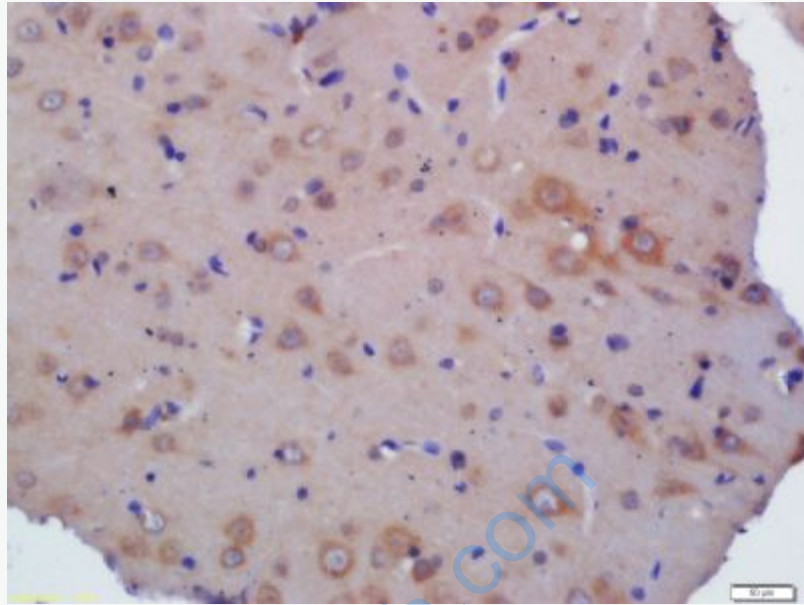
Secondary: IRDye800CW Goat Anti-Rabbit IgG at 1/20000 dilution

Predicted band size: 68 kD

Observed band size: 68 kD



Paraformaldehyde-fixed, paraffin embedded (Mouse brain); Antigen retrieval by boiling in sodium citrate buffer (pH6.0) for 15min; Block endogenous peroxidase by 3% hydrogen peroxide for 20 minutes; Blocking buffer (normal goat serum) at 37°C for 30min; Antibody incubation with (KLHL24) Polyclonal Antibody, Unconjugated (SL8050R) at 1:400 overnight at 4°C, followed by a conjugated secondary (sp-0023) for 20 minutes and DAB staining.



Tissue/cell: rat brain tissue; 4% Paraformaldehyde-fixed and paraffin-embedded;
Antigen retrieval: citrate buffer (0.01M, pH 6.0), Boiling bathing for 15min; Block endogenous peroxidase by 3% Hydrogen peroxide for 30min; Blocking buffer (normal goat serum,C-0005) at 37°C for 20 min;
Incubation: Anti-KLHL24 Polyclonal Antibody, Unconjugated(SL8050R) 1:200, overnight at 4°C, followed by conjugation to the secondary antibody(SP-0023) and DAB(C-0010) staining