



Rabbit Anti-CCDC30 antibody

SL8097R

Product Name:	CCDC30
Chinese Name:	卷曲螺旋结构域蛋白30抗体
Alias:	CCD30_HUMAN; CCDC30; Coiled-coil domain-containing protein 30; Prefoldin subunit 6-like protein.
Organism Species:	Rabbit
Clonality:	Polyclonal
React Species:	Human,
Applications:	WB=1:500-2000ELISA=1:500-1000IHC-P=1:400-800IHC-F=1:400-800IF=1:100-500 (Paraffin sections need antigen repair) not yet tested in other applications. optimal dilutions/concentrations should be determined by the end user.
Molecular weight:	91kDa
Cellular localization:	The nucleus
Form:	Lyophilized or Liquid
Concentration:	1mg/ml
immunogen:	KLH conjugated synthetic peptide derived from human CCDC30:601-700/783
Lsotype:	IgG
Purification:	affinity purified by Protein A
Storage Buffer:	0.01M TBS(pH7.4) with 1% BSA, 0.03% Proclin300 and 50% Glycerol.
Storage:	Store at -20 °C for one year. Avoid repeated freeze/thaw cycles. The lyophilized antibody is stable at room temperature for at least one month and for greater than a year when kept at -20°C. When reconstituted in sterile pH 7.4 0.01M PBS or diluent of antibody the antibody is stable for at least two weeks at 2-4 °C.
PubMed:	PubMed
Product Detail:	Expressed in brain, kidney, pancreas, placenta, liver, thymus and prostate. Tissue Specificity: Expressed in brain, kidney, pancreas, placenta, liver, thymus and prostate. Similarity:

Belongs to the prefoldin subunit beta family.

SWISS:
Q5VVM6

Gene ID:
728621

Database links:

[Entrez Gene: 728621](#)Human

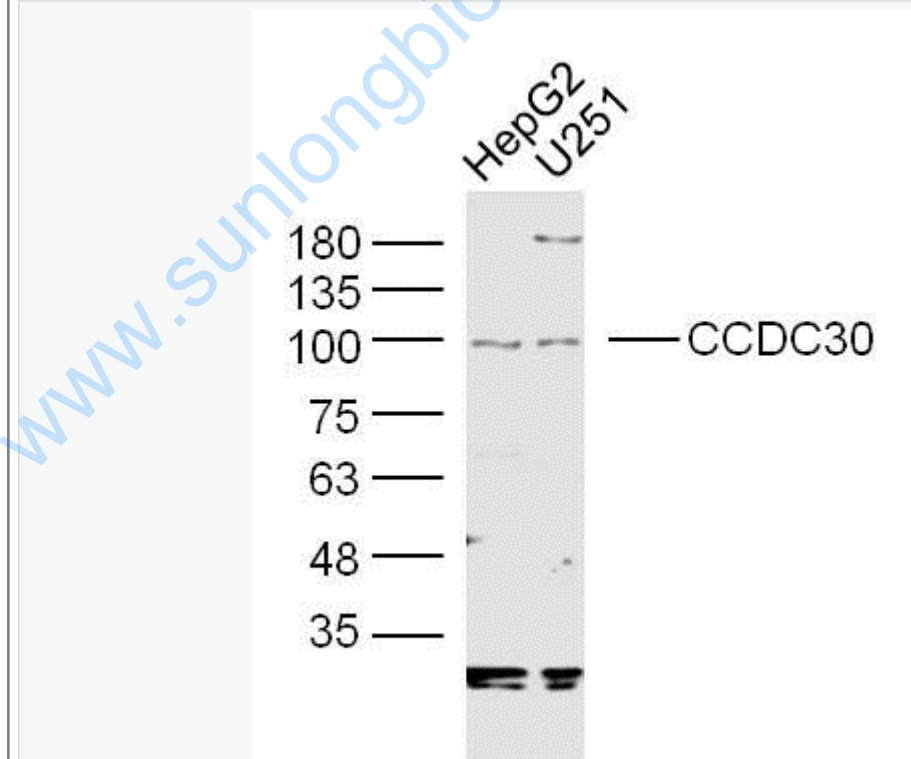
[SwissProt: Q5VVM6](#)Human

[Unigene: 729640](#)Human

Important Note:

This product as supplied is intended for research use only, not for use in human, therapeutic or diagnostic applications.

Picture:



Sample:

HepG2 Cell (Human) Lysate at 40 ug

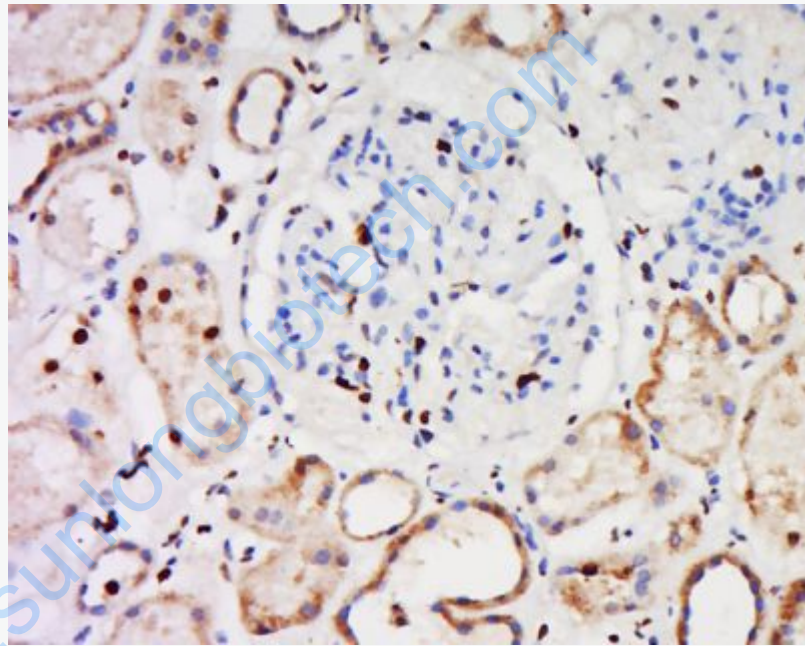
U251 Cell (Human) Lysate at 40 ug

Primary: Anti-CCDC30 (SL8097R) at 1/300 dilution

Secondary: IRDye800CW Goat Anti-Rabbit IgG at 1/20000 dilution

Predicted band size: 91 kD

Observed band size: 95 kD

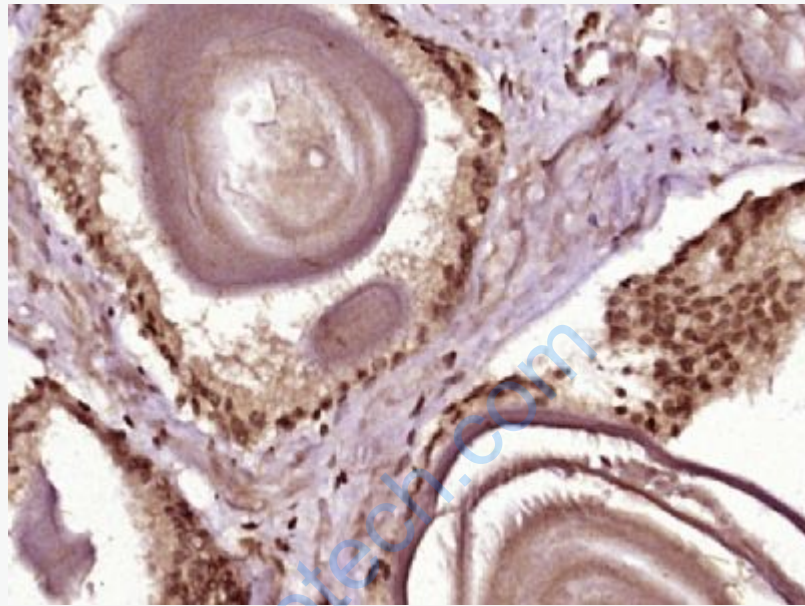


Tissue/cell: human kidney tissue; 4% Paraformaldehyde-fixed and paraffin-embedded;

Antigen retrieval: citrate buffer (0.01M, pH 6.0), Boiling bathing for 15min; Block endogenous peroxidase by 3% Hydrogen peroxide for 30min; Blocking buffer (normal goat serum,C-0005) at 37°C for 20 min;

Incubation: Anti-CCDC30 Polyclonal Antibody, Unconjugated(SL8097R) 1:500, overnight at 4°C, followed by conjugation to the secondary antibody(SP-0023) and

DAB(C-0010) staining



Paraformaldehyde-fixed, paraffin embedded (Human prostate); Antigen retrieval by boiling in sodium citrate buffer (pH6.0) for 15min; Block endogenous peroxidase by 3% hydrogen peroxide for 20 minutes; Blocking buffer (normal goat serum) at 37°C for 30min; Antibody incubation with (CCDC30) Polyclonal Antibody, Unconjugated (SL8097R) at 1:400 overnight at 4°C, followed by operating according to SP Kit(Rabbit) (sp-0023) instructions and DAB staining.