



Rabbit Anti-CCDC46 antibody

SL8133R

Product Name:	CCDC46
Chinese Name:	卷曲螺旋结构域蛋白46抗体
Alias:	CCDC 46; coiled coil domain containing 46; FLJ39610; MGC33887;
Organism Species:	Rabbit
Clonality:	Polyclonal
React Species:	Human,Mouse,Rat,Dog,Pig,Cow,Horse,Rabbit,Sheep,
Applications:	WB=1:500-2000ELISA=1:500-1000IHC-P=1:400-800IHC-F=1:400-800IF=1:100-500 (Paraffin sections need antigen repair) not yet tested in other applications. optimal dilutions/concentrations should be determined by the end user.
Molecular weight:	28kDa
Cellular localization:	cytoplasmic
Form:	Lyophilized or Liquid
Concentration:	1mg/ml
immunogen:	KLH conjugated synthetic peptide derived from human CCDC46:751-750/955
Lsotype:	IgG
Purification:	affinity purified by Protein A
Storage Buffer:	0.01M TBS(pH7.4) with 1% BSA, 0.03% Proclin300 and 50% Glycerol.
Storage:	Store at -20 °C for one year. Avoid repeated freeze/thaw cycles. The lyophilized antibody is stable at room temperature for at least one month and for greater than a year when kept at -20°C. When reconstituted in sterile pH 7.4 0.01M PBS or diluent of antibody the antibody is stable for at least two weeks at 2-4 °C.
PubMed:	PubMed
Product Detail:	This gene encodes a protein with filament, myosin tail and ATPase domains. Orthologs of this gene exist in mouse, rat and chimp. Alternate transcriptional splice variants, encoding different isoforms, have been characterized. [provided by RefSeq, Jul 2008]. Subcellular Location: Cytoplasm, cytoskeleton, centrosome (By similarity). Note=Localizes around spindle poles in some cells.

SWISS:
Q8N8E3

Gene ID:
201134

Database links:

[Entrez Gene: 201134](#)Human

[Entrez Gene: 76380](#)Mouse

[Entrez Gene: 287776](#)Rat

[SwissProt: Q8N8E3](#)Human

[SwissProt: Q5PR68](#)Mouse

[Unigene: 408676](#)Human

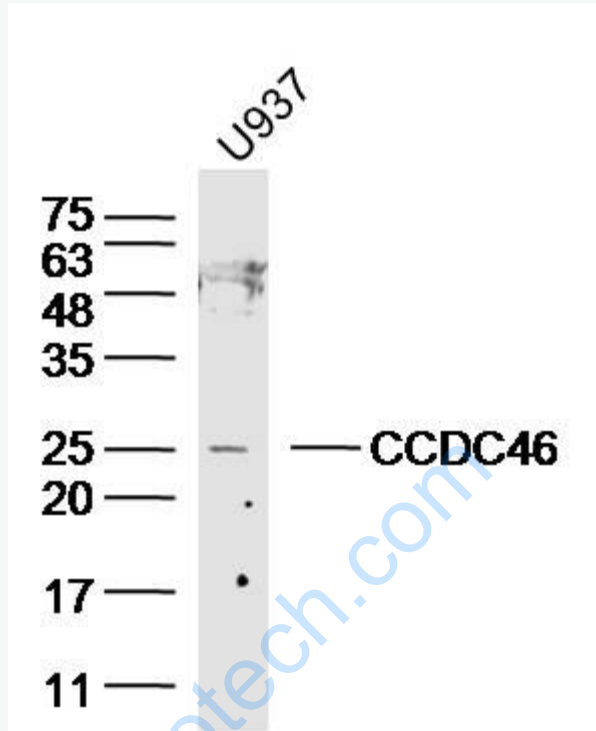
[Unigene: 344071](#)Mouse

[Unigene: 143963](#)Rat

Important Note:

This product as supplied is intended for research use only, not for use in human, therapeutic or diagnostic applications.

Picture:



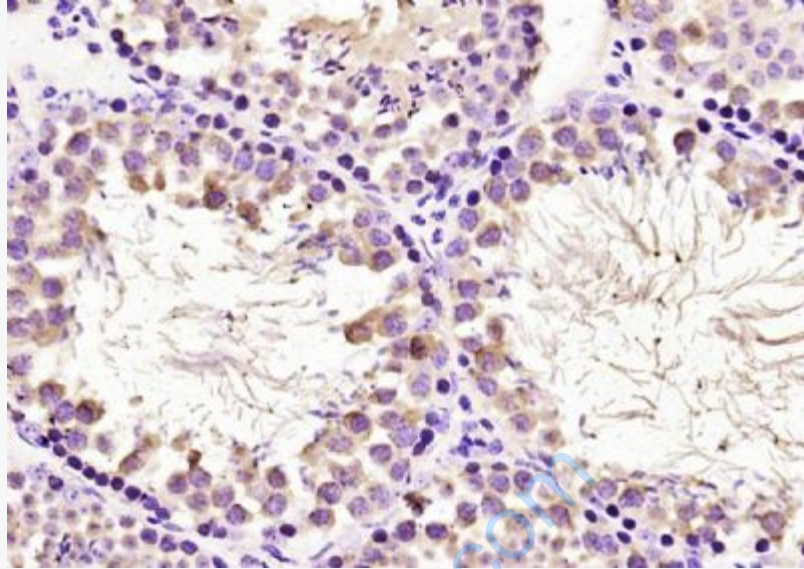
Sample: U937 Cell (Human) Lysate at 40 ug

Primary: Anti- CCDC46 (SL8133R) at 1/300 dilution

Secondary: IRDye800CW Goat Anti-Rabbit IgG at 1/20000 dilution

Predicted band size: 28 kD

Observed band size: 26 kD



Paraformaldehyde-fixed, paraffin embedded (mouse testis tissue); Antigen retrieval by boiling in sodium citrate buffer (pH6.0) for 15min; Block endogenous peroxidase by 3% hydrogen peroxide for 20 minutes; Blocking buffer (normal goat serum) at 37°C for 30min; Antibody incubation with (CCDC46) Polyclonal Antibody, Unconjugated (SL8133R) at 1:400 overnight at 4°C, followed by operating according to SP Kit(Rabbit) (sp-0023) instructions and DAB staining.