



Rabbit Anti-COMMD8 antibody

SL8182R

Product Name:	COMMD8
Chinese Name:	铜代谢结构域蛋白8抗体
Alias:	COMD8_HUMAN; COMM domain-containing protein 8; commd8; FLJ20502.
Organism Species:	Rabbit
Clonality:	Polyclonal
React Species:	Human,Mouse,Rat,Dog,Pig,Cow,Horse,Rabbit,Sheep,
Applications:	WB=1:500-2000ELISA=1:500-1000IHC-P=1:400-800IHC-F=1:400-800IF=1:100-500 (Paraffin sections need antigen repair) not yet tested in other applications. optimal dilutions/concentrations should be determined by the end user.
Molecular weight:	21kDa
Cellular localization:	The nucleocytoplasmic
Form:	Lyophilized or Liquid
Concentration:	1mg/ml
immunogen:	KLH conjugated synthetic peptide derived from human COMMD8:101-183/183
Lsotype:	IgG
Purification:	affinity purified by Protein A
Storage Buffer:	0.01M TBS(pH7.4) with 1% BSA, 0.03% Proclin300 and 50% Glycerol.
Storage:	Store at -20 °C for one year. Avoid repeated freeze/thaw cycles. The lyophilized antibody is stable at room temperature for at least one month and for greater than a year when kept at -20°C. When reconstituted in sterile pH 7.4 0.01M PBS or diluent of antibody the antibody is stable for at least two weeks at 2-4 °C.
PubMed:	PubMed
Product Detail:	Widely expressed with highest expression in thyroid. Subunit: Interacts (via COMM domain) with COMMD1 (via COMM domain). Tissue Specificity: Widely expressed with highest expression in thyroid.

Similarity:

Contains 1 COMM domain.

SWISS:

Q9NX08

Gene ID:

54951

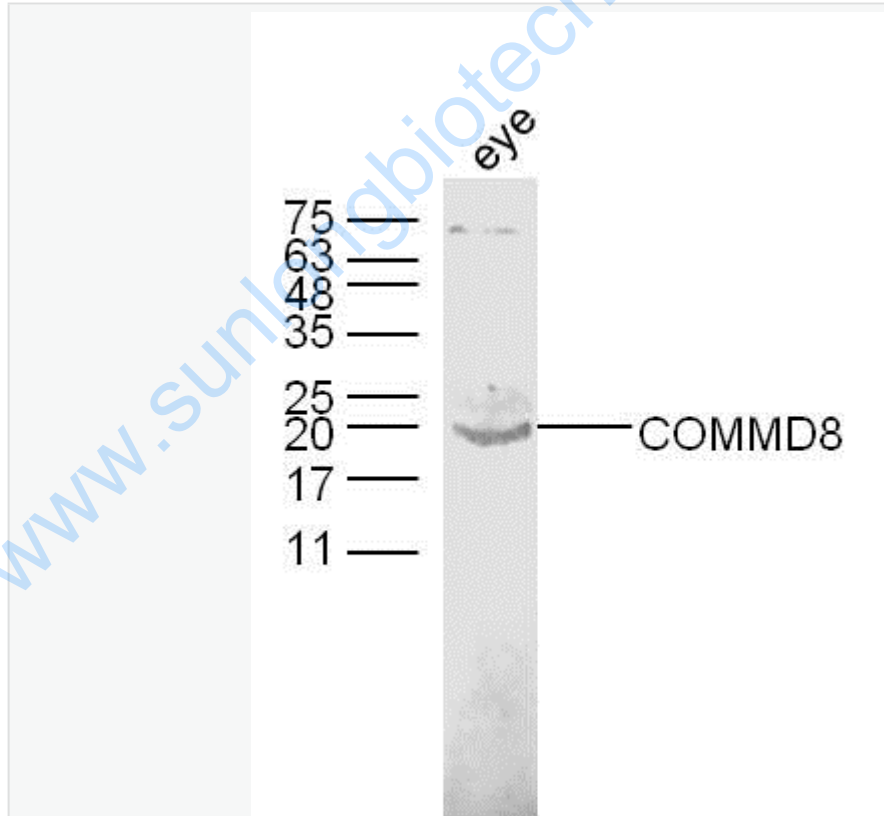
Database links:

UniProtKB/Swiss-Prot: Q9NX08.1

Important Note:

This product as supplied is intended for research use only, not for use in human, therapeutic or diagnostic applications.

Picture:



Sample: Eye (Mouse) Lysate at 40 ug

Primary: Anti-COMMD8 (SL8182R) at 1/300 dilution

Secondary: IRDye800CW Goat Anti-Rabbit IgG at 1/20000 dilution

	<p>Predicted band size: 21 kD</p>
--	-----------------------------------

	<p>Observed band size: 20 kD</p>
--	----------------------------------

www.sunlongbiotech.com