



Rabbit Anti-COMMD3 antibody

SL8183R

Product Name:	COMMD3
Chinese Name:	铜代谢结构域蛋白3抗体
Alias:	BUP; C10orf8 antibody COMM domain containing protein 3; DKFZp686K0399; FLJ45471; Protein PIL; COMD3_HUMAN.
Organism Species:	Rabbit
Clonality:	Polyclonal
React Species:	Human,Mouse,Rat,Dog,Cow,
Applications:	WB=1:500-2000ELISA=1:500-1000IHC-P=1:400-800IHC-F=1:400-800IF=1:100-500 (Paraffin sections need antigen repair) not yet tested in other applications. optimal dilutions/concentrations should be determined by the end user.
Molecular weight:	22kDa
Cellular localization:	The nucleocytoplasmic
Form:	Lyophilized or Liquid
Concentration:	1mg/ml
immunogen:	KLH conjugated synthetic peptide derived from human COMMD3:101-195/195
Lsotype:	IgG
Purification:	affinity purified by Protein A
Storage Buffer:	0.01M TBS(pH7.4) with 1% BSA, 0.03% Proclin300 and 50% Glycerol.
Storage:	Store at -20 °C for one year. Avoid repeated freeze/thaw cycles. The lyophilized antibody is stable at room temperature for at least one month and for greater than a year when kept at -20°C. When reconstituted in sterile pH 7.4 0.01M PBS or diluent of antibody the antibody is stable for at least two weeks at 2-4 °C.
PubMed:	PubMed
Product Detail:	COMMD3 is widely expressed, with highest expression in thymus. Function: May down-regulate activation of NF-kappa-B. Subunit:

Interacts (via COMM domain) with COMMD1 (via COMM domain).

Tissue Specificity:

Widely expressed with highest expression in thymus.

Similarity:

Contains 1 COMM domain.

SWISS:

Q9UBI1

Gene ID:

23412

Database links:

[Entrez Gene: 23412](#)Human

[Entrez Gene: 12238](#)Mouse

[Entrez Gene: 291339](#)Rat

[SwissProt: Q9UBI1](#)Human

[SwissProt: Q63829](#)Mouse

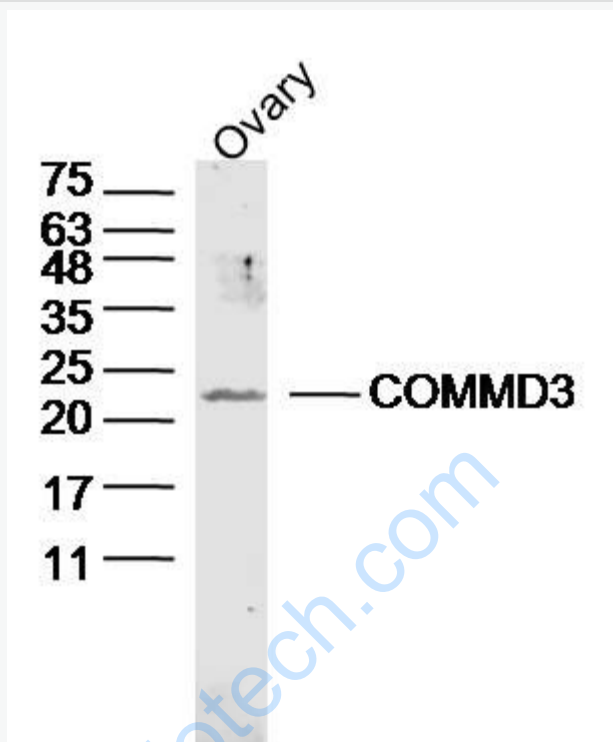
[SwissProt: Q6P9U3](#)Rat

[Unigene: 534398](#)Human

Important Note:

This product as supplied is intended for research use only, not for use in human, therapeutic or diagnostic applications.

Picture:



Sample: Ovary (Mouse) Lysate at 40 ug

Primary: Anti-COMMD3 (SL8183R) at 1/300 dilution

Secondary: IRDye800CW Goat Anti-Rabbit IgG at 1/20000 dilution

Predicted band size: 22 kD

Observed band size: 22 kD