



Rabbit Anti-AVSD2 antibody

SL8184R

Product Name:	AVSD2
Chinese Name:	富含半胱氨酸与表皮生长因子样蛋白2抗体
Alias:	Atrioventricular septal defect 2; AVSD2; CIRIN; Cysteine rich with EGF like domains 1; DKFZP566D213; CMTD1_HUMAN.
Organism Species:	Rabbit
Clonality:	Polyclonal
React Species:	Human,Mouse,Rat,Dog,Cow,Horse,Rabbit,
Applications:	WB=1:500-2000ELISA=1:500-1000IHC-P=1:400-800IHC-F=1:400-800IF=1:100-500 (Paraffin sections need antigen repair) not yet tested in other applications. optimal dilutions/concentrations should be determined by the end user.
Molecular weight:	45kDa
Cellular localization:	The cell membrane
Form:	Lyophilized or Liquid
Concentration:	1mg/ml
immunogen:	KLH conjugated synthetic peptide derived from human COMTD1:51-150/262
Lsotype:	IgG
Purification:	affinity purified by Protein A
Storage Buffer:	0.01M TBS(pH7.4) with 1% BSA, 0.03% Proclin300 and 50% Glycerol.
Storage:	Store at -20 °C for one year. Avoid repeated freeze/thaw cycles. The lyophilized antibody is stable at room temperature for at least one month and for greater than a year when kept at -20°C. When reconstituted in sterile pH 7.4 0.01M PBS or diluent of antibody the antibody is stable for at least two weeks at 2-4 °C.
PubMed:	PubMed
Product Detail:	CRELD1 is a protein composed of Epidermal growth factor-like repeats, which represent a group of cysteine-rich domains that mediate interactions between proteins of diverse function. Such domains are found in proteins that are either completely secreted or have transmembrane regions that link the protein to the cell surface. Function:

Putative O-methyltransferase (Potential).

Subunit:

Homodimer.

Subcellular Location:

Membrane; Single-pass type II membrane protein (Potential)

Similarity:

Belongs to the methyltransferase superfamily. Type 3 family.

SWISS:

Q86VU5

Gene ID:

118881

Database links:

[Entrez Gene: 118881](#)Human

[Entrez Gene: 69156](#)Mouse

[SwissProt: Q86VU5](#)Human

[SwissProt: Q8BIG7](#)Mouse

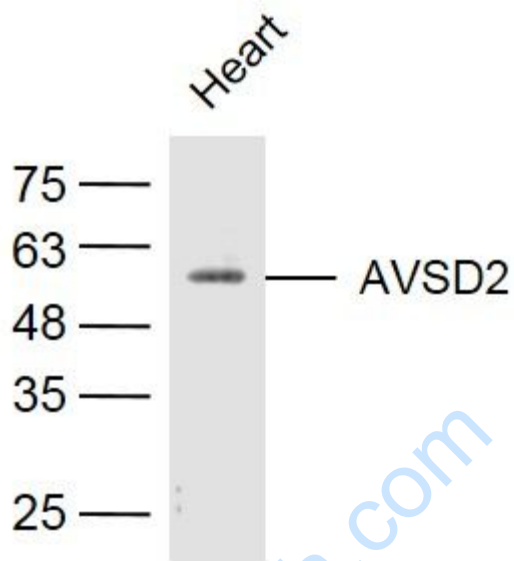
[Unigene: 355333](#)Human

[Unigene: 11827](#)Mouse

Important Note:

This product as supplied is intended for research use only, not for use in human, therapeutic or diagnostic applications.

Picture:



Sample:

Heart (Mouse) Lysate at 40 ug

Primary: Anti-AVSD2 (SL8184R) at 1/300 dilution

Secondary: IRDye800CW Goat Anti-Rabbit IgG at 1/20000 dilution

Predicted band size: 45 kD

Observed band size: 55 kD