



Rabbit Anti-CSMD2 antibody

SL8187R

| | |
|-------------------------------|--|
| Product Name: | CSMD2 |
| Chinese Name: | CSMD2蛋白抗体 |
| Alias: | CSMD2_HUMAN; CUB and Sushi (SCR repeat) domain; CUB and sushi domain-containing protein 2; CUB and sushi multiple domains protein 2; dJ1007G16.1; dJ1007G16.2; dJ947L8.1; KIAA1884. |
| Organism Species: | Rabbit |
| Clonality: | Polyclonal |
| React Species: | Human,Mouse,Rat,Chicken,Dog,Cow,Horse,Sheep, |
| Applications: | WB=1:500-2000ELISA=1:500-1000IHC-P=1:400-800IHC-F=1:400-800ICC=1:100-500IF=1:100-500 (Paraffin sections need antigen repair) not yet tested in other applications. optimal dilutions/concentrations should be determined by the end user. |
| Molecular weight: | 380kDa |
| Cellular localization: | The cell membrane |
| Form: | Lyophilized or Liquid |
| Concentration: | 1mg/ml |
| immunogen: | KLH conjugated synthetic peptide derived from human CSMD2:251-350/3487<Extracellular> |
| Lsotype: | IgG |
| Purification: | affinity purified by Protein A |
| Storage Buffer: | 0.01M TBS(pH7.4) with 1% BSA, 0.03% Proclin300 and 50% Glycerol. |
| Storage: | Store at -20 °C for one year. Avoid repeated freeze/thaw cycles. The lyophilized antibody is stable at room temperature for at least one month and for greater than a year when kept at -20°C. When reconstituted in sterile pH 7.4 0.01M PBS or diluent of antibody the antibody is stable for at least two weeks at 2-4 °C. |
| PubMed: | PubMed |
| Product Detail: | The CUB and sushi domain-containing proteins, CSMD1-3, are membrane proteins that are involved in cell-cell adhesion and are weakly expressed in most tissues, with higher levels of expression observed in the cerebellum and hippocampus. CSMD1 is part of the complement system that defends against pathogens through either the classical pathway |

or the alternative pathway. Located primarily in nerve growth cones, CSMD1 blocks the classical pathway of the immune system and is thought to be involved in tumor suppression, as defects in the gene encoding CSMD1 are associated with squamous cell carcinomas. CSMD2 and CSMD3 are located primarily in the brain and are implicated in some forms of head and neck cancer. Additionally, the CSMD3 gene is a candidate for induction of epileptic seizures.

Subcellular Location:

Cell membrane; Single-pass membrane protein (Potential).

Tissue Specificity:

Weakly expressed in most tissues, except in brain. Expressed at intermediate level in brain, including cerebellum, substantia nigra, hippocampus and fetal brain. Overexpressed in some head and neck cancer cell lines.

Similarity:

Belongs to the CSMD family.
Contains 14 CUB domains.
Contains 26 Sushi (CCP/SCR) domains.

SWISS:

Q7Z408

Gene ID:

114784

Database links:

[Entrez Gene: 114784](#)Human

[Omin: 608398](#)Human

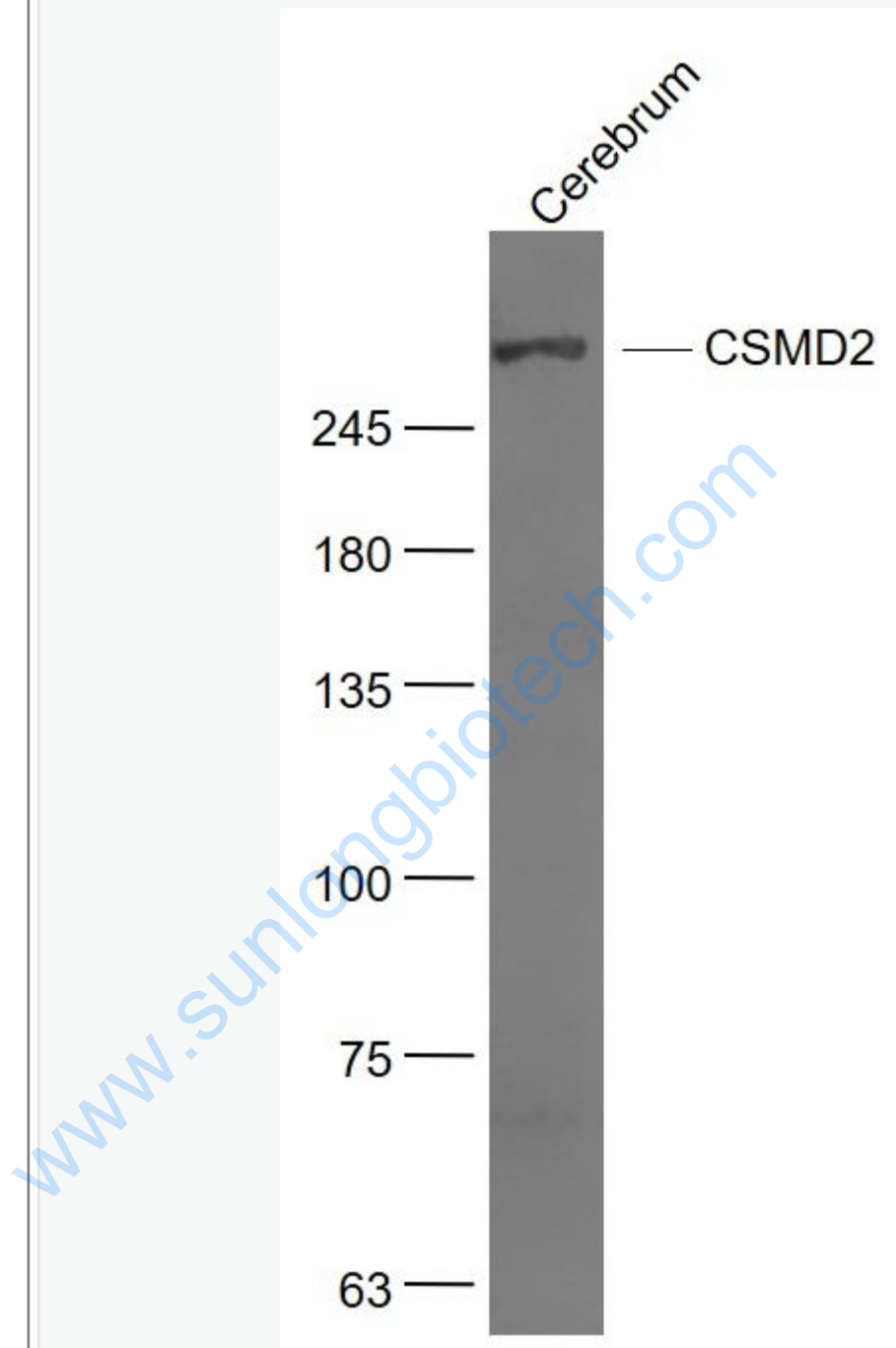
[SwissProt: Q7Z408](#)Human

[Unigene: 656915](#)Human

Important Note:

This product as supplied is intended for research use only, not for use in human, therapeutic or diagnostic applications.

Picture:



Sample:

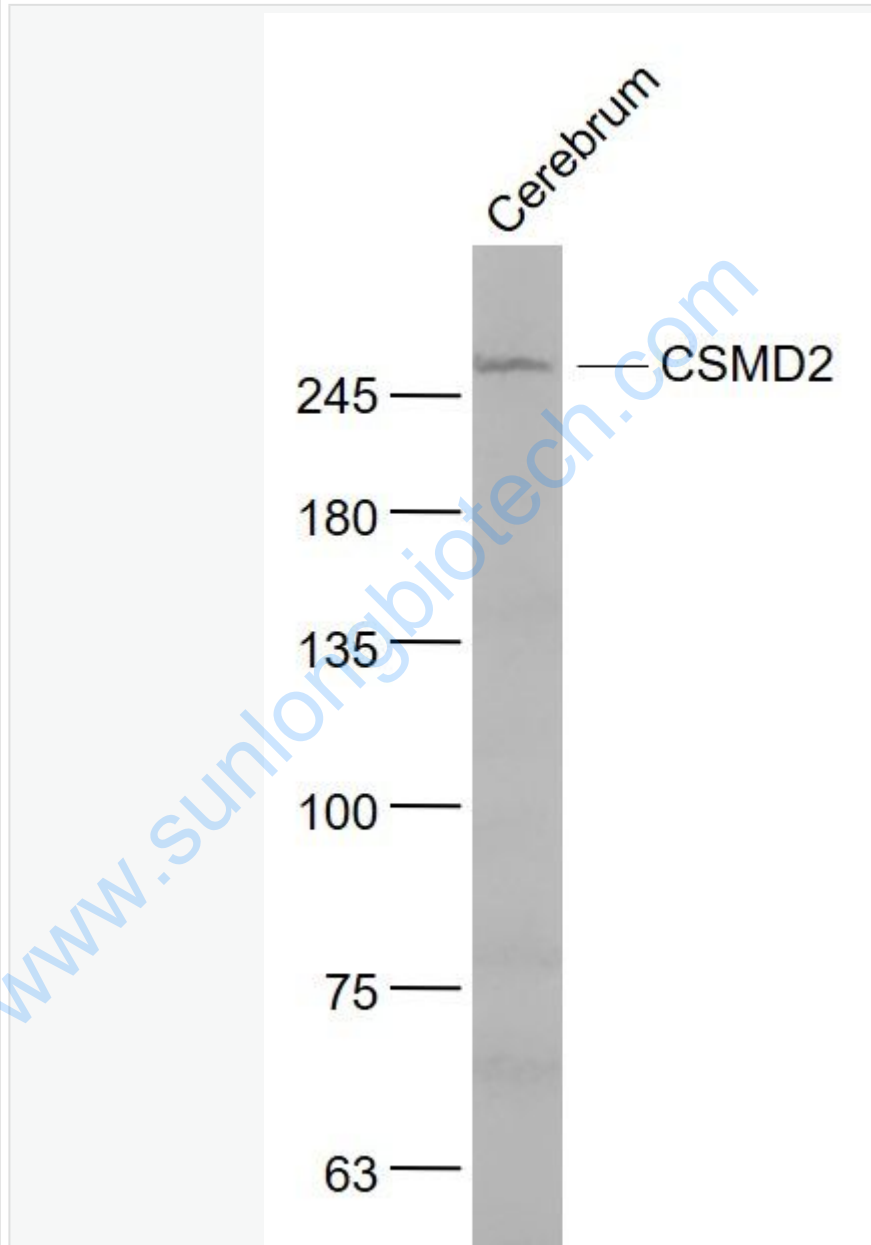
Cerebrum (Mouse) Lysate at 40 ug

Primary: Anti- CSMD2 (SL8187R) at 1/1000 dilution

Secondary: IRDye800CW Goat Anti-Rabbit IgG at 1/20000 dilution

Predicted band size: 380 kD

Observed band size: 380 kD



Sample:

Cerebrum (Mouse) Lysate at 40 ug

Primary: Anti- CSMD2 (SL8187R) at 1/1000 dilution

Secondary: IRDye800CW Goat Anti-Rabbit IgG at 1/20000 dilution

Predicted band size: 380 kD

Observed band size: 380 kD

www.sunlongbiotech.com