



## Rabbit Anti-TAAL6 antibody

SL8197R

<b>Product Name:</b>	TAAL6
<b>Chinese Name:</b>	Tumour相关蛋白抗原L6抗体
<b>Alias:</b>	M3S1; Membrane component chromosome 3 surface marker 1; T4S1_HUMAN; TAAL6; Tm4sf1; Transmembrane 4 L6 family member 1; Tumor-associated antigen L6.
<b>Organism Species:</b>	Rabbit
<b>Clonality:</b>	Polyclonal
<b>React Species:</b>	Human,Mouse,Rat,Pig,Cow,Horse,Rabbit,
<b>Applications:</b>	WB=1:500-2000ELISA=1:500-1000IHC-P=1:400-800IHC-F=1:400-800IF=1:100-500 (Paraffin sections need antigen repair) not yet tested in other applications. optimal dilutions/concentrations should be determined by the end user.
<b>Molecular weight:</b>	24kDa
<b>Cellular localization:</b>	The cell membrane
<b>Form:</b>	Lyophilized or Liquid
<b>Concentration:</b>	1mg/ml
<b>immunogen:</b>	KLH conjugated synthetic peptide derived from human Transmembrane 4 L6 family member 1:21-120/202<Extracellular>
<b>Lsotype:</b>	IgG
<b>Purification:</b>	affinity purified by Protein A
<b>Storage Buffer:</b>	0.01M TBS(pH7.4) with 1% BSA, 0.03% Proclin300 and 50% Glycerol.
<b>Storage:</b>	Store at -20 °C for one year. Avoid repeated freeze/thaw cycles. The lyophilized antibody is stable at room temperature for at least one month and for greater than a year when kept at -20°C. When reconstituted in sterile pH 7.4 0.01M PBS or diluent of antibody the antibody is stable for at least two weeks at 2-4 °C.
<b>PubMed:</b>	<a href="#">PubMed</a>
<b>Product Detail:</b>	The protein encoded by this gene is a member of the transmembrane 4 superfamily, also known as the tetraspanin family. Most of these members are cell-surface proteins that are characterized by the presence of four hydrophobic domains. The proteins mediate signal transduction events that play a role in the regulation of cell development,

activation, growth and motility. This encoded protein is a cell surface antigen and is highly expressed in different carcinomas. [provided by RefSeq, Jul 2008]

**Subcellular Location:**

Membrane; Multi-pass membrane protein.

**Tissue Specificity:**

Highly expressed in lung, breast, colon and ovarian carcinomas. It is also present on some normal cells, endothelial cells in particular.

**Similarity:**

Belongs to the L6 tetraspanin family.

**SWISS:**

P30408

**Gene ID:**

4071

**Database links:**

[Entrez Gene: 4071](#) Human

[Entrez Gene: 17112](#) Mouse

[Entrez Gene: 295061](#) Rat

[Omim: 191155](#) Human

[SwissProt: P30408](#) Human

[SwissProt: Q64302](#) Mouse

[Unigene: 351316](#) Human

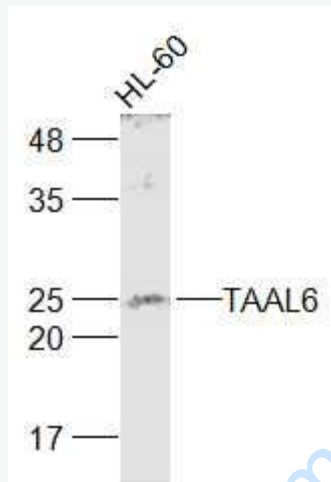
[Unigene: 856](#) Mouse

[Unigene: 24712](#) Rat

**Important Note:**

This product as supplied is intended for research use only, not for use in human, therapeutic or diagnostic applications.

Picture:



Sample:

HL-60(Human) Cell Lysate at 30 ug

Primary: Anti-TAAL6 (SL8197R) at 1/1000 dilution

Secondary: IRDye800CW Goat Anti-Rabbit IgG at 1/20000 dilution

Predicted band size: 24 kD

Observed band size: 24 kD