



Rabbit Anti-FAM161B antibody

SL8226R

Product Name:	FAM161B
Chinese Name:	FAM161B蛋白抗体
Alias:	C14orf44; Chromosome 14 open reading frame 44; Family with sequence similarity 161, member B; FLJ31697; Hypothetical protein LOC145483; Protein FAM161B; F161B_HUMAN.
Organism Species:	Rabbit
Clonality:	Polyclonal
React Species:	Human,Mouse,Rat,Dog,Pig,Cow,Horse,
Applications:	ELISA=1:500-1000IHC-P=1:400-800IHC-F=1:400-800IF=1:100-500 (Paraffin sections need antigen repair) not yet tested in other applications. optimal dilutions/concentrations should be determined by the end user.
Molecular weight:	74kDa
Cellular localization:	cytoplasmic
Form:	Lyophilized or Liquid
Concentration:	1mg/ml
immunogen:	KLH conjugated synthetic peptide derived from human FAM161B:451-560/647
Lsotype:	IgG
Purification:	affinity purified by Protein A
Storage Buffer:	0.01M TBS(pH7.4) with 1% BSA, 0.03% Proclin300 and 50% Glycerol.
Storage:	Store at -20 °C for one year. Avoid repeated freeze/thaw cycles. The lyophilized antibody is stable at room temperature for at least one month and for greater than a year when kept at -20°C. When reconstituted in sterile pH 7.4 0.01M PBS or diluent of antibody the antibody is stable for at least two weeks at 2-4 °C.
PubMed:	PubMed
Product Detail:	FAM161B is a 647 amino acid protein that belongs to the FAM161 family. The gene that encodes FAM161B consists of approximately 16,413 bases and maps to human chromosome 14q24.3. Housing over 700 genes, chromosome 14 comprises nearly 3.5% of the human genome. Chromosome 14 encodes the Presenilin 1 (PSEN1) gene, which is one of the three key genes associated with the development of Alzheimer's disease. The

SERPINA1 gene is also located on chromosome 14 and, when defective, leads to the genetic disorder α 1-antitrypsin deficiency, which is characterized by severe lung complications and liver dysfunction. An inversion of the long arm of chromosome 14 is thought to be involved in T-cell chronic lymphocytic leukemia (CLL), a cancer that affects T lymphocytes.

Subunit:

Interacts with FAM161A.

Tissue Specificity:

Ubiquitously expressed.

Similarity:

Belongs to the FAM161 family.

SWISS:

Q96MY7

Gene ID:

145483

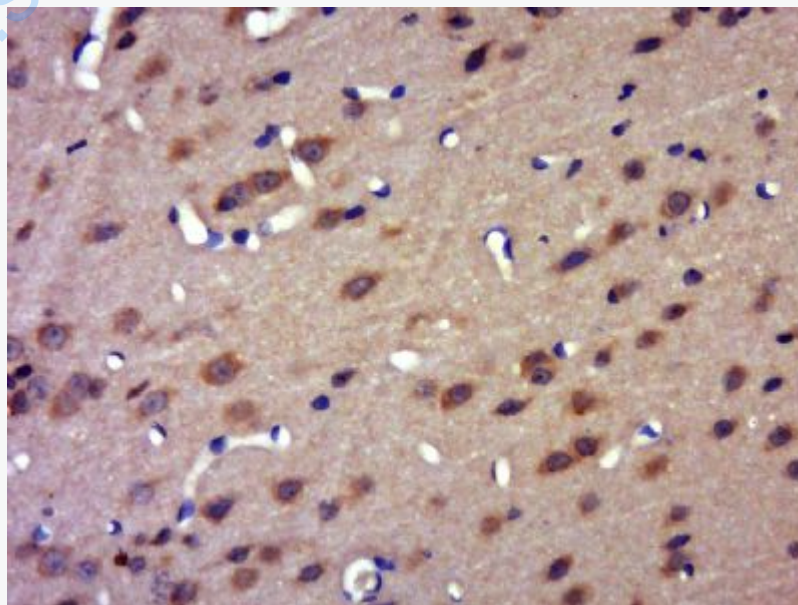
Database links:

UniProtKB/Swiss-Prot: Q96MY7.2

Important Note:

This product as supplied is intended for research use only, not for use in human, therapeutic or diagnostic applications.

Picture:



Paraformaldehyde-fixed, paraffin embedded (rat brain); Antigen retrieval by boiling in sodium citrate buffer (pH6.0) for 15min; Block endogenous peroxidase by 3% hydrogen peroxide for 20 minutes; Blocking buffer (normal goat serum) at 37°C for 30min; Antibody incubation with (FAM161B) Polyclonal Antibody, Unconjugated (SL8226R) at 1:500 overnight at 4°C, followed by a conjugated secondary (sp-0023) for 20 minutes and DAB staining.

www.sunlongbiotech.com