



## Rabbit Anti-FRMD5 antibody

SL8237R

<b>Product Name:</b>	FRMD5
<b>Chinese Name:</b>	FRMD5蛋白抗体
<b>Alias:</b>	FERM domain containing 5; FERM domain-containing protein 5; FLJ41022; FRMD5; FRMD5 HUMAN; MGC14161.
<b>Organism Species:</b>	Rabbit
<b>Clonality:</b>	Polyclonal
<b>React Species:</b>	Human,Mouse,Rat,Dog,Pig,Cow,Horse,Rabbit,Sheep,
<b>Applications:</b>	WB=1:500-2000ELISA=1:500-1000IHC-P=1:400-800IHC-F=1:400-800IF=1:100-500 (Paraffin sections need antigen repair) not yet tested in other applications. optimal dilutions/concentrations should be determined by the end user.
<b>Molecular weight:</b>	65kDa
<b>Cellular localization:</b>	The cell membrane
<b>Form:</b>	Lyophilized or Liquid
<b>Concentration:</b>	1mg/ml
<b>immunogen:</b>	KLH conjugated synthetic peptide derived from human FRMD5:211-312/570
<b>Lsotype:</b>	IgG
<b>Purification:</b>	affinity purified by Protein A
<b>Storage Buffer:</b>	0.01M TBS(pH7.4) with 1% BSA, 0.03% Proclin300 and 50% Glycerol.
<b>Storage:</b>	Store at -20 °C for one year. Avoid repeated freeze/thaw cycles. The lyophilized antibody is stable at room temperature for at least one month and for greater than a year when kept at -20°C. When reconstituted in sterile pH 7.4 0.01M PBS or diluent of antibody the antibody is stable for at least two weeks at 2-4 °C.
<b>PubMed:</b>	<a href="#">PubMed</a>
<b>Product Detail:</b>	FERM domains are roughly 150 amino acids in length and are found in a number of cytoskeletal-associated proteins such as Ezrin, Radixin, Moesin and 4.1 (erythrocyte membrane protein band 4.1), where they provide a link between cytoskeletal signals and membrane dynamics. FRMD5 (FERM domain-containing protein 5) is a 570 amino acid single-pass membrane protein that contains one FERM domain and exists as two alternatively spliced isoforms. The gene encoding FRMD5 maps to human chromosome

15, which houses over 700 genes and comprises nearly 3% of the human genome. Angelman syndrome, Prader-Willi syndrome, Tay-Sachs disease and Marfan syndrome are all associated with defects in chromosome 15-localized genes.

**Subcellular Location:**

Membrane; Single-pass membrane protein (Potential).

**Similarity:**

Contains 1 FERM domain.

**SWISS:**

Q7Z6J6

**Gene ID:**

84978

**Database links:**

[Entrez Gene: 84978](#)Human

[Entrez Gene: 228564](#)Mouse

[Entrez Gene: 311362](#)Rat

[SwissProt: Q7Z6J6](#)Human

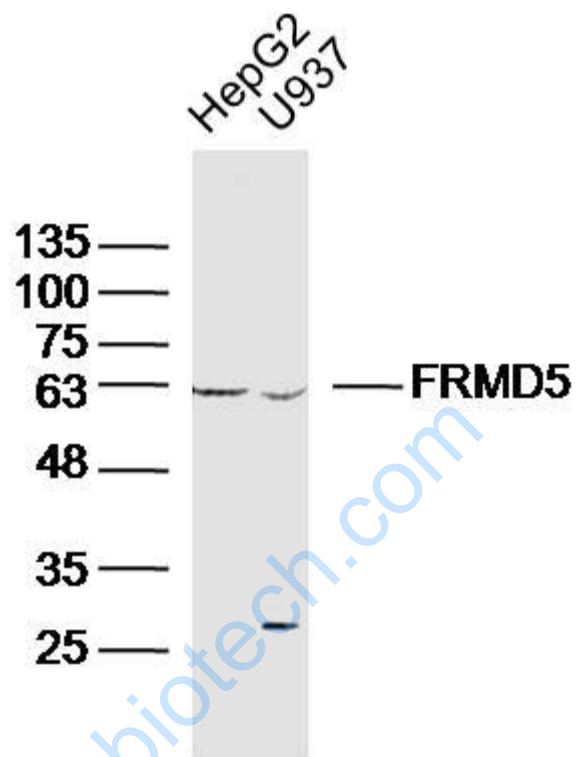
[SwissProt: Q6P5H6](#)Mouse

[Unigene: 578544](#)Human

**Important Note:**

This product as supplied is intended for research use only, not for use in human, therapeutic or diagnostic applications.

Picture:



Sample:

HepG2 (human)cell Lysate at 40 ug

U937 (human)cell Lysate at 40 ug

Primary: Anti-FRMD5 (SL8237R)at 1/300 dilution

Secondary: IRDye800CW Goat Anti-RabbitIgG at 1/20000 dilution

Predicted band size: 65 kD

Observed band size: 63 kD