



## Rabbit Anti-CTDSPL antibody

SL8241R

<b>Product Name:</b>	CTDSPL
<b>Chinese Name:</b>	CTDSPL蛋白抗体
<b>Alias:</b>	Carboxy-terminal domain RNA polymerase II polypeptide A small phosphatase 3; CTD small phosphatase-like protein; CTDSL_HUMAN; CTDSP-like; Ctdspl; hYA22; NIF-like protein; NLI-interacting factor 1; Nuclear LIM interactor-interacting factor 1; Protein YA22; RBSP3; SCP3; Small C-terminal domain phosphatase 3; Small CTD phosphatase 3.
<b>Organism Species:</b>	Rabbit
<b>Clonality:</b>	Polyclonal
<b>React Species:</b>	Human,Mouse,Rat,Chicken,Pig,Cow,Horse,Sheep,
<b>Applications:</b>	WB=1:500-2000ELISA=1:500-1000IHC-P=1:400-800IHC-F=1:400-800Flow-Cyt=1ug/testIF=1:100-500 (Paraffin sections need antigen repair) not yet tested in other applications. optimal dilutions/concentrations should be determined by the end user.
<b>Molecular weight:</b>	31kDa
<b>Cellular localization:</b>	The nucleus
<b>Form:</b>	Lyophilized or Liquid
<b>Concentration:</b>	1mg/ml
<b>immunogen:</b>	KLH conjugated synthetic peptide derived from human CTDSPL:175-276/276
<b>Lsotype:</b>	IgG
<b>Purification:</b>	affinity purified by Protein A
<b>Storage Buffer:</b>	0.01M TBS(pH7.4) with 1% BSA, 0.03% Proclin300 and 50% Glycerol.
<b>Storage:</b>	Store at -20 °C for one year. Avoid repeated freeze/thaw cycles. The lyophilized antibody is stable at room temperature for at least one month and for greater than a year when kept at -20°C. When reconstituted in sterile pH 7.4 0.01M PBS or diluent of antibody the antibody is stable for at least two weeks at 2-4 °C.
<b>PubMed:</b>	<a href="#">PubMed</a>
<b>Product Detail:</b>	Preferentially catalyzes the dephosphorylation of 'Ser-5' within the tandem 7 residues repeats in the C-terminal domain (CTD) of the largest RNA polymerase II subunit POLR2A. Negatively regulates RNA polymerase II transcription, possibly by

controlling the transition from initiation/capping to processive transcript elongation (By similarity). Recruited by REST to neuronal genes that contain RE-1 elements, leading to neuronal gene silencing in non-neuronal cells.

**Function:**

Preferentially catalyzes the dephosphorylation of 'Ser-5' within the tandem 7 residues repeats in the C-terminal domain (CTD) of the largest RNA polymerase II subunit POLR2A. Negatively regulates RNA polymerase II transcription, possibly by controlling the transition from initiation/capping to processive transcript elongation (By similarity). Recruited by REST to neuronal genes that contain RE-1 elements, leading to neuronal gene silencing in non-neuronal cells.

**Subunit:**

Monomer. Interacts with REST.

**Subcellular Location:**

Nucleus (By similarity).

**Tissue Specificity:**

Expression is restricted to non-neuronal tissues.

**Similarity:**

Contains 1 FCP1 homology domain.

**SWISS:**

O15194

**Gene ID:**

10217

**Database links:**

[Entrez Gene: 10217](#)Human

[Entrez Gene: 69274](#)Mouse

[Entrez Gene: 301056](#)Rat

[Omim: 608592](#)Human

[SwissProt: O15194](#)Human

[SwissProt: P58465](#)Mouse

[SwissProt: Q5XIK8](#)Rat

[Unigene: 475963](#)Human

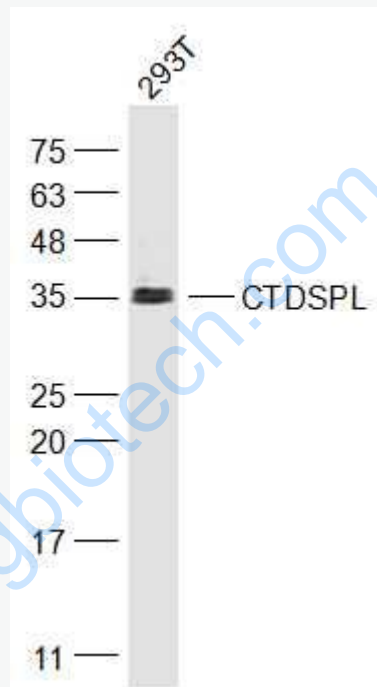
[Unigene: 439928](#)Mouse

[Unigene: 37030Rat](#)

**Important Note:**

This product as supplied is intended for research use only, not for use in human, therapeutic or diagnostic applications.

**Picture:**



Sample:

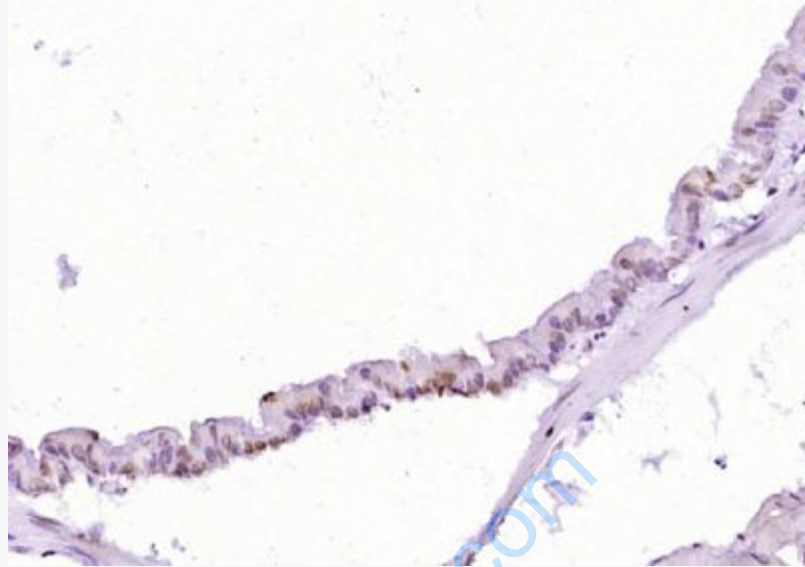
293T(Human) Cell Lysate at 30 ug

Primary: Anti-CTDSPL (SL8241R) at 1/1000 dilution

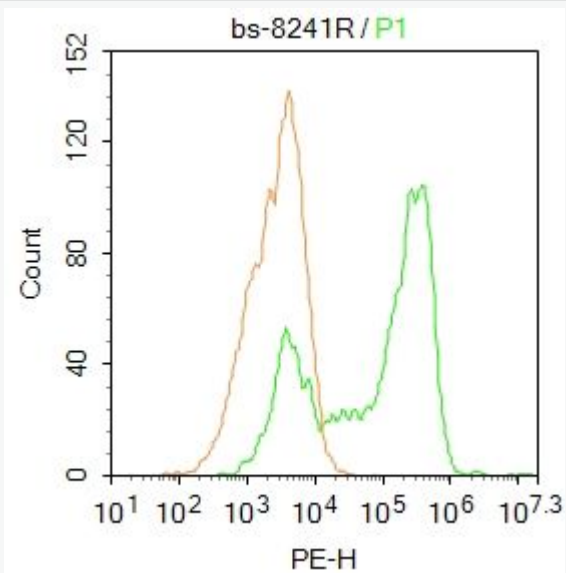
Secondary: IRDye800CW Goat Anti-Rabbit IgG at 1/20000 dilution

Predicted band size: 31 kD

Observed band size: 31 kD



Paraformaldehyde-fixed, paraffin embedded (mouse lung tissue); Antigen retrieval by boiling in sodium citrate buffer (pH6.0) for 15min; Block endogenous peroxidase by 3% hydrogen peroxide for 20 minutes; Blocking buffer (normal goat serum) at 37°C for 30min; Antibody incubation with (CTDSPL) Polyclonal Antibody, Unconjugated (SL8241R) at 1:400 overnight at 4°C, followed by operating according to SP Kit(Rabbit) (sp-0023) instructions and DAB staining.



Blank control: HepG2.

Primary Antibody (green line): Rabbit Anti-CTDSPL antibody (SL8241R)

Dilution:  $1\mu\text{g} / 10^6$  cells;

Isotype Control Antibody (orange line): Rabbit IgG .

Secondary Antibody : Goat anti-rabbit IgG-PE

Dilution:  $1\mu\text{g} / \text{test}$ .

#### Protocol

The cells were fixed with 4% PFA (10min at room temperature) and then permeabilized with 90% ice-cold methanol for 20 min at  $-20^\circ\text{C}$ . The cells were then incubated in 5% BSA to block non-specific protein-protein interactions for 30 min at room temperature. Cells stained with Primary Antibody for 30 min at room temperature. The secondary antibody used for 40 min at room temperature.

Acquisition of 20,000 events was performed.