



Rabbit Anti-CTDSPL2 antibody

SL8242R

Product Name:	CTDSPL2
Chinese Name:	CTDSPL2蛋白抗体
Alias:	CTD small phosphatase like protein 2; CTD small phosphatase-like protein 2; CTDSP like 2; CTDSP-like 2; ctdspl2; CTSL2 HUMAN; HSPC058; HSPC129.
Organism Species:	Rabbit
Clonality:	Polyclonal
React Species:	Human,Mouse,Rat,Dog,Horse,Sheep,
Applications:	WB=1:500-2000ELISA=1:500-1000IHC-P=1:400-800IHC-F=1:400-800IF=1:100-500 (Paraffin sections need antigen repair) not yet tested in other applications. optimal dilutions/concentrations should be determined by the end user.
Molecular weight:	53kDa
Cellular localization:	The nucleus
Form:	Lyophilized or Liquid
Concentration:	1mg/ml
immunogen:	KLH conjugated synthetic peptide derived from human CTDSPL2:11-110/466
Lsotype:	IgG
Purification:	affinity purified by Protein A
Storage Buffer:	0.01M TBS(pH7.4) with 1% BSA, 0.03% Proclin300 and 50% Glycerol.
Storage:	Store at -20 °C for one year. Avoid repeated freeze/thaw cycles. The lyophilized antibody is stable at room temperature for at least one month and for greater than a year when kept at -20°C. When reconstituted in sterile pH 7.4 0.01M PBS or diluent of antibody the antibody is stable for at least two weeks at 2-4 °C.
PubMed:	PubMed
Product Detail:	CTDSPL2 (CTD (carboxy-terminal domain, RNA polymerase II, polypeptide A) small phosphatase like 2), also known as HSPC058 or HSPC129, is a 466 amino acid protein that contains one FCP1 homology domain and belongs to the CTDSPL2 family. Existing as two alternatively spliced isoforms, CTDSPL2 is thought to function as a phosphatase and is encoded by a gene that maps to human chromosome 15q15.3. Encoding more than 700 genes, chromosome 15 is made up of approximately 106

million base pairs and comprises about 3% of the human genome. Angelman syndrome, Prader-Willi syndrome, Tay-Sachs disease and Marfan syndrome are all associated with defects in chromosome 15-localized genes.

Function:

Probable phosphatase (By similarity).

Similarity:

Belongs to the CTDSPL2 family.

Contains 1 FCP1 homology domain.

SWISS:

Q05D32

Gene ID:

51496

Database links:

[Entrez Gene: 51496](#)Human

[Entrez Gene: 329506](#)Mouse

[SwissProt: Q05D32](#)Human

[SwissProt: Q8BG15](#)Mouse

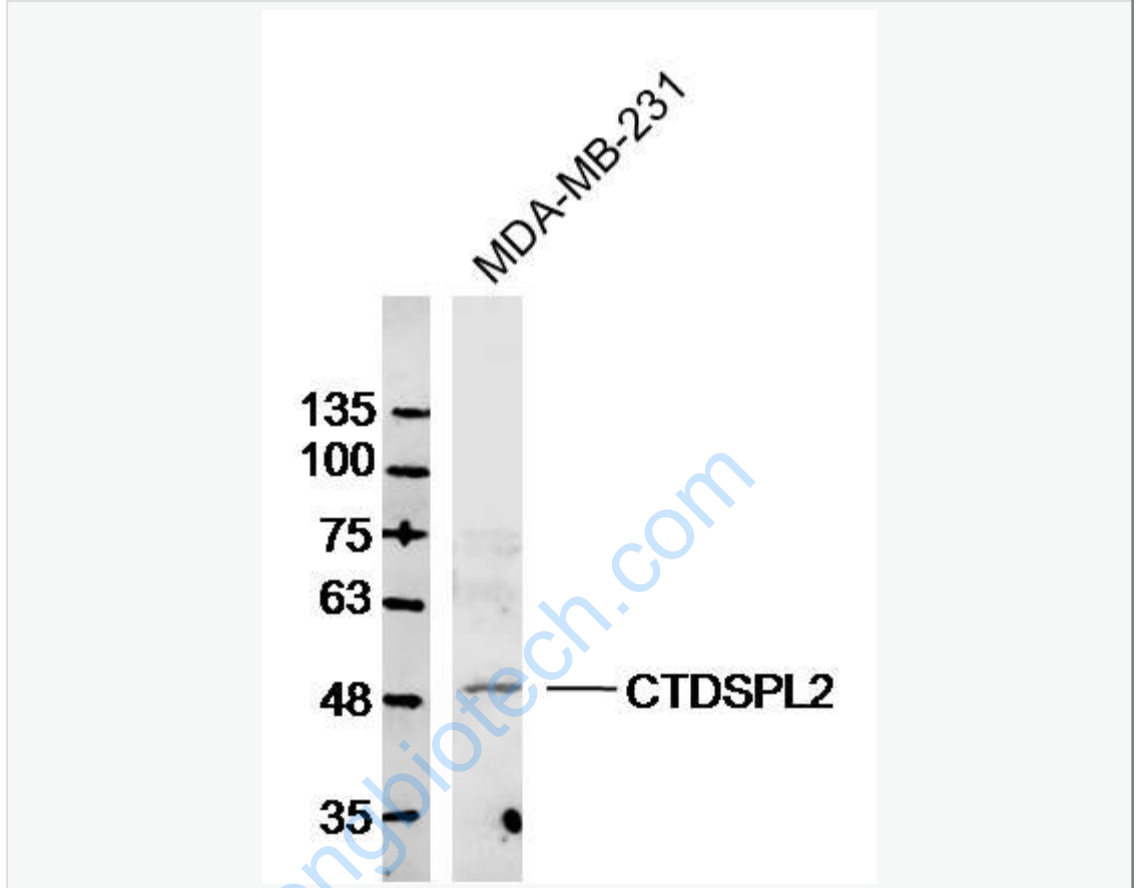
[Unigene: 497967](#)Human

[Unigene: 249405](#)Mouse

Important Note:

This product as supplied is intended for research use only, not for use in human, therapeutic or diagnostic applications.

Picture:



Sample: MDA-MB-231 Cell (Human) Lysate at 30 ug

Primary: Anti-CTDSPL2 (SL8242R) at 1/300 dilution

Secondary: IRDye800CW Goat Anti-Rabbit IgG at 1/20000 dilution

Predicted band size: 53kD

Observed band size: 53kD