



Rabbit Anti-Alpha casein antibody

SL8245R

Product Name:	Alpha casein
Chinese Name:	α 酪蛋白抗体
Alias:	Alpha-S1-casein; CASA; CASA1_HUMAN; Casein alpha s1; Casoxin-D; CSN1; CSN1S1.
Organism Species:	Rabbit
Clonality:	Polyclonal
React Species:	Human,
Applications:	WB=1:500-2000ELISA=1:500-1000IHC-F=1:400-800IF=1:100-500 (Paraffin sections need antigen repair) not yet tested in other applications. optimal dilutions/concentrations should be determined by the end user.
Molecular weight:	28kDa
Cellular localization:	Secretory protein
Form:	Lyophilized or Liquid
Concentration:	1mg/ml
immunogen:	KLH conjugated synthetic peptide derived from human Alpha casein:31-130/185
Lsotype:	IgG
Purification:	affinity purified by Protein A
Storage Buffer:	0.01M TBS(pH7.4) with 1% BSA, 0.03% Proclin300 and 50% Glycerol.
Storage:	Store at -20 °C for one year. Avoid repeated freeze/thaw cycles. The lyophilized antibody is stable at room temperature for at least one month and for greater than a year when kept at -20°C. When reconstituted in sterile pH 7.4 0.01M PBS or diluent of antibody the antibody is stable for at least two weeks at 2-4 °C.
PubMed:	PubMed
Product Detail:	Important role in the capacity of milk to transport calcium phosphate. Casoxin D acts as opioid antagonist and has vasorelaxing activity mediated by bradykinin B1. Subunit: Heteromultimers of alpha-s1 casein and kappa-casein; disulfide-linked.

Subcellular Location:

Secreted.

Tissue Specificity:

Mammary gland specific. Secreted in milk.

Similarity:

Belongs to the alpha-casein family.

SWISS:

P47710

Gene ID:

1446

Database links:

[Entrez Gene: 1446](#)Human

[Oimim: 115450](#)Human

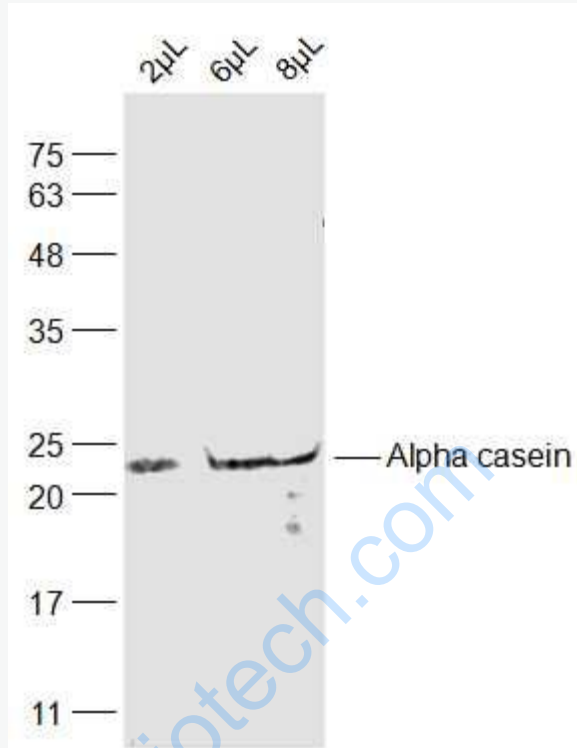
[SwissProt: P47710](#)Human

[Unigene: 3155](#)Human

Important Note:

This product as supplied is intended for research use only, not for use in human, therapeutic or diagnostic applications.

Picture:



Sample:

Human breast milk Lysate at 2 uL

Human breast milk Lysate at 6 uL

Human breast milk Lysate at 8 uL

Primary: Anti-Alpha casein (SL8245R) at 1/2000 dilution

Secondary: IRDye800CW Goat Anti-Rabbit IgG at 1/20000 dilution

Predicted band size: 28 kD

Observed band size: 21 kD