

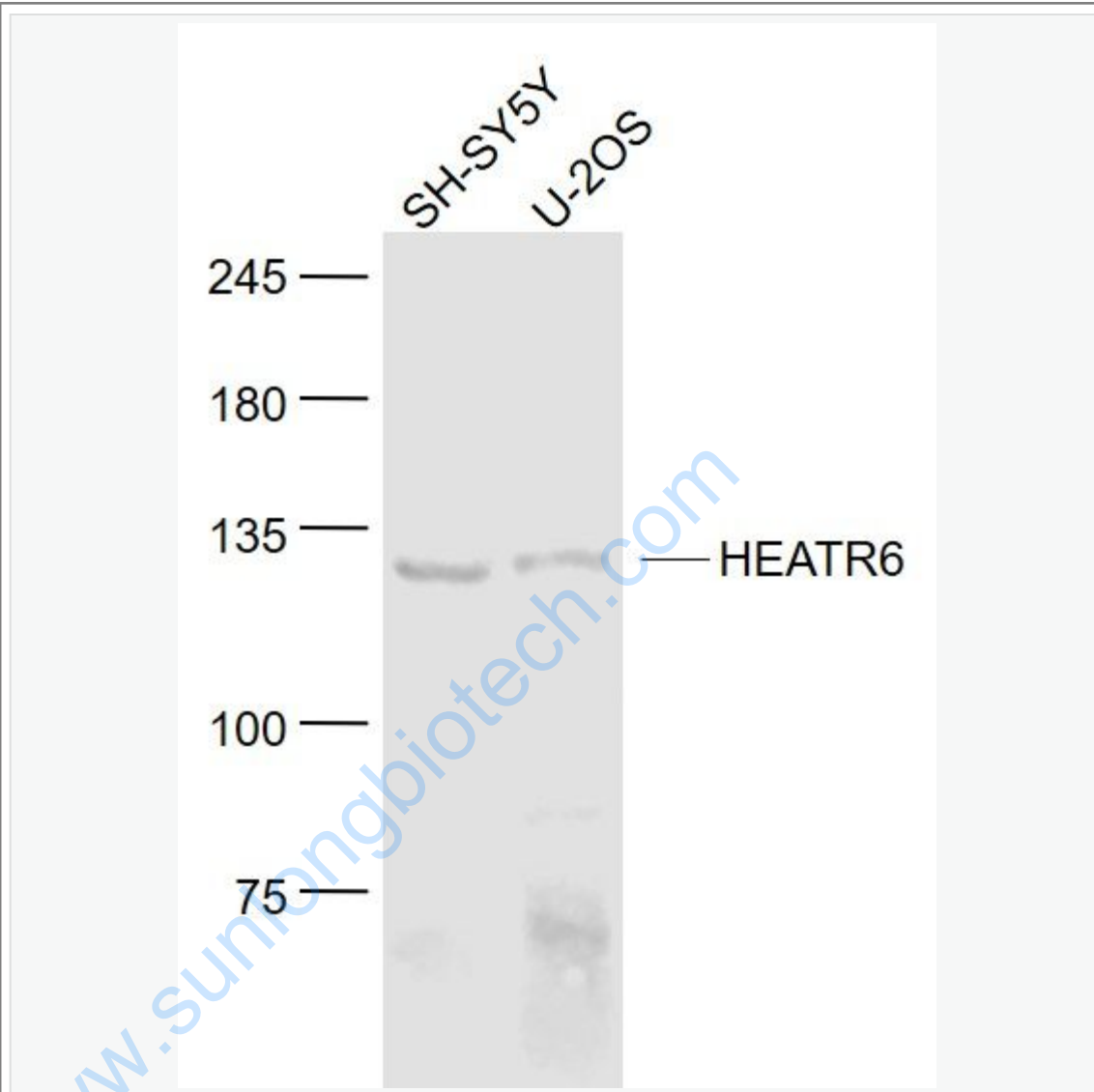


## Rabbit Anti-HEATR6 antibody

SL8321R

<b>Product Name:</b>	HEATR6
<b>Chinese Name:</b>	乳腺癌增强蛋白抗体
<b>Alias:</b>	Amplified in breast cancer protein 1; HEAT repeat-containing protein 6; HEAT6_HUMAN; HEATR6.
<b>Organism Species:</b>	Rabbit
<b>Clonality:</b>	Polyclonal
<b>React Species:</b>	Human,Mouse,Rat,Dog,Cow,Horse,Rabbit,Sheep,
<b>Applications:</b>	WB=1:500-2000ELISA=1:500-1000IHC-P=1:400-800IHC-F=1:400-800IF=1:100-500 (Paraffin sections need antigen repair) not yet tested in other applications. optimal dilutions/concentrations should be determined by the end user.
<b>Molecular weight:</b>	129kDa
<b>Cellular localization:</b>	The nucleuscytoplasmicThe cell membraneExtracellular matrixSecretory protein
<b>Form:</b>	Lyophilized or Liquid
<b>Concentration:</b>	1mg/ml
<b>immunogen:</b>	KLH conjugated synthetic peptide derived from human HEATR6:401-500/1181
<b>Lsotype:</b>	IgG
<b>Purification:</b>	affinity purified by Protein A
<b>Storage Buffer:</b>	0.01M TBS(pH7.4) with 1% BSA, 0.03% Proclin300 and 50% Glycerol.
<b>Storage:</b>	Store at -20 °C for one year. Avoid repeated freeze/thaw cycles. The lyophilized antibody is stable at room temperature for at least one month and for greater than a year when kept at -20°C. When reconstituted in sterile pH 7.4 0.01M PBS or diluent of antibody the antibody is stable for at least two weeks at 2-4 °C.
<b>PubMed:</b>	<a href="#">PubMed</a>
<b>Product Detail:</b>	

Picture:



Sample:

SH-SY5Y(Human) Cell Lysate at 30 ug

U-2OS(Human) Cell Lysate at 30 ug

Primary: Anti- HEATR6 (SL8321R) at 1/1000 dilution

Secondary: IRDye800CW Goat Anti-Rabbit IgG at 1/20000 dilution

Predicted band size: 129 kD

	Observed band size: 129 kD
--	----------------------------

[www.sunlongbiotech.com](http://www.sunlongbiotech.com)