



Rabbit Anti-Proteasome 19S S5A antibody

SL8322R

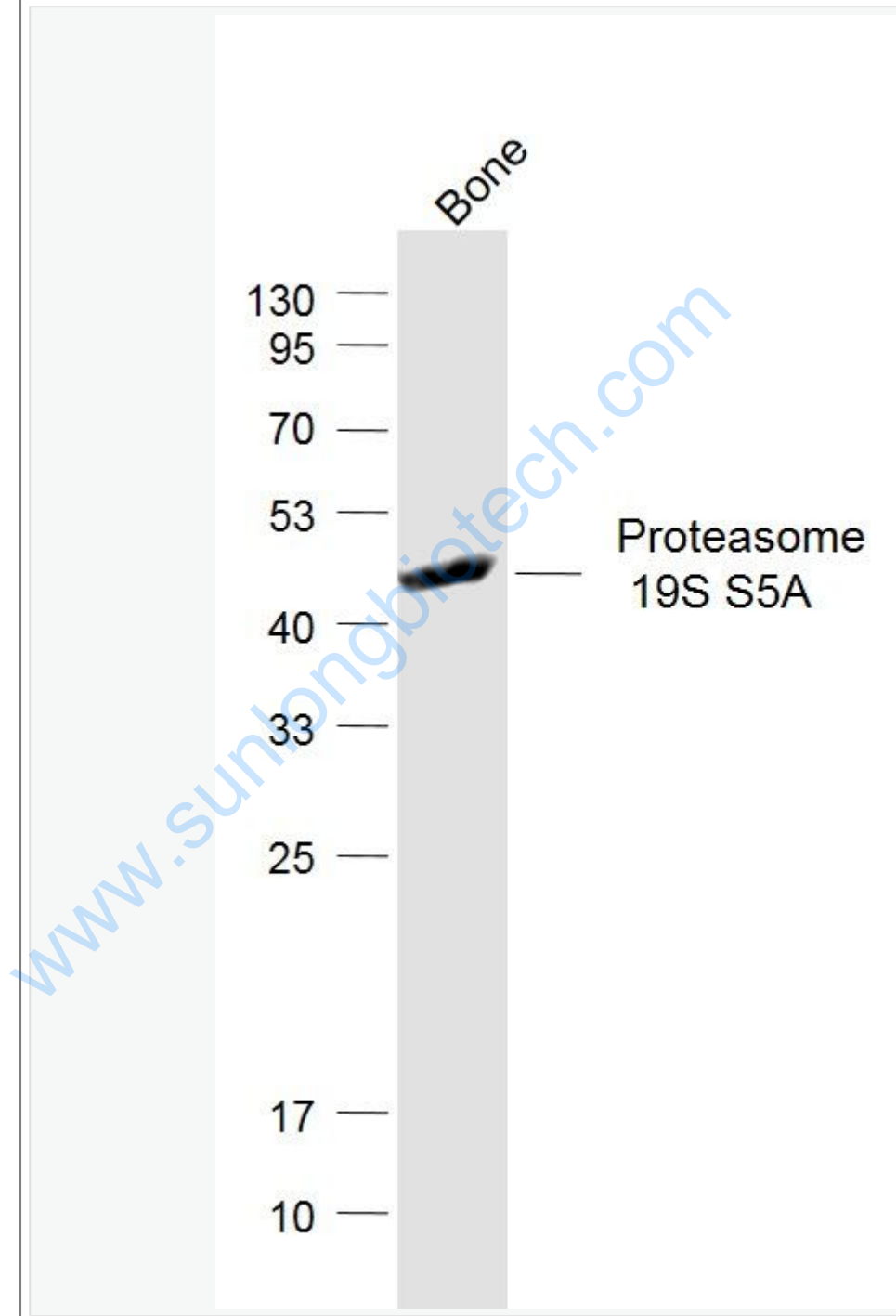
Product Name:	Proteasome 19S S5A
Chinese Name:	26S蛋白酶调节亚型S5a抗体
Alias:	26S protease subunit S5a; 26S proteasome non ATPase regulatory subunit 4; 26S proteasome non-ATPase regulatory subunit 4; 26S proteasome regulatory subunit rpn10; 26S proteasome regulatory subunit S5A; AF 1; AF; AF1; Antisecretory factor 1; ASF; DS5a; MCB 1; MCB1; Multiubiquitin chain binding protein; Multiubiquitin chain-binding protein; Prosome macropain; Proteasome (Prosome macropain) 26S subunit non ATPase 4; Proteasome 26S non ATPase subunit 4; Proteasome 26S subunit non ATPase 4; PSMD 4; PSMD4; PSMD4_HUMAN; pUB R5; pUBR5; Rpn 10; Rpn10; S5A; S5a/antisecretory factor protein.
Organism Species:	Rabbit
Clonality:	Polyclonal
React Species:	Human,Mouse,Rat,Chicken,Dog,Cow,Horse,Rabbit,Sheep,
Applications:	WB=1:500-2000ELISA=1:500-1000IHC-P=1:400-800IHC-F=1:400-800IF=1:50-200 (Paraffin sections need antigen repair) not yet tested in other applications. optimal dilutions/concentrations should be determined by the end user.
Molecular weight:	41kDa
Cellular localization:	The nucleuscytoplasmic
Form:	Lyophilized or Liquid
Concentration:	1mg/ml
immunogen:	KLH conjugated synthetic peptide derived from human Proteasome 19S S5A:101-200/377
Lsotype:	IgG
Purification:	affinity purified by Protein A
Storage Buffer:	0.01M TBS(pH7.4) with 1% BSA, 0.03% Proclin300 and 50% Glycerol.
Storage:	Store at -20 °C for one year. Avoid repeated freeze/thaw cycles. The lyophilized antibody is stable at room temperature for at least one month and for greater than a year when kept at -20°C. When reconstituted in sterile pH 7.4 0.01M PBS or diluent of antibody the antibody is stable for at least two weeks at 2-4 °C.

PubMed:	PubMed
Product Detail:	<p>Binds and presumably selects ubiquitin-conjugates for destruction. Displays selectivity for longer polyubiquitin chains. Modulates intestinal fluid secretion.</p> <p>Function: Binds and presumably selects ubiquitin-conjugates for destruction. Displays selectivity for longer polyubiquitin chains. Modulates intestinal fluid secretion.</p> <p>Subunit: The 26S proteasome is composed of a core protease, known as the 20S proteasome, capped at one or both ends by the 19S regulatory complex (RC). The RC is composed of at least 18 different subunits in two subcomplexes, the base and the lid, which form the portions proximal and distal to the 20S proteolytic core, respectively. Directly interacts with NUB1. Interacts with SQSTM1. Interacts with UBQLN4. Interacts with UBE3A.</p> <p>Post-translational modifications: Phosphorylated upon DNA damage, probably by ATM or ATR.</p> <p>Similarity: Belongs to the proteasome subunit S5A family. Contains 2 UIM (ubiquitin-interacting motif) repeats. Contains 1 VWFA domain.</p> <p>SWISS: P55036</p> <p>Gene ID: 5710</p> <p>Database links: Entrez Gene: 5710Human Entrez Gene: 19185Mouse Entrez Gene: 83499Rat Omim: 601648Human SwissProt: P55036Human SwissProt: O35226Mouse Unigene: 505059Human Unigene: 2261Mouse</p>

Important Note:

This product as supplied is intended for research use only, not for use in human, therapeutic or diagnostic applications.

Picture:



Sample:

Bone (Mouse) Lysate at 40 ug

Primary: Anti-Proteasome 19S S5A (SL8322R) at 1/1000 dilution

Secondary: IRDye800CW Goat Anti-Rabbit IgG at 1/20000 dilution

Predicted band size: 41 kD

Observed band size: 41 kD

www.sunlongbiotech.com

Lymph node

130 —
95 —
70 —
53 —
40 —
33 —
25 —
17 —
10 —

Proteasome
19S S5A

www.sunlongbiotech.com

