



Rabbit Anti-PP4R3B antibody

SL8328R

Product Name:	PP4R3B
Chinese Name:	丝氨酸/苏氨酸蛋白磷酸酶3B抗体
Alias:	Protein Phosphatase 4, Regulatory Subunit 3 Beta; smk1; FLFL2; PPP4R3B; PSY2; Serine/threonine-protein phosphatase 4 regulatory subunit 3B; SMEK 2; SMEK homolog 2; SMEK homolog 2 suppressor of mek1 (Dictyostelium); SMEK homolog 2 suppressor of mek1; FLJ31474; KIAA1387; PP4R3 beta; PP4R3B; PPP4R3 Beta; P4R3B HUMAN.
Organism Species:	Rabbit
Clonality:	Polyclonal
React Species:	Human,Mouse,Rat,Chicken,Dog,Pig,Cow,Horse,Rabbit,Sheep,
Applications:	WB=1:500-2000ELISA=1:500-1000IHC-P=1:400-800IHC-F=1:400-800IF=1:50-200 (Paraffin sections need antigen repair) not yet tested in other applications. optimal dilutions/concentrations should be determined by the end user.
Molecular weight:	97kDa
Cellular localization:	The nucleuscytoplasmic
Form:	Lyophilized or Liquid
Concentration:	1mg/ml
immunogen:	KLH conjugated synthetic peptide derived from human SMEK2/PP4R3B:701-800/849
Lsotype:	IgG
Purification:	affinity purified by Protein A
Storage Buffer:	0.01M TBS(pH7.4) with 1% BSA, 0.03% Proclin300 and 50% Glycerol.
Storage:	Store at -20 °C for one year. Avoid repeated freeze/thaw cycles. The lyophilized antibody is stable at room temperature for at least one month and for greater than a year when kept at -20°C. When reconstituted in sterile pH 7.4 0.01M PBS or diluent of antibody the antibody is stable for at least two weeks at 2-4 °C.
PubMed:	PubMed
Product Detail:	SMEK2 contains a WH1 domain. There are five named isoforms produced by alternative splicing. Mapping of a diet-induced hypercholesterolemia locus (Dihc2) in rats identified SMEK2 as a strong candidate for responsiveness to dietary cholesterol.

Function:

Regulatory subunit of serine/threonine-protein phosphatase 4 (PP4). May regulate the activity of PPP4C at centrosomal microtubule organizing centers.

Subunit:

Serine/threonine-protein phosphatase 4 (PP4) occurs in different assemblies of the catalytic and one or more regulatory subunits. Component of the PP4 complex PPP4C-PPP4R2-PPP4R3B.

Subcellular Location:

Cytoplasm. Cytoskeleton. Centrosome. Nucleus. Note: In interphase localized in the cytoplasm and (with higher levels) the nucleus. During metaphase located in pericentriolar regions.

Tissue Specificity:

Moderately expressed in tissues and specific brain regions examined.

Similarity:

Belongs to the SMEK family.
Contains 1 WH1 domain.

SWISS:

Q5MIZ7

Gene ID:

57223

Database links:

[Entrez Gene: 57223](#)Human

[Entrez Gene: 104570](#)Mouse

[Omim: 610352](#)Human

[SwissProt: Q5MIZ7](#)Human

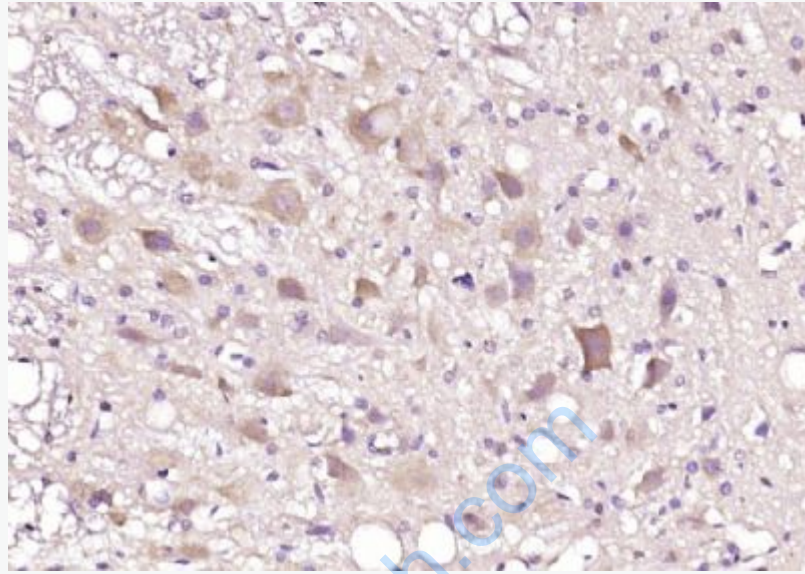
[SwissProt: Q922R5](#)Mouse

[Unigene: 516182](#)Human

[Unigene: 276386](#)Mouse

Important Note:

This product as supplied is intended for research use only, not for use in human, therapeutic or diagnostic applications.



Picture:

Paraformaldehyde-fixed, paraffin embedded (rat brain); Antigen retrieval by boiling in sodium citrate buffer (pH6.0) for 15min; Block endogenous peroxidase by 3% hydrogen peroxide for 20 minutes; Blocking buffer (normal goat serum) at 37°C for 30min; Antibody incubation with (PP4R3B) Polyclonal Antibody, Unconjugated (SL8328R) at 1:200 overnight at 4°C, followed by operating according to SP Kit(Rabbit) (sp-0023) instructions and DAB staining.