



Rabbit Anti-PANK1 antibody

SL8337R

Product Name:	PANK1
Chinese Name:	泛酸激酶1抗体
Alias:	coaA; hPanK; hPanK1; PANK; PANK1; PANK1_HUMAN; PANK1a; PANK1b; PanK1beta; Pantothenate kinase 1; Pantothenate kinase; Pantothenic acid kinase 1.
Organism Species:	Rabbit
Clonality:	Polyclonal
React Species:	Human,Mouse,Rat,Dog,Pig,Cow,Sheep,
Applications:	WB=1:500-2000ELISA=1:500-1000IHC-P=1:400-800IHC-F=1:400-800IF=1:50-200 (Paraffin sections need antigen repair) not yet tested in other applications. optimal dilutions/concentrations should be determined by the end user.
Molecular weight:	64kDa
Cellular localization:	cytoplasmic
Form:	Lyophilized or Liquid
Concentration:	1mg/ml
immunogen:	KLH conjugated synthetic peptide derived from human PANK1:501-598/598
Lsotype:	IgG
Purification:	affinity purified by Protein A
Storage Buffer:	0.01M TBS(pH7.4) with 1% BSA, 0.03% Proclin300 and 50% Glycerol.
Storage:	Store at -20 °C for one year. Avoid repeated freeze/thaw cycles. The lyophilized antibody is stable at room temperature for at least one month and for greater than a year when kept at -20°C. When reconstituted in sterile pH 7.4 0.01M PBS or diluent of antibody the antibody is stable for at least two weeks at 2-4 °C.
PubMed:	PubMed
Product Detail:	The pantothenate kinase (PANK) family of proteins catalyzes the first step in coenzyme A (CoA). Pantothenate kinase 1 (PANK1) is a 598 amino acid member of the pantothenate kinase family that plays a role in the physiological regulation of the intracellular CoA concentration. Localized to the cytoplasm, PANK1 is strongly inhibited by acetyl-CoA and manyl-CoA, as well as by high concentration of non-esterified CoA (CoASH). Four known isoforms of PANK1 exist as a result of alternative

splicing events. Of these isoforms, PANK1a and PANK1b have been identified as the catalytically active isoforms. Isoform PANK1a is most highly expressed in brain, heart, kidney, liver, skeletal muscle and kidney. Isoform PANK1b is detected at much lower levels in kidney, liver, brain and testis and is not detected in heart or skeletal muscle.

Function:

Plays a role in the physiological regulation of the intracellular CoA concentration (By similarity).

Subcellular Location:

Cytoplasm.

Tissue Specificity:

Isoform 1 is expressed at high levels in brain, heart, kidney, liver, skeletal muscle and testis. Isoform 2 is detected at much lower levels in kidney, liver, brain and testis and is not detected in heart or skeletal muscle.

Similarity:

Belongs to the type II pantothenate kinase family.

SWISS:

Q8TE04

Gene ID:

53354

Database links:

[Entrez Gene: 53354](#)Human

[Entrez Gene: 75735](#)Mouse

[Entrez Gene: 294088](#)Rat

[Omim: 606160](#)Human

[SwissProt: Q8TE04](#)Human

[SwissProt: Q8K4K6](#)Mouse

[Unigene: 376351](#)Human

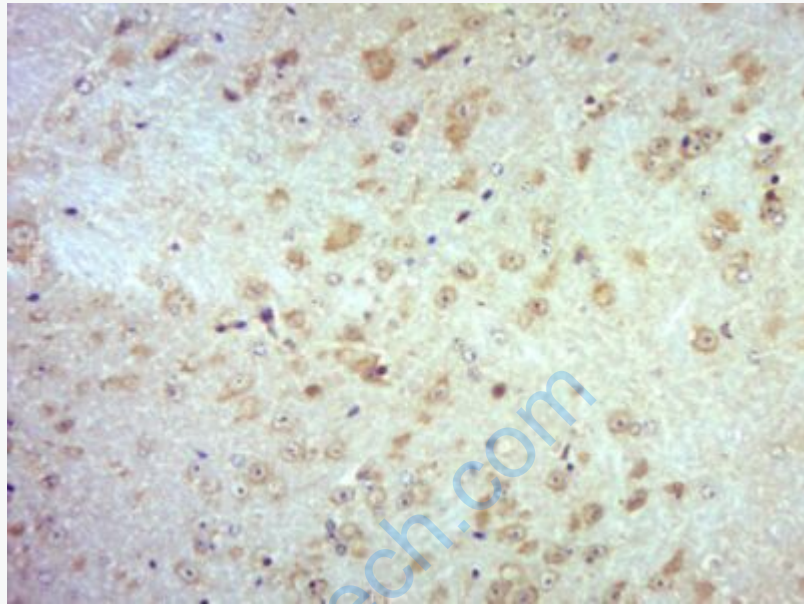
[Unigene: 24742](#)Mouse

[Unigene: 6581](#)Rat

Important Note:

This product as supplied is intended for research use only, not for use in human,

therapeutic or diagnostic applications.



Picture:

Paraformaldehyde-fixed, paraffin embedded (Mouse brain); Antigen retrieval by boiling in sodium citrate buffer (pH6.0) for 15min; Block endogenous peroxidase by 3% hydrogen peroxide for 20 minutes; Blocking buffer (normal goat serum) at 37°C for 30min; Antibody incubation with (PANK1) Polyclonal Antibody, Unconjugated (SL8337R) at 1:400 overnight at 4°C, followed by operating according to SP Kit(Rabbit) (sp-0023) instructions and DAB staining.