



## Rabbit Anti-BTRC2 antibody

SL8387R

<b>Product Name:</b>	BTRC2
<b>Chinese Name:</b>	BTRC2蛋白抗体
<b>Alias:</b>	beta Transducin Repeat Containing Protein 2; BTRC2; BTRCP2; F-box and WD-40 Domain Protein 1B; F-box Protein FBW1B; FBW1B; FBXW1B; FBW1B HUMAN.
<b>Organism Species:</b>	Rabbit
<b>Clonality:</b>	Polyclonal
<b>React Species:</b>	Human,Mouse,Rat,Chicken,Pig,Cow,Horse,Zebrafish,
<b>Applications:</b>	WB=1:500-2000ELISA=1:500-1000IHC-P=1:400-800IHC-F=1:400-800IF=1:50-200 (Paraffin sections need antigen repair) not yet tested in other applications. optimal dilutions/concentrations should be determined by the end user.
<b>Molecular weight:</b>	62kDa
<b>Cellular localization:</b>	The nucleocytoplasmic
<b>Form:</b>	Lyophilized or Liquid
<b>Concentration:</b>	1mg/ml
<b>immunogen:</b>	KLH conjugated synthetic peptide derived from human BTRC2/beta TRCP2:1-100/542
<b>Lsotype:</b>	IgG
<b>Purification:</b>	affinity purified by Protein A
<b>Storage Buffer:</b>	0.01M TBS(pH7.4) with 1% BSA, 0.03% Proclin300 and 50% Glycerol.
<b>Storage:</b>	Store at -20 °C for one year. Avoid repeated freeze/thaw cycles. The lyophilized antibody is stable at room temperature for at least one month and for greater than a year when kept at -20°C. When reconstituted in sterile pH 7.4 0.01M PBS or diluent of antibody the antibody is stable for at least two weeks at 2-4 °C.
<b>PubMed:</b>	<a href="#">PubMed</a>
<b>Product Detail:</b>	Beta TRCP2 is a member of the F-box protein family which is characterized by an approximately 40 amino acid motif, the F-box. The F-box proteins constitute one of the four subunits of ubiquitin protein ligase complex called SCFs (SKP1-cullin-F-box), which function in phosphorylation-dependent ubiquitination. The F-box proteins are divided into 3 classes: Fbws containing WD-40 domains, Fbls containing leucine-rich repeats, and Fbxs containing either different protein-protein interaction modules or no

recognizable motifs. The protein encoded by this gene belongs to the F-box class and, in addition to an F-box, contains multiple WD40 repeats. This gene contains at least 14 exons, and its alternative splicing generates 3 transcript variants diverging at the presence/absence of two alternate exons.

**Function:**

Substrate recognition component of a SCF (SKP1-CUL1-F-box protein) E3 ubiquitin-protein ligase complex which mediates the ubiquitination and subsequent proteasomal degradation of target proteins. Recognizes and binds to phosphorylated target proteins. SCF(BTRC) mediates the ubiquitination of CTNNB1 and participates in Wnt signaling. SCF(BTRC) mediates the ubiquitination of NFKBIA, NFKBIB and NFKBIE; the degradation frees the associated NFKB1 to translocate into the nucleus and to activate transcription. Ubiquitination of NFKBIA occurs at 'Lys-21' and 'Lys-22'. SCF(BTRC) mediates the ubiquitination of phosphorylated NFKB1/nuclear factor NF-kappa-B p105 subunit, ATF4, SMAD3, SMAD4, CDC25A, DLG1, FBXO5 and probably NFKB2. SCF(BTRC) mediates the ubiquitination of phosphorylated SNAI1. May be involved in ubiquitination and subsequent proteasomal degradation through a DBB1-CUL4 E3 ubiquitin-protein ligase. Required for activation of NFKB-mediated transcription by IL1B, MAP3K14, MAP3K1, IKBKB and TNF. Required for proteolytic processing of GLI3.

**Subunit:**

Self-associates. Component of the SCF(FBXW11) complex formed of CUL1, SKP1, RBX1 and a FBXW11 dimer. Interacts with BTRC, BST2, PER1, RCAN1 and USP47. Interacts with phosphorylated ubiquitination substrate PER2 (By similarity). Interacts with phosphorylated ubiquitination substrates CTNNB1, NFKBIA, IFNAR1; the interaction requires the phosphorylation of the two serine residues in the substrates' destruction motif D-S-G-X(2,3,4)-S. Interacts with TRIM21.

**Subcellular Location:**

Cytoplasm. Nucleus.

**Similarity:**

Contains 1 F-box domain.

Contains 7 WD repeats.

**SWISS:**

Q9UKB1

**Gene ID:**

23291

**Database links:**

[Entrez Gene: 23291](#) Human

[Entrez Gene: 103583](#)Mouse

[Olim: 605651](#)Human

[SwissProt: Q9UKB1](#)Human

[SwissProt: Q5SRY7](#)Mouse

[Unigene: 484138](#)Human

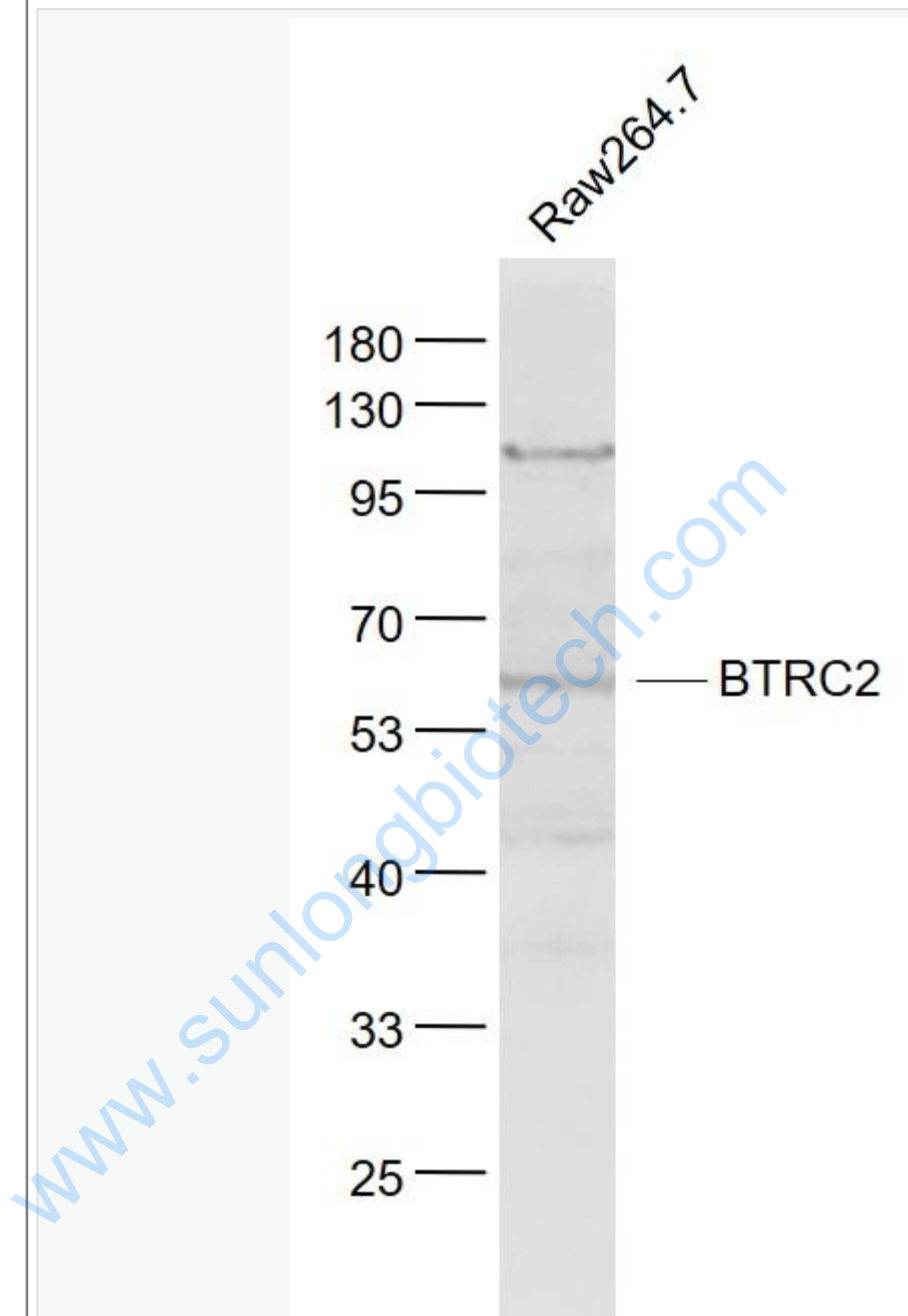
[Unigene: 28017](#)Mouse

**Important Note:**

This product as supplied is intended for research use only, not for use in human, therapeutic or diagnostic applications.

[www.sunlongbiotech.com](http://www.sunlongbiotech.com)

Picture:



Sample:

Raw264.7(Mouse) Cell Lysate at 30 ug

Primary: Anti- BTRC2 (SL8387R) at 1/1000 dilution

Secondary: IRDye800CW Goat Anti-Rabbit IgG at 1/20000 dilution

Predicted band size: 62 kD

	Observed band size: 62 kD
--	---------------------------

[www.sunlongbiotech.com](http://www.sunlongbiotech.com)