



## Rabbit Anti-SKP1 antibody

SL8389R

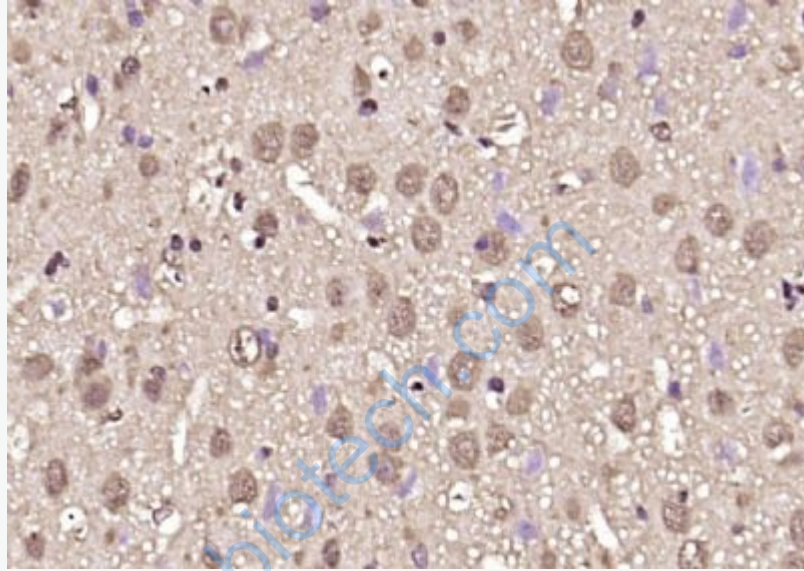
<b>Product Name:</b>	SKP1
<b>Chinese Name:</b>	S期激酶相关蛋白1抗体
<b>Alias:</b>	Cyclin A/CDK2 associated p19; Cyclin A/CDK2 associated protein p19; Cyclin-A/CDK2-associated protein p19; EMC 19; EMC19; OCP 2; OCP II; OCP II protein; OCP-2; OCP-II; OCP2; OCPII; organ of Corti protein 2; Organ of Corti protein II; p19A; p19skp1; RNA polymerase II elongation factor like protein; RNA polymerase II elongation factor like protein OCP2; RNA polymerase II elongation factor-like protein; S phase kinase associated protein 1; S phase kinase associated protein 1A; S phase kinase associated protein 1A p19A; S-phase kinase-associated protein 1; SIII; Skp 1; SKP 1A; skp1; SKP1_HUMAN; SKP1A; TCEB1L; Transcription elongation factor B (SIII) polypeptide 1 like; Transcription Elongation Factor B 1 like; Transcription Elongation Factor B 1-like; Transcription elongation factor B; Transcription elongation factor B SIII polypeptide 1 like.
<b>Organism Species:</b>	Rabbit
<b>Clonality:</b>	Polyclonal
<b>React Species:</b>	Human,Mouse,Rat,Sheep,
<b>Applications:</b>	ELISA=1:500-1000IHC-P=1:400-800IHC-F=1:400-800IF=1:50-200 (Paraffin sections need antigen repair) not yet tested in other applications. optimal dilutions/concentrations should be determined by the end user.
<b>Molecular weight:</b>	19kDa
<b>Cellular localization:</b>	The nucleuscytoplasmicExtracellular matrixSecretory protein
<b>Form:</b>	Lyophilized or Liquid
<b>Concentration:</b>	1mg/ml
<b>immunogen:</b>	KLH conjugated synthetic peptide derived from human SKP1:81-163/163
<b>Lsotype:</b>	IgG
<b>Purification:</b>	affinity purified by Protein A
<b>Storage Buffer:</b>	0.01M TBS(pH7.4) with 1% BSA, 0.03% Proclin300 and 50% Glycerol.
<b>Storage:</b>	Store at -20 °C for one year. Avoid repeated freeze/thaw cycles. The lyophilized antibody is stable at room temperature for at least one month and for greater than a year

	when kept at -20°C. When reconstituted in sterile pH 7.4 0.01M PBS or diluent of antibody the antibody is stable for at least two weeks at 2-4 °C.
<b>PubMed:</b>	<a href="#">PubMed</a>
<b>Product Detail:</b>	<p>Essential component of the SCF (SKP1-CUL1-F-box protein) ubiquitin ligase complex, which mediates the ubiquitination of proteins involved in cell cycle progression, signal transduction and transcription. In the SCF complex, serves as an adapter that links the F-box protein to CUL1. SCF(BTRC) mediates the ubiquitination of NFKBIA at 'Lys-21' and 'Lys-22'; the degradation frees the associated NFKB1-RELA dimer to translocate into the nucleus and to activate transcription. SCF(Cyclin F) directs ubiquitination of CP110.</p> <p><b>Function:</b> Essential component of the SCF (SKP1-CUL1-F-box protein) ubiquitin ligase complex, which mediates the ubiquitination of proteins involved in cell cycle progression, signal transduction and transcription. In the SCF complex, serves as an adapter that links the F-box protein to CUL1. SCF(BTRC) mediates the ubiquitination of NFKBIA at 'Lys-21' and 'Lys-22'; the degradation frees the associated NFKB1-RELA dimer to translocate into the nucleus and to activate transcription. SCF(Cyclin F) directs ubiquitination of CP110.</p> <p><b>Subunit:</b> Component of an E3 ubiquitin ligase complex containing UBE2D1, SIAH1, CACYBP/SIP, SKP1, APC and TBL1X. Component of the SCF(BTRC) complex, composed of SKP1, CUL1 and BTRC. Part of a SCF(BTRC)-like complex lacking CUL1, which is associated with phosphorylated NFKBIA and RELA; RELA interacts directly with NFKBIA. Component of the SCF(FBXO44) complex, composed of SKP1, CUL1 and FBXO44. Identified in a complex with SKP2, CKS1B and CDKN1B. Interacts with the cyclin A/CDK2 complex. Part of a SCF-like complex consisting of CUL7, RBX1, SKP1 and FBXW8. Part of several SCF complexes containing SKP1 and one of the F-box proteins. Component of a SCF(SKP2)-like complex containing CUL1, SKP1, TRIM21 and SKP2. Interacts with FBXO2, FBXO4, FBXW7 and TRIM21. Interacts with FBXO45 (By similarity). Component of the SCF(FBXO17) complex, composed of SKP1, CUL1 and FBXO17. Component of the SCF(FBXO27) complex, composed of SKP1, CUL1 and FBXO27. Component of the SCF(Cyclin F) complex consisting of CUL1, RBX1, SKP1 and CCNF.</p> <p><b>Similarity:</b> Belongs to the SKP1 family.</p> <p><b>SWISS:</b> P63208</p> <p><b>Gene ID:</b> 6500</p> <p><b>Database links:</b></p>

UniProtKB/Swiss-Prot: P63208.2

**Important Note:**

This product as supplied is intended for research use only, not for use in human, therapeutic or diagnostic applications.



**Picture:**

Paraformaldehyde-fixed, paraffin embedded (rat brain); Antigen retrieval by boiling in sodium citrate buffer (pH6.0) for 15min; Block endogenous peroxidase by 3% hydrogen peroxide for 20 minutes; Blocking buffer (normal goat serum) at 37°C for 30min; Antibody incubation with (SKP1) Polyclonal Antibody, Unconjugated (SL8389R) at 1:200 overnight at 4°C, followed by operating according to SP Kit(Rabbit) (sp-0023) instructions and DAB staining.