



Rabbit Anti-Fbx15 antibody

SL8396R

Product Name:	Fbx15
Chinese Name:	Fbx15蛋白抗体
Alias:	F box protein 15; F-box only protein 15; F-box protein 15; Fbxo15; MGC39671; FBX15 HUMAN.
Organism Species:	Rabbit
Clonality:	Polyclonal
React Species:	Human,Mouse,Rat,Pig,
Applications:	ELISA=1:500-1000IHC-P=1:400-800IHC-F=1:400-800IF=1:50-200 (Paraffin sections need antigen repair) not yet tested in other applications. optimal dilutions/concentrations should be determined by the end user.
Molecular weight:	57kDa
Cellular localization:	cytoplasmic
Form:	Lyophilized or Liquid
Concentration:	1mg/ml
immunogen:	KLH conjugated synthetic peptide derived from human Fbx15:101-200/510
Lsotype:	IgG
Purification:	affinity purified by Protein A
Storage Buffer:	0.01M TBS(pH7.4) with 1% BSA, 0.03% Proclin300 and 50% Glycerol.
Storage:	Store at -20 °C for one year. Avoid repeated freeze/thaw cycles. The lyophilized antibody is stable at room temperature for at least one month and for greater than a year when kept at -20°C. When reconstituted in sterile pH 7.4 0.01M PBS or diluent of antibody the antibody is stable for at least two weeks at 2-4 °C.
PubMed:	PubMed
Product Detail:	FBXO15, also known as FBX15, is a 434 amino acid protein that contains one C-terminal F-box domain and belongs to the F-box family of proteins. F-box proteins are critical components of the SCF (Skp1-CUL-1-F-box protein) type E3 ubiquitin ligase complex and are involved in substrate recognition and recruitment for ubiquitination. They are members of a larger family of proteins that are involved in the regulation of a wide variety of cellular processes (including the cell cycle, immune response, signaling

cascades and developmental processes) through the targeting of proteins, such as cyclins, cyclin-dependent kinase inhibitors, I κ B- α and β -catenin, for degradation by the proteasome after ubiquitination. Via its F-box domain, FBXO15 can directly interact with Skp1 p19 and CUL-1. In addition, FBXO15 is a target of the transcription factor Oct-3/4, however, it does not appear to be essential for early development and fertility.

Function:

Substrate-recognition component of the SCF (SKP1-CUL1-F-box protein)-type E3 ubiquitin ligase complex (By similarity).

Subunit:

Directly interacts with SKP1 and CUL1 (By similarity).

Similarity:

Contains 1 F-box domain.

SWISS:

Q8NCQ5

Gene ID:

201456

Database links:

[Entrez Gene: 201456](#)Human

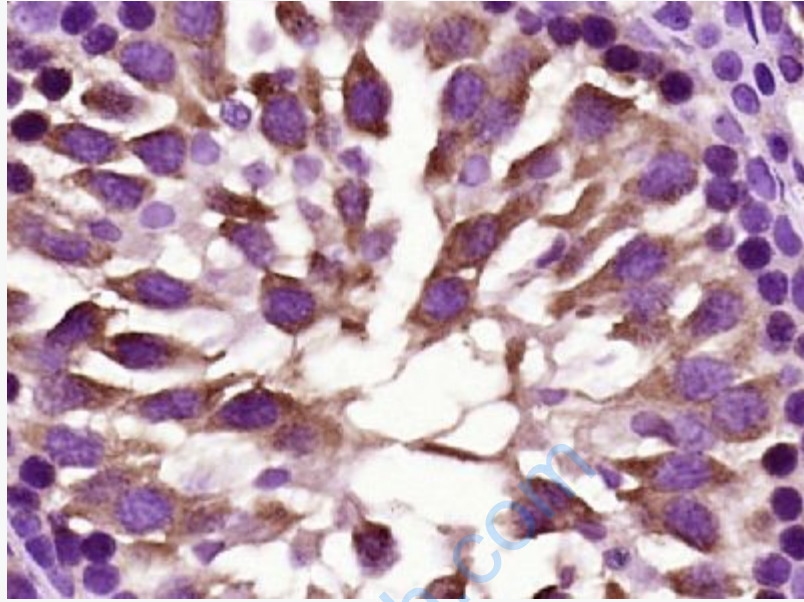
[Omim: 609093](#)Human

[SwissProt: Q8NCQ5](#)Human

[Unigene: 664011](#)Human

Important Note:

This product as supplied is intended for research use only, not for use in human, therapeutic or diagnostic applications.



Picture:

Paraformaldehyde-fixed, paraffin embedded (Rat testis); Antigen retrieval by boiling in sodium citrate buffer (pH6.0) for 15min; Block endogenous peroxidase by 3% hydrogen peroxide for 20 minutes; Blocking buffer (normal goat serum) at 37°C for 30min; Antibody incubation with (Fbx15) Polyclonal Antibody, Unconjugated (SL8396R) at 1:400 overnight at 4°C, followed by operating according to SP Kit(Rabbit) (sp-0023) instructions and DAB staining.