

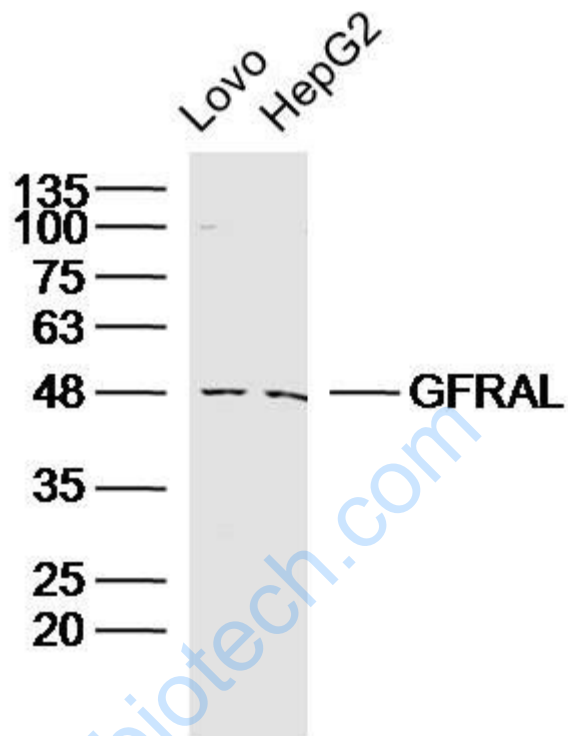


Rabbit Anti-GFRAL antibody

SL8406R

Product Name:	GFRAL
Chinese Name:	胶质细胞源性神经营养因子受体 α 1样蛋白抗体
Alias:	GDNF family receptor alpha-like; Gfral; GFRAL_HUMAN; UNQ9356/PRO34128; UNQ9356; bA360D14.1; C6orf144.
Organism Species:	Rabbit
Clonality:	Polyclonal
React Species:	Human,Mouse,Rat,Horse,Rabbit,
Applications:	WB=1:500-2000ELISA=1:500-1000 not yet tested in other applications. optimal dilutions/concentrations should be determined by the end user.
Molecular weight:	42kDa
Cellular localization:	The cell membrane
Form:	Lyophilized or Liquid
Concentration:	1mg/ml
immunogen:	KLH conjugated synthetic peptide derived from human GFRAL:151-250/394
Lsotype:	IgG
Purification:	affinity purified by Protein A
Storage Buffer:	0.01M TBS(pH7.4) with 1% BSA, 0.03% Proclin300 and 50% Glycerol.
Storage:	Store at -20 °C for one year. Avoid repeated freeze/thaw cycles. The lyophilized antibody is stable at room temperature for at least one month and for greater than a year when kept at -20°C. When reconstituted in sterile pH 7.4 0.01M PBS or diluent of antibody the antibody is stable for at least two weeks at 2-4 °C.
PubMed:	PubMed
Product Detail:	

Picture:



Sample:

Lovo Cell (Human) Lysate at 30 ug

HepG2 Cell(Human)Lysate at 30 ug

Primary: Anti- GFRAL (SL8406R)at 1/300 dilution

Secondary: IRDye800CW Goat Anti-Rabbit IgG at 1/20000 dilution

Predicted band size: 42kD

Observed band size: 47kD