



## Rabbit Anti-FBXL17 antibody

SL8469R

<b>Product Name:</b>	FBXL17
<b>Chinese Name:</b>	FBXL17蛋白抗体
<b>Alias:</b>	F box and leucine rich repeat protein 17; F box only protein 13; F box/LRR repeat protein 17; F-box and leucine-rich repeat protein 17; F-box only protein 13; F-box/LRR-repeat protein 17; FBL17; FBX13; Fbx117; FBXO13; FBXL13; FXL17_HUMAN; DKFZP434C1715.
<b>Organism Species:</b>	Rabbit
<b>Clonality:</b>	Polyclonal
<b>React Species:</b>	Human,Mouse,Rat,Chicken,Dog,Pig,Cow,Horse,Rabbit,Sheep,
<b>Applications:</b>	WB=1:500-2000ELISA=1:500-1000IHC-P=1:400-800IHC-F=1:400-800IF=1:50-200 (Paraffin sections need antigen repair) not yet tested in other applications. optimal dilutions/concentrations should be determined by the end user.
<b>Molecular weight:</b>	76kDa
<b>Cellular localization:</b>	The nucleus
<b>Form:</b>	Lyophilized or Liquid
<b>Concentration:</b>	1mg/ml
<b>immunogen:</b>	KLH conjugated synthetic peptide derived from human FBXL17:451-550/701
<b>Lsotype:</b>	IgG
<b>Purification:</b>	affinity purified by Protein A
<b>Storage Buffer:</b>	0.01M TBS(pH7.4) with 1% BSA, 0.03% Proclin300 and 50% Glycerol.
<b>Storage:</b>	Store at -20 °C for one year. Avoid repeated freeze/thaw cycles. The lyophilized antibody is stable at room temperature for at least one month and for greater than a year when kept at -20°C. When reconstituted in sterile pH 7.4 0.01M PBS or diluent of antibody the antibody is stable for at least two weeks at 2-4 °C.
<b>PubMed:</b>	<a href="#">PubMed</a>
<b>Product Detail:</b>	Members of the F-box protein family, such as FBXL17, are characterized by an approximately 40-amino acid F-box motif. SCF complexes, formed by SKP1 (MIM 601434), cullin (see CUL1; MIM 603134), and F-box proteins, act as protein-ubiquitin ligases. F-box proteins interact with SKP1 through the F box, and they interact with

ubiquitination targets through other protein interaction domains (Jin et al., 2004 [PubMed 15520277]).[supplied by OMIM, Mar 2008]

**Function:**

Substrate-recognition component of the SCF (SKP1-CUL1-F-box protein)-type E3 ubiquitin ligase complex.

**Subunit:**

Interacts with SKP1 and CUL1

**Similarity:**

Contains 1 F-box domain.

**SWISS:**

Q9UF56

**Gene ID:**

64839

**Database links:**

[Entrez Gene: 64839](#) Human

[Entrez Gene: 50758](#) Mouse

[Entrez Gene: 316663](#) Rat

[Omim: 609083](#) Human

[SwissProt: Q9UF56](#) Human

[SwissProt: Q9QZN1](#) Mouse

[Unigene: 657225](#) Human

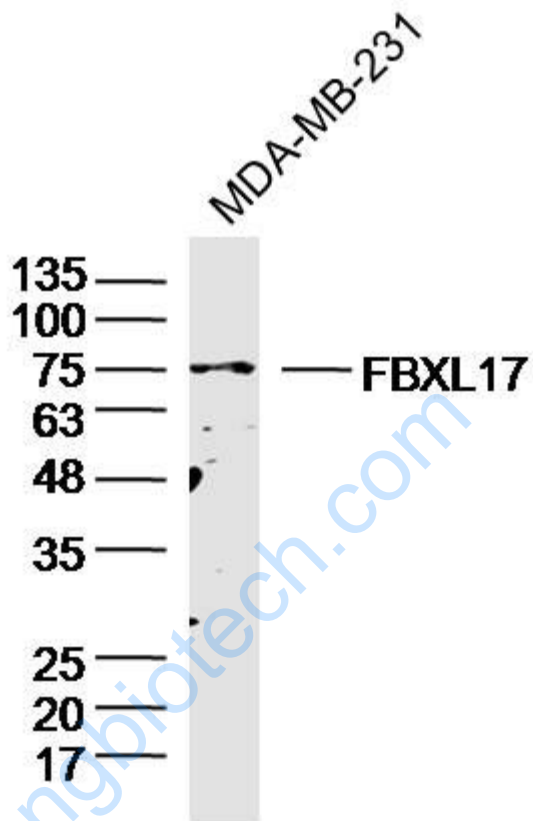
[Unigene: 721914](#) Human

[Unigene: 136366](#) Mouse

**Important Note:**

This product as supplied is intended for research use only, not for use in human, therapeutic or diagnostic applications.

Picture:



Sample: MDA-MB-231 cell (Human) Lysate at 30 ug

Primary: Anti-FBXL17 (SL8469R) at 1/300 dilution

Secondary: IRDye800CW Goat Anti-Rabbit IgG at 1/20000 dilution

Predicted band size: 76kD

Observed band size: 76kD