



## Rabbit Anti-FBXO36 antibody

SL8470R

<b>Product Name:</b>	FBXO36
<b>Chinese Name:</b>	FBXO36 F-box蛋白相关蛋白36抗体
<b>Alias:</b>	F box only protein 36; F box protein 36; F-box only protein 36; Fbx 36; Fbx36; FBX36 HUMAN; FBXO 36; Fbxo36; FLJ37592; FLJ41090.
<b>Organism Species:</b>	Rabbit
<b>Clonality:</b>	Polyclonal
<b>React Species:</b>	Human,Mouse,Rat,Dog,Cow,Horse,Sheep,
<b>Applications:</b>	WB=1:500-2000ELISA=1:500-1000IHC-P=1:400-800IHC-F=1:400-800IF=1:50-200 (Paraffin sections need antigen repair) not yet tested in other applications. optimal dilutions/concentrations should be determined by the end user.
<b>Molecular weight:</b>	22kDa
<b>Cellular localization:</b>	cytoplasmic
<b>Form:</b>	Lyophilized or Liquid
<b>Concentration:</b>	1mg/ml
<b>immunogen:</b>	KLH conjugated synthetic peptide derived from human FBXO6:1-100/188
<b>Lsotype:</b>	IgG
<b>Purification:</b>	affinity purified by Protein A
<b>Storage Buffer:</b>	0.01M TBS(pH7.4) with 1% BSA, 0.03% Proclin300 and 50% Glycerol.
<b>Storage:</b>	Store at -20 °C for one year. Avoid repeated freeze/thaw cycles. The lyophilized antibody is stable at room temperature for at least one month and for greater than a year when kept at -20°C. When reconstituted in sterile pH 7.4 0.01M PBS or diluent of antibody the antibody is stable for at least two weeks at 2-4 °C.
<b>PubMed:</b>	<a href="#">PubMed</a>
<b>Product Detail:</b>	FBXO36 is a 188 amino acid protein that contains one forty amino acid F-box region, making it a member of the F-box family. F-box proteins are critical components of the SCF (Skp1-CUL-1-F-box protein) type E3 ubiquitin ligase complex and are involved in substrate recognition and recruitment for ubiquitination. F-box proteins are members of a large family that regulates cell cycle, immune response, signaling cascades and developmental programs by targeting proteins, such as cyclins, cyclin-dependent kinase

inhibitors, I $\kappa$ B- $\beta$  and  $\beta$ -catenin, for degradation by the proteasome after ubiquitination. Functioning as a component of the SCF complex, FBXO36 is thought to recognize and bind to select phosphorylated proteins, thereby promoting their ubiquitination and subsequent degradation.

**Function:**

Substrate-recognition component of the SCF (SKP1-CUL1-F-box protein)-type E3 ubiquitin ligase complex

**Subunit:**

Directly interacts with SKP1 and CUL1

**Similarity:**

Contains 1 F-box domain.

**SWISS:**

Q9NRD1

**Gene ID:**

26270

**Database links:**

[Entrez Gene: 26270](#)Human

[Omim: 605647](#)Human

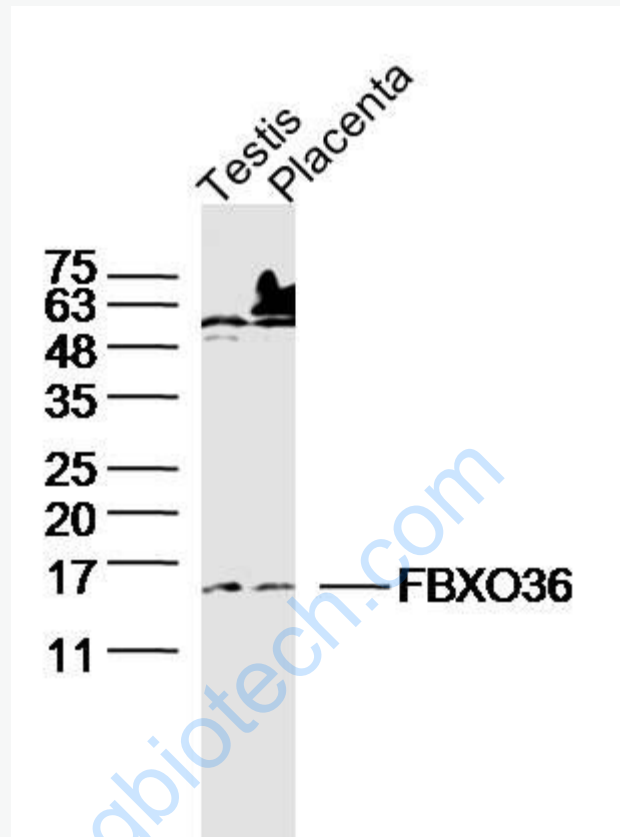
[SwissProt: Q9NRD1](#)Human

[Unigene: 464419](#)Human

**Important Note:**

This product as supplied is intended for research use only, not for use in human, therapeutic or diagnostic applications.

Picture:



Sample:

Testis (mouse) Lysate at 40 ug

placenta (mouse) Lysate at 40 ug

Primary: Anti- FBXO36(SL8470R)at 1/300 dilution

Secondary: IRDye800CW Goat Anti-Rabbit IgG at 1/20000 dilution

Predicted band size: 22kD

Observed band size: 16 kD