



Rabbit Anti-FBXO33 antibody

SL8471R

Product Name:	FBXO33
Chinese Name:	F-box蛋白相关蛋白33抗体
Alias:	F box only protein 33; Fbx 33; Fbx-33; Fbx33; FBX33 HUMAN.
Organism Species:	Rabbit
Clonality:	Polyclonal
React Species:	Human,Mouse,Rat,Dog,Pig,Cow,Horse,Rabbit,Sheep,
Applications:	ELISA=1:500-1000IHC-P=1:400-800IHC-F=1:400-800IF=1:50-200 (Paraffin sections need antigen repair) not yet tested in other applications. optimal dilutions/concentrations should be determined by the end user.
Molecular weight:	63kDa
Cellular localization:	The nucleuscytoplasmic
Form:	Lyophilized or Liquid
Concentration:	1mg/ml
immunogen:	KLH conjugated synthetic peptide derived from human FBXO33:331-430/555
Lsotype:	IgG
Purification:	affinity purified by Protein A
Storage Buffer:	0.01M TBS(pH7.4) with 1% BSA, 0.03% Proclin300 and 50% Glycerol.
Storage:	Store at -20 °C for one year. Avoid repeated freeze/thaw cycles. The lyophilized antibody is stable at room temperature for at least one month and for greater than a year when kept at -20°C. When reconstituted in sterile pH 7.4 0.01M PBS or diluent of antibody the antibody is stable for at least two weeks at 2-4 °C.
PubMed:	PubMed
Product Detail:	Members of the F-box protein family, such as FBXO33, are characterized by an approximately 40-amino acid F-box motif. SCF complexes, formed by SKP1, cullin and F-box proteins act as protein-ubiquitin ligases and mediates the ubiquitination and subsequent proteasomal degradation of target proteins. FBXO33 probably recognizes and binds to phosphorylated target proteins. Function:

Substrate recognition component of a (SKP1-CUL1-F-box protein) E3 ubiquitin-protein ligase complex which mediates the ubiquitination and subsequent proteasomal degradation of target proteins. Probably recognizes and binds to phosphorylated target proteins. Recognizes YBX1 (By similarity).

Subunit:

Part of the SCF (SKP1-CUL1-F-box) E3 ubiquitin-protein ligase complex SCF(FBXO33) formed of CUL1, SKP1, RBX1 and FBXO33. Interacts via its N-terminus with YBX1 CSD domain. Directly interacts with SKP1 and CUL1 (By similarity).

Similarity:

Contains 1 F-box domain.

SWISS:

Q7Z6M2

Gene ID:

254170

Database links:

[Entrez Gene: 254170](#)Human

[Entrez Gene: 70611](#)Mouse

[Entrez Gene: 314157](#)Rat

[Omim: 609103](#)Human

[SwissProt: Q7Z6M2](#)Human

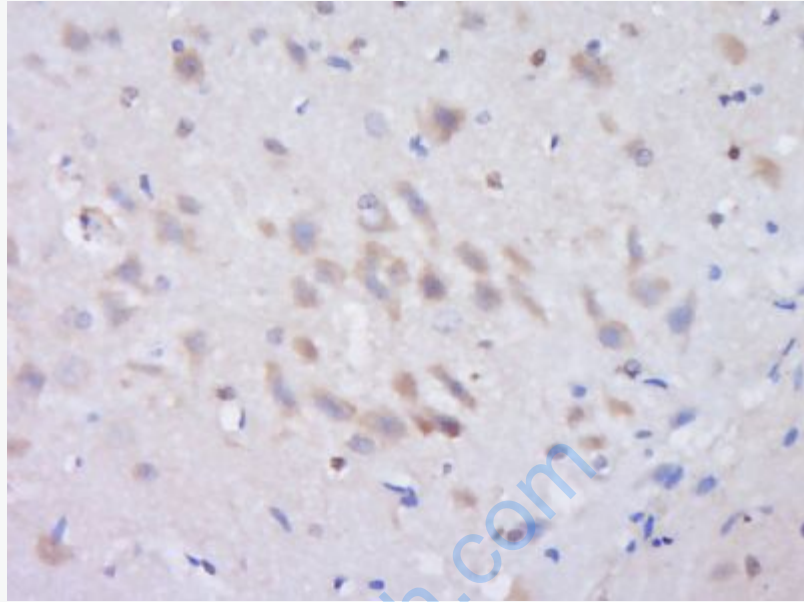
[SwissProt: Q8VE08](#)Mouse

[Unigene: 146632](#)Human

[Unigene: 311026](#)Mouse

Important Note:

This product as supplied is intended for research use only, not for use in human, therapeutic or diagnostic applications.



Picture:

Paraformaldehyde-fixed, paraffin embedded (Rat brain); Antigen retrieval by boiling in sodium citrate buffer (pH6.0) for 15min; Block endogenous peroxidase by 3% hydrogen peroxide for 20 minutes; Blocking buffer (normal goat serum) at 37°C for 30min; Antibody incubation with (FBXO33) Polyclonal Antibody, Unconjugated (SL8471R) at 1:400 overnight at 4°C, followed by operating according to SP Kit(Rabbit) (sp-0023) instructions and DAB staining.