



Rabbit Anti-FBXL20 antibody

SL8473R

Product Name:	FBXL20
Chinese Name:	FBXL20蛋白抗体
Alias:	F box/LRR repeat protein 20; F box/LRR repeat protein 2 like; F box/LRR repeat protein 20; Fbl2; Fbl20; F box and leucine rich repeat protein 20; MGC15482; SCR; SCRAPPER; FXL20_HUMAN.
Organism Species:	Rabbit
Clonality:	Polyclonal
React Species:	Human,Mouse,Rat,Chicken,Dog,Cow,Rabbit,Sheep,
Applications:	WB=1:500-2000 not yet tested in other applications. optimal dilutions/concentrations should be determined by the end user.
Molecular weight:	48kDa
Cellular localization:	cytoplasmic
Form:	Lyophilized or Liquid
Concentration:	1mg/ml
immunogen:	KLH conjugated synthetic peptide derived from human FBXL20:1-100/436
Lsotype:	IgG
Purification:	affinity purified by Protein A
Storage Buffer:	0.01M TBS(pH7.4) with 1% BSA, 0.03% Proclin300 and 50% Glycerol.
Storage:	Store at -20 °C for one year. Avoid repeated freeze/thaw cycles. The lyophilized antibody is stable at room temperature for at least one month and for greater than a year when kept at -20°C. When reconstituted in sterile pH 7.4 0.01M PBS or diluent of antibody the antibody is stable for at least two weeks at 2-4 °C.
PubMed:	PubMed
Product Detail:	Members of the F-box protein family, such as FBXL20, are characterized by an approximately 40-amino acid F-box motif. SCF complexes, formed by SKP1 (MIM 601434), cullin (see CUL1; MIM 603134), and F-box proteins, act as protein-ubiquitin ligases. F-box proteins interact with SKP1 through the F box, and they interact with ubiquitination targets through other protein interaction domains (Jin et al., 2004 [PubMed 15520277]).[supplied by OMIM, Mar 2008]

Function:

Substrate-recognition component of the SCF (SKP1-CUL1-F-box protein)-type E3 ubiquitin ligase complex. Role in neural transmission.

Subunit:

Interacts with SKP1 and CUL1.

Subcellular Location:

Cytoplasmic.

Similarity:

Contains 1 F-box domain.

Contains 13 LRR (leucine-rich) repeats.

SWISS:

Q96IG2

Gene ID:

84961

Database links:

[Entrez Gene: 84961](#)Human

[Entrez Gene: 72194](#)Mouse

[Entrez Gene: 64039](#)Rat

[SwissProt: Q96IG2](#)Human

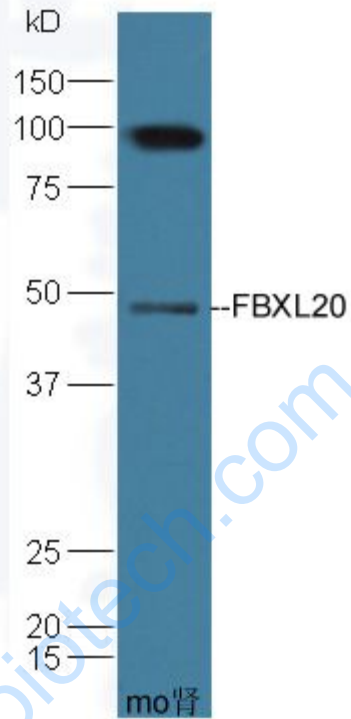
[SwissProt: Q9CZV8](#)Mouse

[SwissProt: Q9QZH7](#)Rat

Important Note:

This product as supplied is intended for research use only, not for use in human, therapeutic or diagnostic applications.

Picture:



Sample: Kidney (Mouse) Lysate at 40 ug

Primary: Anti-FBXL20 (SL8473R) at 1/300 dilution

Secondary: HRP conjugated Goat-Anti-rabbit IgG (SL8473R) at 1/5000 dilution

Predicted band size: 48 kD

Observed band size: 48 kD