



## Rabbit Anti-FBXO25 antibody

SL8491R

<b>Product Name:</b>	FBXO25
<b>Chinese Name:</b>	F-box蛋白家族FBXO25抗体
<b>Alias:</b>	F box only protein 25; F box protein 25; F box protein Fbx25; F-box only protein 25; FBX25; MGC20256; MGC51975; OTTHUMP00000115399;
<b>Organism Species:</b>	Rabbit
<b>Clonality:</b>	Polyclonal
<b>React Species:</b>	Human,Mouse,Rat,Pig,Rabbit,
<b>Applications:</b>	WB=1:500-2000ELISA=1:500-1000 not yet tested in other applications. optimal dilutions/concentrations should be determined by the end user.
<b>Molecular weight:</b>	43kDa
<b>Cellular localization:</b>	The nucleus
<b>Form:</b>	Lyophilized or Liquid
<b>Concentration:</b>	1mg/ml
<b>immunogen:</b>	KLH conjugated synthetic peptide derived from human FBXO25:55-150/367
<b>Lsotype:</b>	IgG
<b>Purification:</b>	affinity purified by Protein A
<b>Storage Buffer:</b>	0.01M TBS(pH7.4) with 1% BSA, 0.03% Proclin300 and 50% Glycerol.
<b>Storage:</b>	Store at -20 °C for one year. Avoid repeated freeze/thaw cycles. The lyophilized antibody is stable at room temperature for at least one month and for greater than a year when kept at -20°C. When reconstituted in sterile pH 7.4 0.01M PBS or diluent of antibody the antibody is stable for at least two weeks at 2-4 °C.
<b>PubMed:</b>	<a href="#">PubMed</a>
<b>Product Detail:</b>	FBXO25 is a member of the F box protein family which is characterized by an approximately 40 amino acid motif, the F box. The F box proteins constitute one of the four subunits of ubiquitin protein ligase complex called SCFs (SKP1 cullin F box), which function in phosphorylation dependent ubiquitination. The F box proteins are divided into 3 classes: Fbws containing WD 40 domains, Fbls containing leucine rich repeats, and Fbxs containing either different protein protein interaction modules or no recognizable motifs. FBXO25 belongs to the Fbxs class. There are three named

isoforms produced by alternative splicing.

FBXO25, also known as FBX25, is a 367 amino acid protein that contains one C-terminal F-box domain and belongs to the Fbx class of the F-box family of proteins. F-box proteins are critical components of the SCF (Skp1-CUL-1-F-box protein) type E3 ubiquitin ligase complex and are involved in substrate recognition and recruitment for ubiquitination. They are members of a larger family of proteins that are involved in the regulation of a wide variety of cellular processes (including the cell cycle, immune response, signaling cascades and developmental processes) through the targeting of proteins, such as cyclins, cyclin-dependent kinase inhibitors, I $\kappa$ B- $\alpha$  and  $\beta$ -catenin, for degradation by the proteasome after ubiquitination. Expressed at high levels in brain, FBXO25 localizes predominantly to the nucleus and directly interacts with Skp1 p19 and CUL-1. Disruption of the gene encoding FBXO25 can lead to X-linked mental retardation.

**Function:**

Substrate-recognition component of the SCF(SKP1-CUL1-F-box protein)-type E3 ubiquitin ligase complex. May play a role in accumulation of expanded polyglutamine (polyQ) protein huntingtin (HTT) (By similarity).

**Subunit:**

Part of a SCF (SKP1-cullin-F-box) protein ligase complex consisting of FBXO25, SKP1, CUL1 and RBX1. Interacts directly with SKP1 and CUL1. Interacts (via C-terminus) with  $\beta$ -actin (via N-terminus).

**Subcellular Location:**

Nuclear. Note=In the nucleus, associates with a subnuclear dot-like structure. Colocalized with SKP1

**Tissue Specificity:**

Expressed in all brain tissue observed.

**DISEASE:**

Note=A chromosomal aberration involving FBXO25 is a cause of X-linked mental retardation (XLMR). Translocation(X;8)(p11.22;p23.3) with SHROOM4.

**Similarity:**

Contains 1 F-box domain.

**SWISS:**

Q8TCJ0

**Gene ID:**

26260

**Database links:**

[Entrez Gene: 26260](#)Human

[Entrez Gene: 66822](#)Mouse

[Entrez Gene: 364637](#)Rat

[Ovim: 609098](#)Human

[SwissProt: Q1RMS8](#)Cow

[SwissProt: Q8TCJ0](#)Human

[SwissProt: Q9D2Y6](#)Mouse

[SwissProt: Q641X7](#)Rat

[Unigene: 438454](#)Human

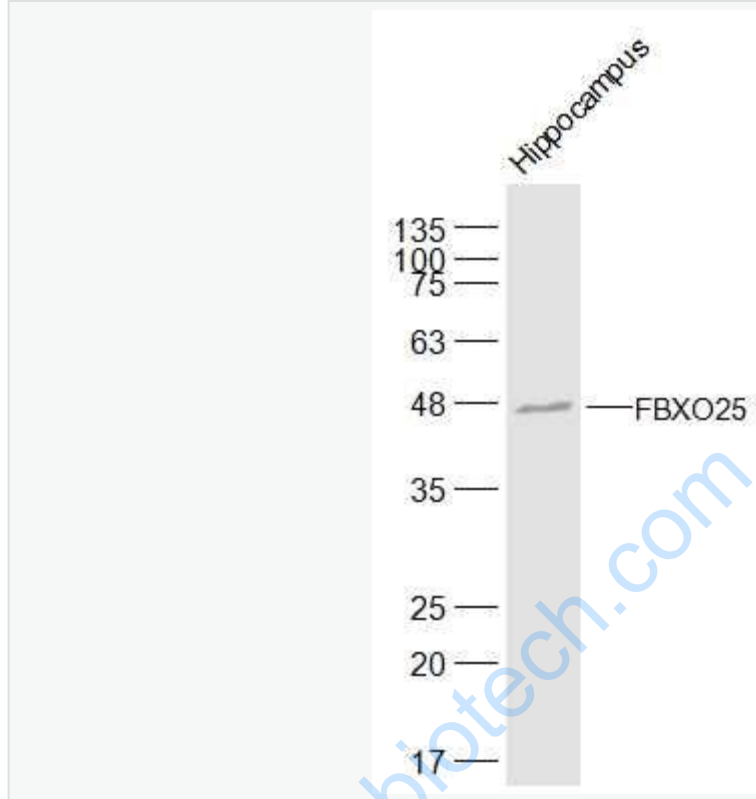
[Unigene: 37950](#)Mouse

[Unigene: 3663](#)Rat

**Important Note:**

This product as supplied is intended for research use only, not for use in human, therapeutic or diagnostic applications.

Picture:



Sample:

Hippocampus (Mouse) Lysate at 40 ug

Primary: Anti-FBXO25 (SL8491R) at 1/500 dilution

Secondary: IRDye800CW Goat Anti-Rabbit IgG at 1/20000 dilution

Predicted band size: 43 kD

Observed band size: 43 kD