



Rabbit Anti-phospho-Calmodulin 1/2/3 (Ser102) antibody

SL8519R

Product Name:	phospho-Calmodulin 1/2/3 (Ser102)
Chinese Name:	磷酸化钙调节素抗体
Alias:	p-CaM I (Ser 102); Calmodulin 1/2/3(phospho S102); Calmodulin 1/2/3; CALM 1; CALM 2; CALM 3; CALM; CALM1; CALM2; CALM3; CALML2; Calmodulin 1; Calmodulin1; CAM 1; CAM 2; CAM 3; CaM; CAM I; CAM1; CAM2; CAM3; CAMB; CAMC; CAMI; CAMIII; DD132; PHKD; Phosphorylase kinase delta; Phosphorylase kinase delta subunit; Calmodulin1; Calmodulin 1; Calmodulin-1; Calmodulin2; Calmodulin 2; Calmodulin-2; Calmodulin3; Calmodulin 3; Calmodulin-3; CALM1 HUMAN.
Organism Species:	Rabbit
Clonality:	Polyclonal
React Species:	Human, Mouse, Rat, Dog, Pig, Cow,
Applications:	WB=1:500-2000ELISA=1:500-1000IHC-P=1:400-800IHC-F=1:400-800IF=1:50-200 (Paraffin sections need antigen repair) not yet tested in other applications. optimal dilutions/concentrations should be determined by the end user.
Molecular weight:	16kDa
Cellular localization:	cytoplasmic
Form:	Lyophilized or Liquid
Concentration:	1mg/ml
immunogen:	KLH conjugated synthesised phosphopeptide derived from human CaM I around the phosphorylation site of Ser102:YI(p-S)AA
Lsotype:	IgG
Purification:	affinity purified by Protein A
Storage Buffer:	0.01M TBS(pH7.4) with 1% BSA, 0.03% Proclin300 and 50% Glycerol.
Storage:	Store at -20 °C for one year. Avoid repeated freeze/thaw cycles. The lyophilized antibody is stable at room temperature for at least one month and for greater than a year

	when kept at -20°C. When reconstituted in sterile pH 7.4 0.01M PBS or diluent of antibody the antibody is stable for at least two weeks at 2-4 °C.
PubMed:	PubMed
Product Detail:	<p>Calmodulin consists of two glycoproteins, 34 and 39 kDa, sometimes designated epithelial antigen, epithelial specific antigen, and epithelial glycoprotein. The glycoproteins are located on the cell membrane surface and in the cytoplasm of virtually all epithelial cells with the exception of most squamous epithelia, hepatocytes, renal proximal tubular cells, gastric parietal cells and myoepithelial cells. Epithelial Calmodulin is found in the large majority of adenocarcinomas of most sites (50-100% in various studies; as well as neuroendocrine tumours, including small cell carcinoma. Renal cell carcinoma and hepatocellular carcinoma stain in about 30% of the cases. Calmodulin mediates the control of a large number of enzymes and other proteins by Ca(2+). Among the enzymes to be stimulated by the calmodulin Ca(2+) complex are a number of protein kinases and phosphatases. Calmodulin has four functional calcium binding sites.</p> <p>Subunit: Interacts with MYO1C and RRAD. Interacts with MYO10 (By similarity). Interacts with CEP97, CEP110, TTN/titin and SRY. Interacts with USP6; the interaction is calcium dependent. Interacts with CDK5RAP2. Interacts with SCN5A. Interacts with RYR1 and RYR2.</p> <p>Subcellular Location: Cytoplasm, cytoskeleton, spindle. Cytoplasm, cytoskeleton, spindle pole. Note=Distributed throughout the cell during interphase, but during mitosis becomes dramatically localized to the spindle poles and the spindle microtubules.</p> <p>Post-translational modifications: Ubiquitination results in a strongly decreased activity. Phosphorylation results in a decreased activity.</p> <p>Similarity: Belongs to the calmodulin family. Contains 4 EF-hand domains.</p> <p>SWISS: P0DP23</p> <p>Gene ID: 801</p> <p>Database links: Entrez Gene: 801Human Entrez Gene: 12313Mouse</p>

[Entrez Gene: 24242](#)Rat

[SwissProt: P0DP23](#)Human

[SwissProt: P0DP26](#)Mouse

[SwissProt: P0DP29](#)Rat

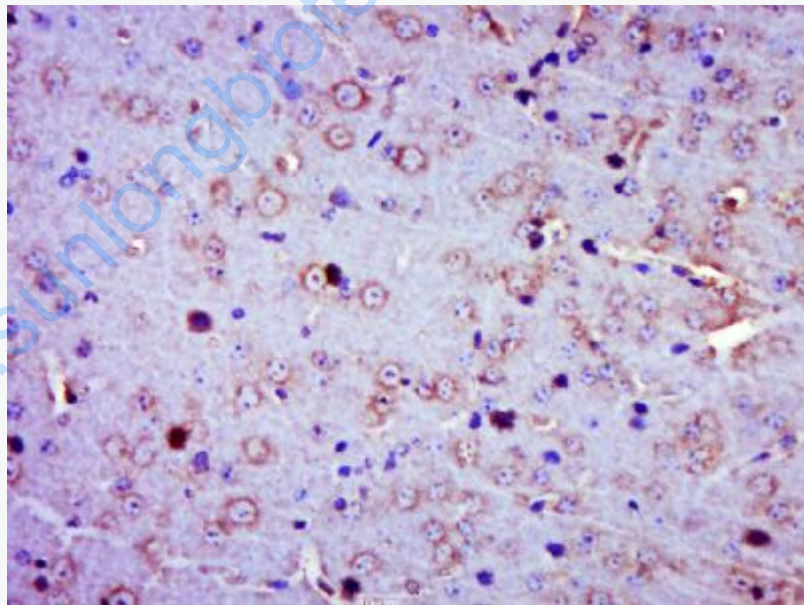
Important Note:

This product as supplied is intended for research use only, not for use in human, therapeutic or diagnostic applications.

钙离子调节素 (calmodulin, CaM):

钙调蛋白 (CaM), 是由一条多肽链组成的单体蛋白。可结合4个Ca²⁺, 胞浆Ca²⁺浓度≥10-2mmol/L时, Ca²⁺与CaM结合, 构象改变而激活Ca²⁺-CaM激酶。

Picture:



Paraformaldehyde-fixed, paraffin embedded (Mouse brain); Antigen retrieval by boiling in sodium citrate buffer (pH6.0) for 15min; Block endogenous peroxidase by 3% hydrogen peroxide for 20 minutes; Blocking buffer (normal goat serum) at 37°C for 30min; Antibody incubation with (phospho-CaM I (Ser 102)) Polyclonal Antibody, Unconjugated (SL8519R) at 1:500 overnight at 4°C, followed by a

	conjugated secondary (sp-0023) for 20 minutes and DAB staining.
--	---

www.sunlongbiotech.com