



Rabbit Anti-EP4 antibody

SL8538R

Product Name:	EP4
Chinese Name:	前列腺素E受体蛋白4抗体
Alias:	Prostaglandin E Receptor EP4; EP 4; EP4; EP-4; EP4R; MGC126583; PE2R4_HUMAN; PGE receptor EP4 subtype; PGE2 receptor EP4 subtype; Prostaglandin E receptor 4; Prostaglandin E receptor 4 subtype EP4; Prostaglandin E2 receptor; Prostaglandin E2 receptor EP4 subtype; Prostanoid EP4 receptor; PTGER 2; PTGER 4; PTGER2; PTGER4.
文献引用 PubMed :	<p>Specific References(2) SL8538R has been referenced in 2 publications.</p> <p>[IF=4.50]Koyama, Hiroyuki, et al. "Comprehensive Profiling of GPCR Expression in Ghrelin-producing Cells." Endocrinology (2016): en-2016.IHC-P;Mouse. PubMed:26671185</p> <p>[IF=2.38]Hu, Ruiqi, et al. "The expression of prostaglandin-E2 and its receptor in the oviduct of Chinese brown frog (Rana dybowskii)." Prostaglandins & Other Lipid Mediators (2016).IHC-P;Others. PubMed:27246901</p>
Organism Species:	Rabbit
Clonality:	Polyclonal
React Species:	Human,Bee,
Applications:	WB=1:500-2000ELISA=1:500-1000IHC-P=1:400-800IHC-F=1:400-800Flow-Cyt=1µg/TestICC=1:100-500IF=1:50-200 (Paraffin sections need antigen repair) not yet tested in other applications. optimal dilutions/concentrations should be determined by the end user.
Molecular weight:	53kDa
Cellular localization:	The cell membrane
Form:	Lyophilized or Liquid
Concentration:	1mg/ml

immunogen:	KLH conjugated synthetic peptide derived from human EP4R/Prostaglandin E Receptor EP4:151-250/488<Extracellular>
Lsotype:	IgG
Purification:	affinity purified by Protein A
Storage Buffer:	0.01M TBS(pH7.4) with 1% BSA, 0.03% Proclin300 and 50% Glycerol.
Storage:	Store at -20 °C for one year. Avoid repeated freeze/thaw cycles. The lyophilized antibody is stable at room temperature for at least one month and for greater than a year when kept at -20°C. When reconstituted in sterile pH 7.4 0.01M PBS or diluent of antibody the antibody is stable for at least two weeks at 2-4 °C.
PubMed:	PubMed
Product Detail:	<p>Receptor for prostaglandin E2 (PGE2). The activity of this receptor is mediated by G(s) proteins that stimulate adenylate cyclase. Has a relaxing effect on smooth muscle. May play an important role in regulating renal hemodynamics, intestinal epithelial transport, adrenal aldosterone secretion, and uterine function.</p> <p>Function: Receptor for prostaglandin E2 (PGE2). The activity of this receptor is mediated by G(s) proteins that stimulate adenylate cyclase. Has a relaxing effect on smooth muscle. May play an important role in regulating renal hemodynamics, intestinal epithelial transport, adrenal aldosterone secretion, and uterine function.</p> <p>Subunit: Interacts with FEM1A.</p> <p>Subcellular Location: Cell membrane.</p> <p>Tissue Specificity: High in intestine and in peripheral blood mononuclear cells; low in lung, kidney, thymus, uterus, vasculature and brain. Not found in liver, heart, retina or skeletal muscle.</p> <p>Post-translational modifications: Phosphorylation mediates agonist-mediated desensitization by promoting cytoplasmic retention.</p> <p>Similarity: Belongs to the G-protein coupled receptor 1 family.</p> <p>SWISS: P35408</p> <p>Gene ID: 5734</p> <p>Database links:</p>

[Entrez Gene: 5734](#)Human

[Entrez Gene: 19219](#)Mouse

[Entrez Gene: 84023](#)Rat

[Entrez Gene: 443222](#)Sheep

[Omim: 601586](#)Human

[SwissProt: P35408](#)Human

[SwissProt: P32240](#)Mouse

[SwissProt: P43114](#)Rat

[Unigene: 199248](#)Human

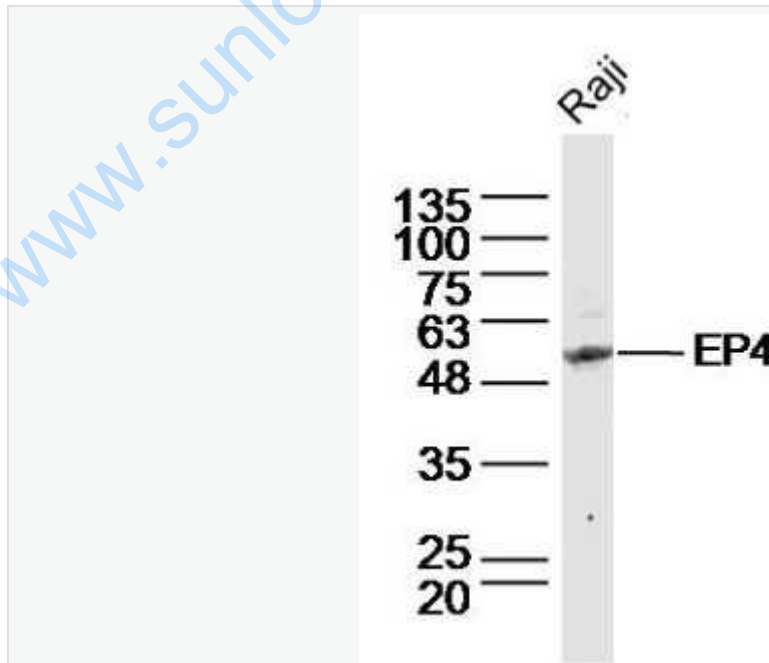
[Unigene: 18509](#)Mouse

[Unigene: 16062](#)Rat

Important Note:

This product as supplied is intended for research use only, not for use in human, therapeutic or diagnostic applications.

Picture:



Sample:

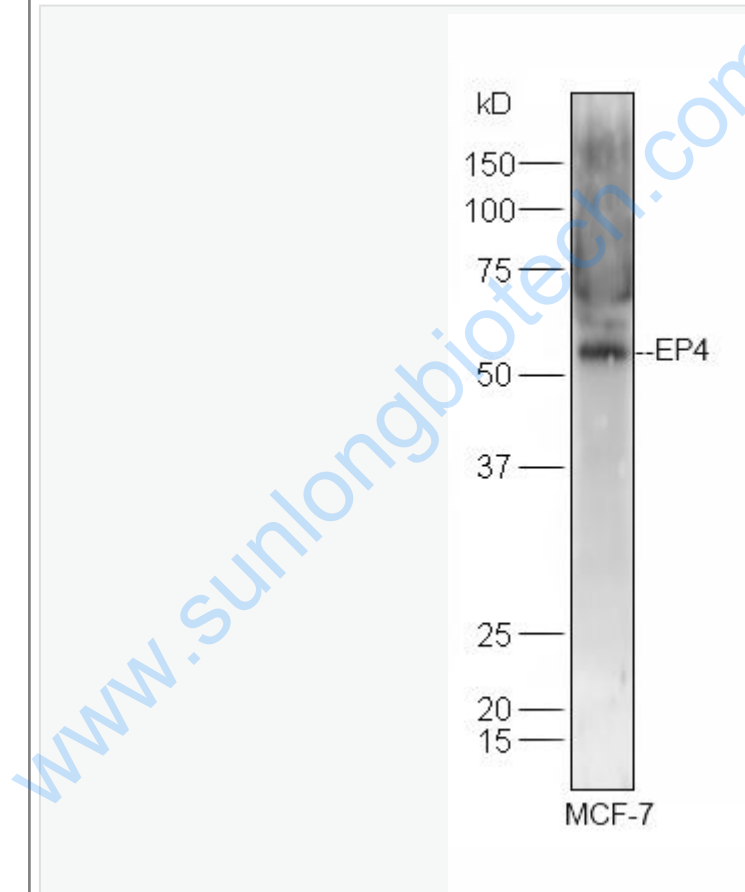
Raji(Human) Cell Lysate at 30 ug

Primary: Anti-EP4? (SL8538R) at 1/300 dilution

Secondary: IRDye800CW Goat Anti-Rabbit IgG at 1/20000 dilution

Predicted band size: 53 kD

Observed band size: 53 kD



Sample:

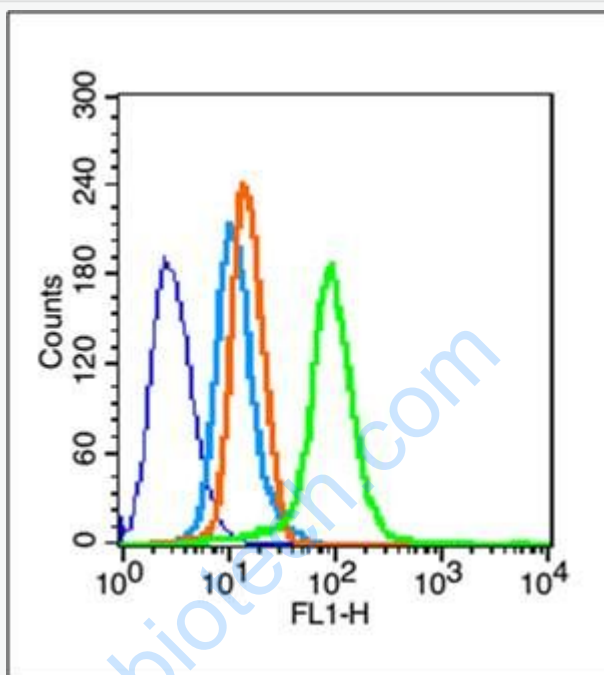
MCF-7 Cell (Human) Lysate at 30 ug

Primary: Anti-EP4 (SL8538R) at 1/300 dilution

Secondary: IRDye800CW Goat Anti-Rabbit IgG at 1/20000 dilution

Predicted band size: 53 kD

Observed band size: 53 kD



Blank control (blue line): HeLa (fixed with 70% methanol (Overnight at -20°C) and then permeabilized with ice-cold 90% methanol for 30 min on ice).

Primary Antibody (green line): Rabbit Anti-EP4 antibody (SL8538R), Dilution: 1 μg / 10⁶ cells;

Isotype Control Antibody (orange line): Rabbit IgG .

Secondary Antibody (white blue line): Goat anti-rabbit IgG-FITC, Dilution: 1 μg / test.